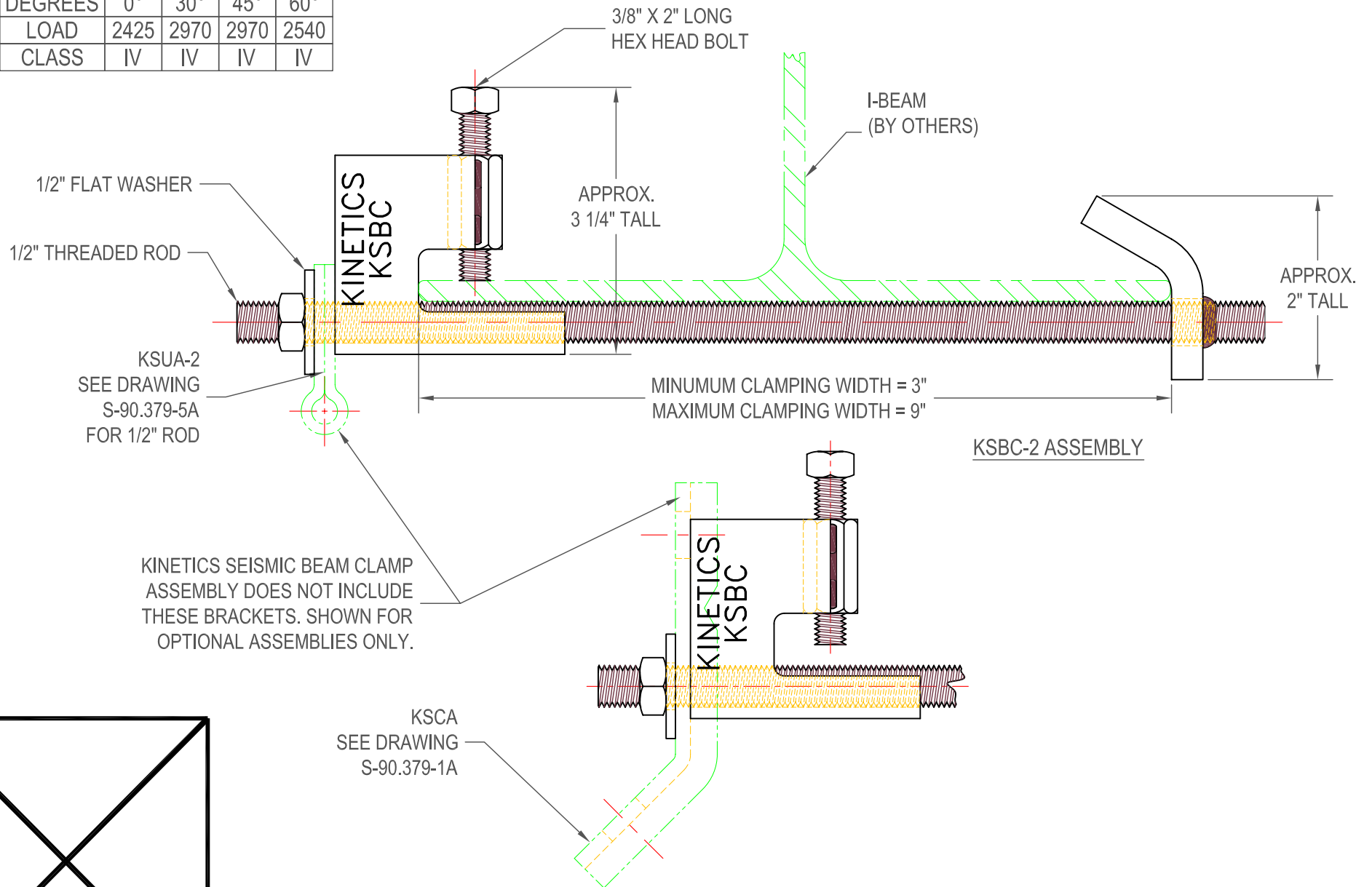


CAPACITY @ DEGREES FROM HORIZONTAL

DEGREES	0°	30°	45°	60°
LOAD	2425	2970	2970	2540
CLASS	IV	IV	IV	IV



THIS COMPONENT IS SUITABLE FOR SEISMIC APPLICATIONS SUBJECT TO THE QUALIFICATIONS INDICATED ON THIS DRAWING

	TITLE	DATE	REVISED BY	DRAWING NO.
	KSBC-2 (1/2" ROD) SEISMIC BEAM CLAMP	07/20/05	BB	S-90.550-1B