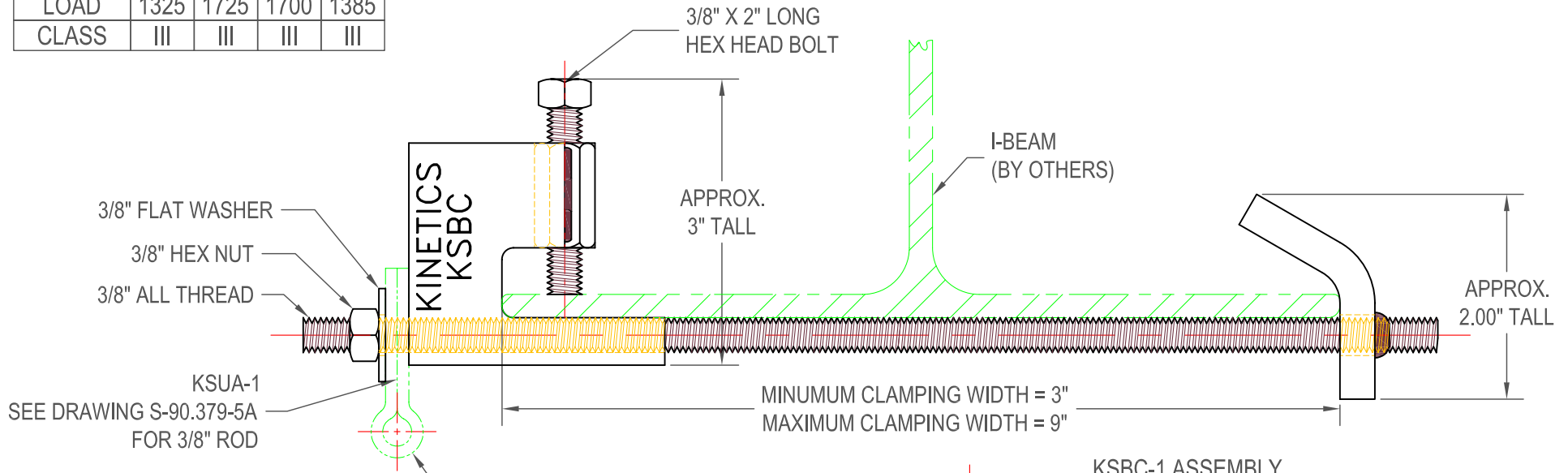


CAPACITY @ DEGREES FROM HORIZONTAL

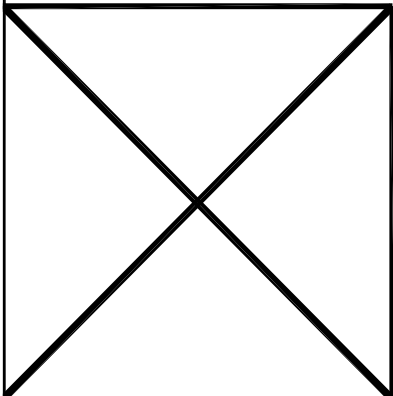
DEGREES	0°	30°	45°	60°
LOAD	1325	1725	1700	1385
CLASS	III	III	III	III



KINETICS SEISMIC BEAM CLAMP ASSEMBLY DOES NOT INCLUDE THESE BRACKETS. SHOWN FOR OPTIONAL ASSEMBLIES ONLY.

KSCA
SEE DRAWING S-90.379-1A

THIS COMPONENT IS SUITABLE FOR SEISMIC APPLICATIONS SUBJECT TO THE QUALIFICATIONS INDICATED ON THIS DRAWING



	TITLE	DATE	REVISED BY	DRAWING NO.
	KSBC-1 (3/8" ROD) SEISMIC BEAM CLAMP	07/20/05	BB	S-90.550-1A