

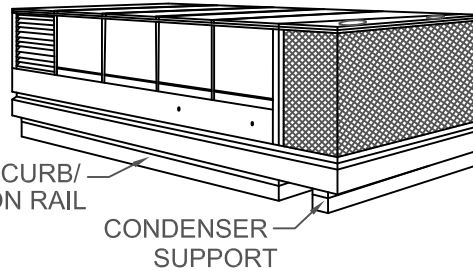
NOTE:

MODEL ESR TO PROVIDE CONTINUOUS SUPPORT OF UNIT WEIGHT WITH 4" TOP RAIL.

RESTRAINT AND ATTACHMENT DATA

RESTRAINT PEDESTALS ARE DESIGNED FOR 3000 LB LATERAL WIND OR SEISMIC LOADING. TO ACHIEVE FULL RATING, WELD EACH ESR PEDESTAL TO STRUCTURAL STEEL IN 3 PLACES (MIN.) AS NOTED. 1) A 6"x 0.25" WELD CENTERED ON THE OUTSIDE EDGE OF EACH PEDESTAL BASEPLATE. 2) & 3) TWO 6"x 0.25" WELDS WRAPPED AROUND EACH CORNER AT THE ENDS OF THE INSIDE EDGE WITH 3" OF WELD ON EACH END AND 3" ALONG THE INSIDE EDGE. A LESSER CAPACITY CAN ALSO BE ACHIEVED IF BOLTED TO STRUCTURAL STEEL USING 5/8" HARDWARE.

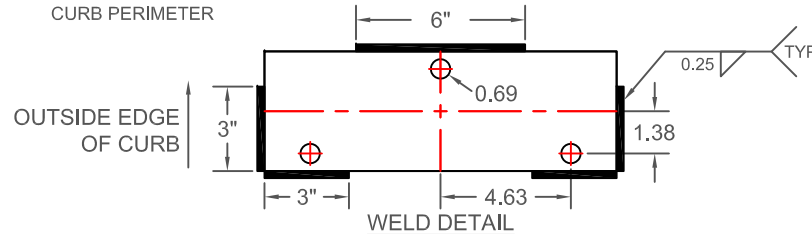
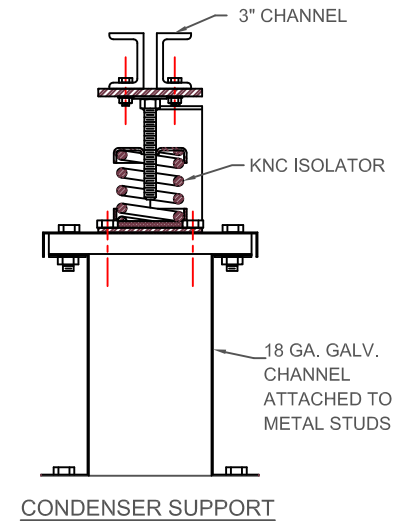
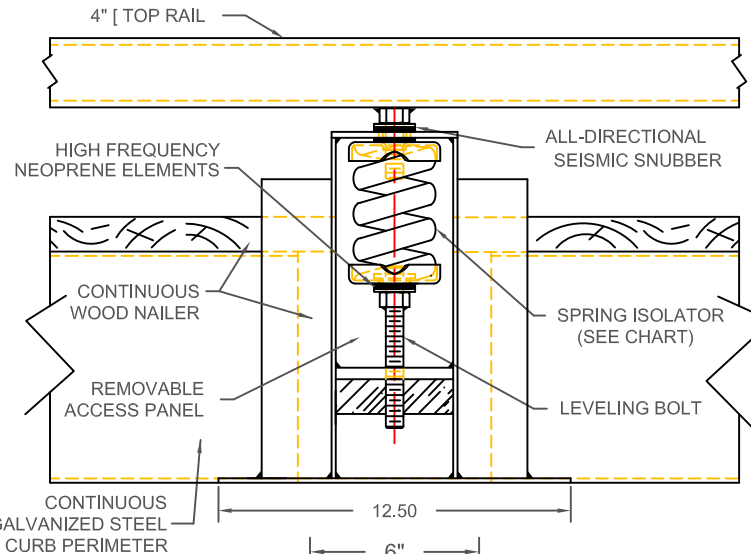
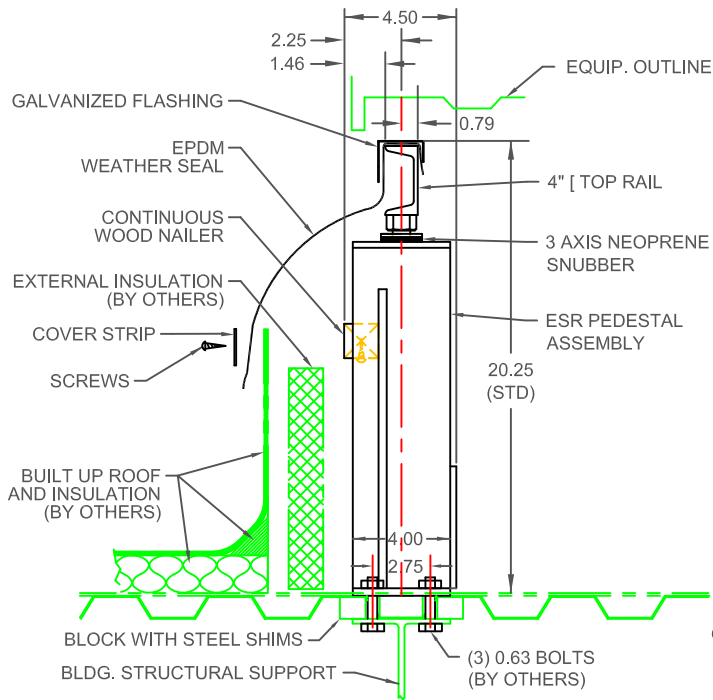
ROOFTOP EQUIPMENT



ROOF CURB/
ISOLATION RAIL

CONDENSER
SUPPORT

MODEL	SPRING CAPACITY (PER PEDESTAL) BY MODEL					
	RATED		SPRING			
	LOAD lb/kg	DEFL in/mm	FR. HT. in/mm	O.D. in/mm	COLOR	
				OUTER	INNER	
ESR-1-50	50/23	1.00/25	4.20/107	3.00/76	BEIGE	
ESR-1-100	100/45	1.00/25	4.20/107	3.00/76	CHROME	
ESR-1-250	250/113	1.79/45	4.20/107	3.00/76	BLUE	
ESR-1-450	450/204	1.54/39	4.20/107	3.00/76	GREEN	
ESR-1-625	625/283	1.44/37	4.20/107	3.00/76	BLACK	
ESR-1-800	800/363	1.31/33	4.20/107	3.00/76	GRAY	
ESR-1-1000	1000/454	1.15/29	4.20/107	3.00/76	RED	
ESR-1-1250	1250/567	1.09/28	4.20/107	3.00/76	BROWN	
ESR-1-1700	1700/771	0.95/24	4.20/107	3.00/76	ORANGE	
ESR-1-2200	2200/998	1.00/26	4.20/107	3.00/76	ORANGE	GRAY
ESR-1-2465	2465/1118	1.00/25	4.20/107	3.00/76	BLUE	
ESR-1-2865	2865/1300	1.00/25	4.20/107	3.00/76	BLUE	GRAY
ESR-1-3500	3500/1588	1.00/25	4.20/107	3.00/76	BLUE	BROWN



- SPRING ISOLATORS ARE COMPUTER SELECTED AND LOCATED TO NOMINALLY PROVIDE THE RATED STATIC DEFLECTION.
- SPRING ISOLATORS HAVE A MINIMUM K_x/K_y OF 1.2.
- SPRING ISOLATORS HAVE A TYPICAL OVERLOAD CAPACITY OF 50%.
- SPRING ISOLATORS ARE SAFE AT SOLID LOADING.
- SPRING ISOLATORS ARE POWDER COATED.



TITLE
ESR-1 ISOLATION CURB W/
CONDENSER SUPPORT

LAST DATE
REVISED
06/10/09

REVISED BY
BB

DRAWING NO.
S-89.102-1A