

# SPRING DATA

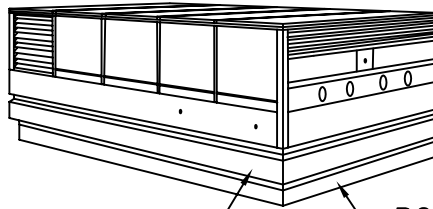
SPRING ISOLATORS ARE COMPUTER SELECTED AND LOCATED TO PROVIDE A NOMINAL 2 INCH (50 mm) STATIC DEFLECTION.

SPRING ISOLATORS HAVE A MINIMUM  $K_x/K_y$  OF 1.0

SPRING ISOLATORS ARE SAFE AT SOLID LOADING

SPRING ISOLATORS ARE PAINTED.

## ROOFTOP EQUIPMENT



ISOLATION RAIL      ROOF CURB

RATED LOAD LB/KG	RATED DEFL. IN/mm	SPRING FR. HT. IN/mm	SPRING O. D. IN/mm	COLOR CODE
30/14	2.00/50	3.75/95	1.46/37	GRAY
65/30	2.00/50	3.75/95	1.46/37	BLUE
120/55	2.00/50	3.75/95	1.46/37	GREEN
205/93	2.00/50	3.75/95	1.46/37	BLACK

### SPECIAL NOTE:

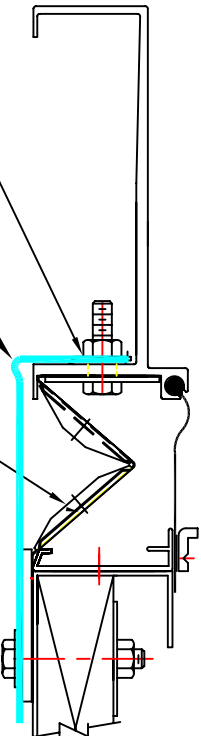
ALL UNITS SUPPLIED WITH A TROUBLE SHOOTING PACKAGE FOR LEVELING EQUIPMENT, IF REQUIRED, DURING INSTALLATION.

PRE PUNCHED BOLTING HOLES IN TOP EXTRUSION FOR HARDWARE SUPPLIED BY KNC

KSR NEOP. VERTICAL RESTRAINT (OPT - AS REQ'D)

WIND/SEISMIC RESTRAINT BRACKET QUANTITY AND LOCATION DETERMINED BY KNC PER ORDER

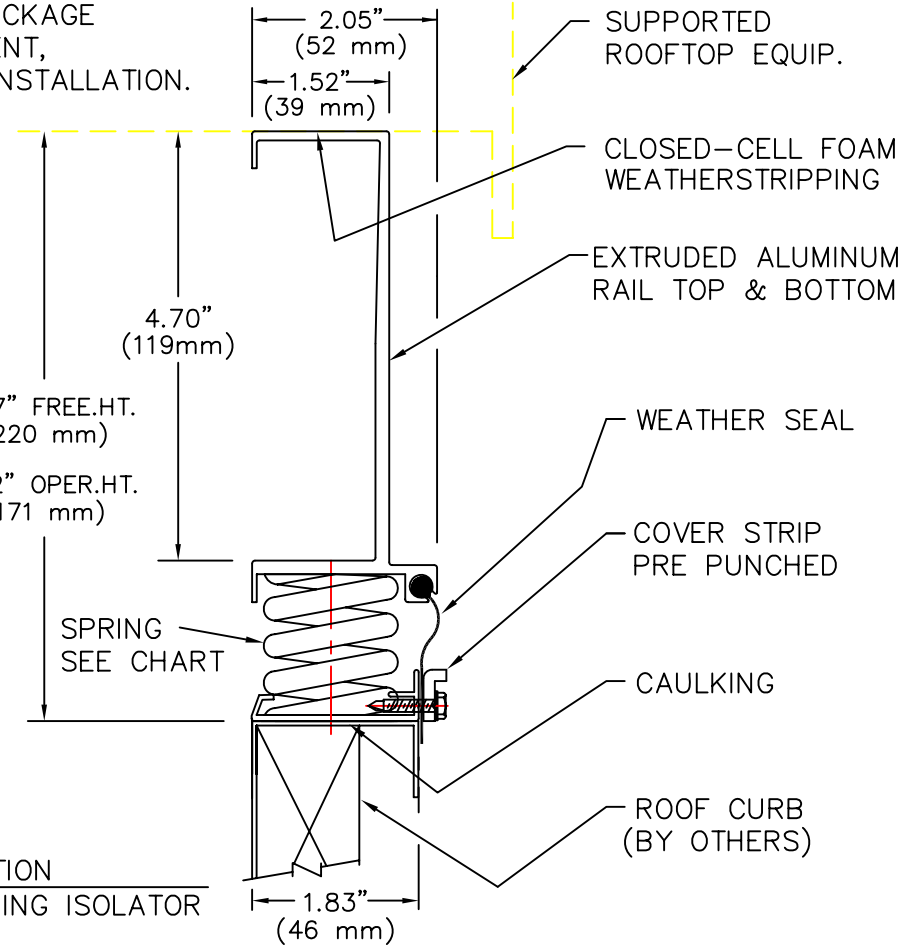
HARDWARE BY KNC



### TYPICAL SECTION

SHOWING WIND/SEISMIC LATERAL & VERTICAL RESTRAINT

NOTE:  
IF SEISMIC APPLICATION IS REQUIRED CONSULT SALES REPRESENTATIVE.



### TYPICAL SECTION

SHOWING SPRING ISOLATOR



TITLE      MODEL KSR-2  
ISOLATION RAIL

LAST DATE REVISED  
1/5/99

DRAWN BY  
DW

DRAWING NO.      S-DWG  
S-88.450