

SPRING DATA

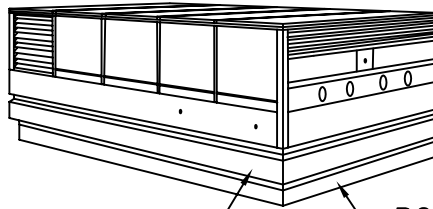
SPRING ISOLATORS ARE COMPUTER SELECTED AND LOCATED TO PROVIDE A NOMINAL 2 INCH (50 mm) STATIC DEFLECTION.

SPRING ISOLATORS HAVE A MINIMUM K_x/K_y OF 1.0

SPRING ISOLATORS ARE SAFE AT SOLID LOADING

SPRING ISOLATORS ARE PAINTED.

ROOFTOP EQUIPMENT



ISOLATION RAIL ROOF CURB

RATED LOAD LB/KG	RATED DEFL. IN/mm	SPRING FR. HT. IN/mm	SPRING O. D. IN/mm	COLOR CODE
30/14	2.00/50	3.75/95	1.46/37	GRAY
65/30	2.00/50	3.75/95	1.46/37	BLUE
120/55	2.00/50	3.75/95	1.46/37	GREEN
205/93	2.00/50	3.75/95	1.46/37	BLACK

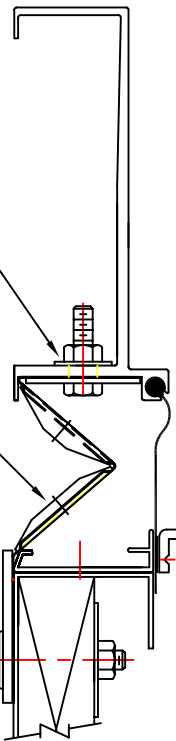
SPECIAL NOTE:

ALL UNITS SUPPLIED WITH A TROUBLE SHOOTING PACKAGE FOR LEVELING EQUIPMENT, IF REQUIRED, DURING INSTALLATION.

PRE PUNCHED BOLTING HOLES IN TOP EXTRUSION FOR HARDWARE BY KNC

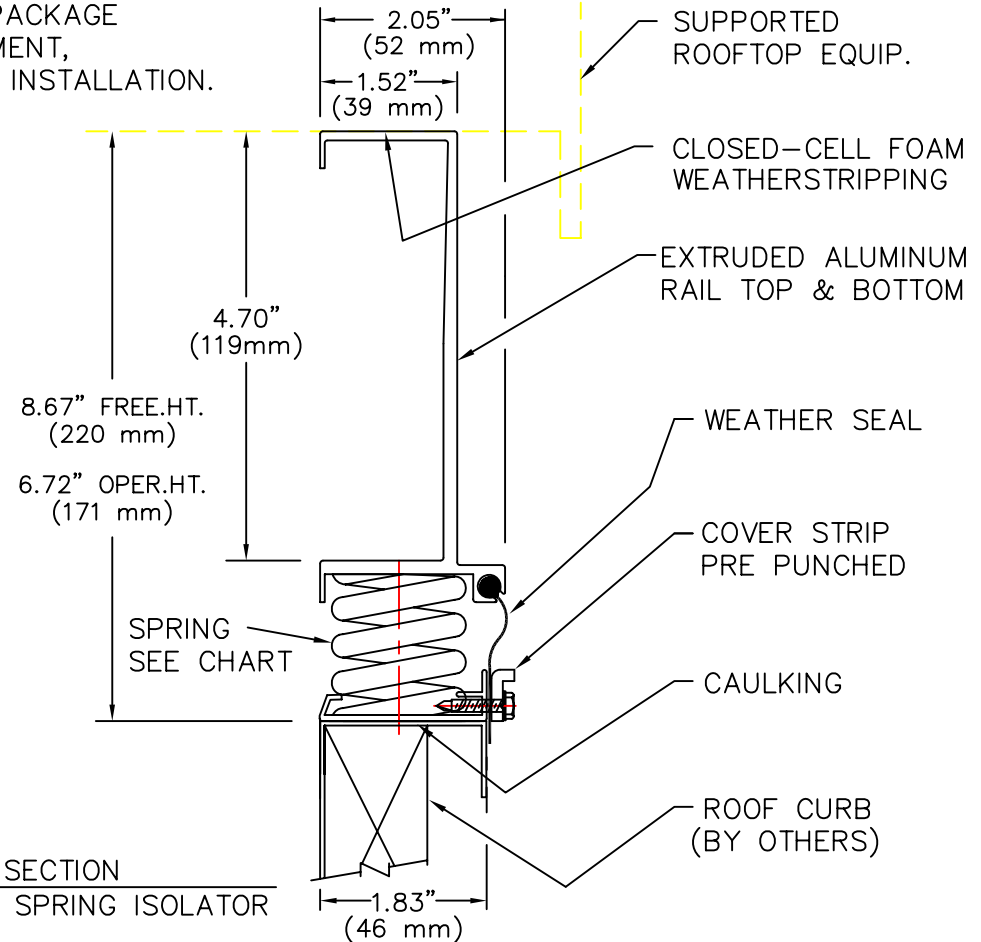
WIND/SEISMIC RESTRAINT BRACKET QUANTITY AND LOCATION PRE-DETERMINED BY KNC

HARDWARE BY KNC

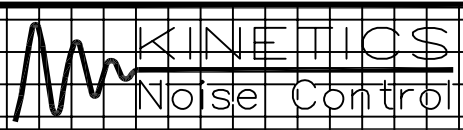


TYPICAL SECTION SHOWING WIND/SEISMIC RESTRAINT

NOTE: IF SEISMIC APPLICATION IS REQUIRED CONSULT SALES REPRESENTATIVE.



TYPICAL SECTION SHOWING SPRING ISOLATOR



TITLE MODEL KSR-2 ISOLATION RAIL

LAST DATE REVISED 1/5/99

DRAWN BY DW

DRAWING NO. S-88.350 S-DWG