

SPRING DATA

SPRING ISOLATORS ARE COMPUTER SELECTED AND LOCATED TO PROVIDE A NOMINAL 1 INCH (25 mm) STATIC DEFLECTION.

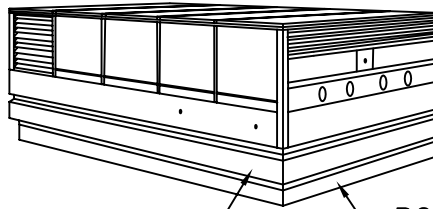
SPRING ISOLATORS HAVE A MINIMUM K_x/K_y OF 1.2

SPRING ISOLATORS HAVE A TYPICAL OVERLOAD CAPACITY OF 50%

SPRING ISOLATORS ARE SAFE AT SOLID LOADING

SPRING ISOLATORS ARE PAINTED.

ROOFTOP EQUIPMENT



ISOLATION RAIL — ROOF CURB

RATED LOAD LB/KG	RATED DEFL. IN/mm	SPRING FR. HT. IN/mm	SPRING O. D. IN/mm	COLOR CODE
30/14	1.00/25	2.50/63	1.46/37	BLUE
65/30	1.00/25	2.50/63	1.46/37	GREEN
120/55	1.00/25	2.50/63	1.46/37	GRAY
205/93	1.00/25	2.50/63	1.46/37	BROWN

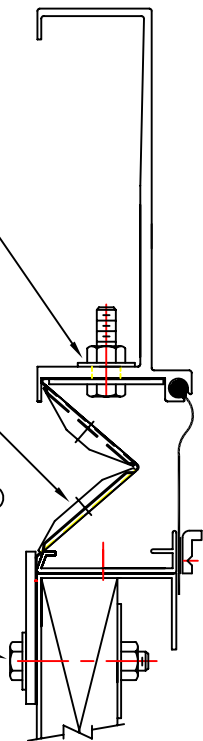
SPECIAL NOTE:

ALL UNITS SUPPLIED WITH A TROUBLE SHOOTING PACKAGE FOR LEVELING EQUIPMENT, IF REQUIRED, DURING INSTALLATION.

PRE PUNCHED BOLTING HOLES IN TOP EXTRUSION FOR HARDWARE BY KNC

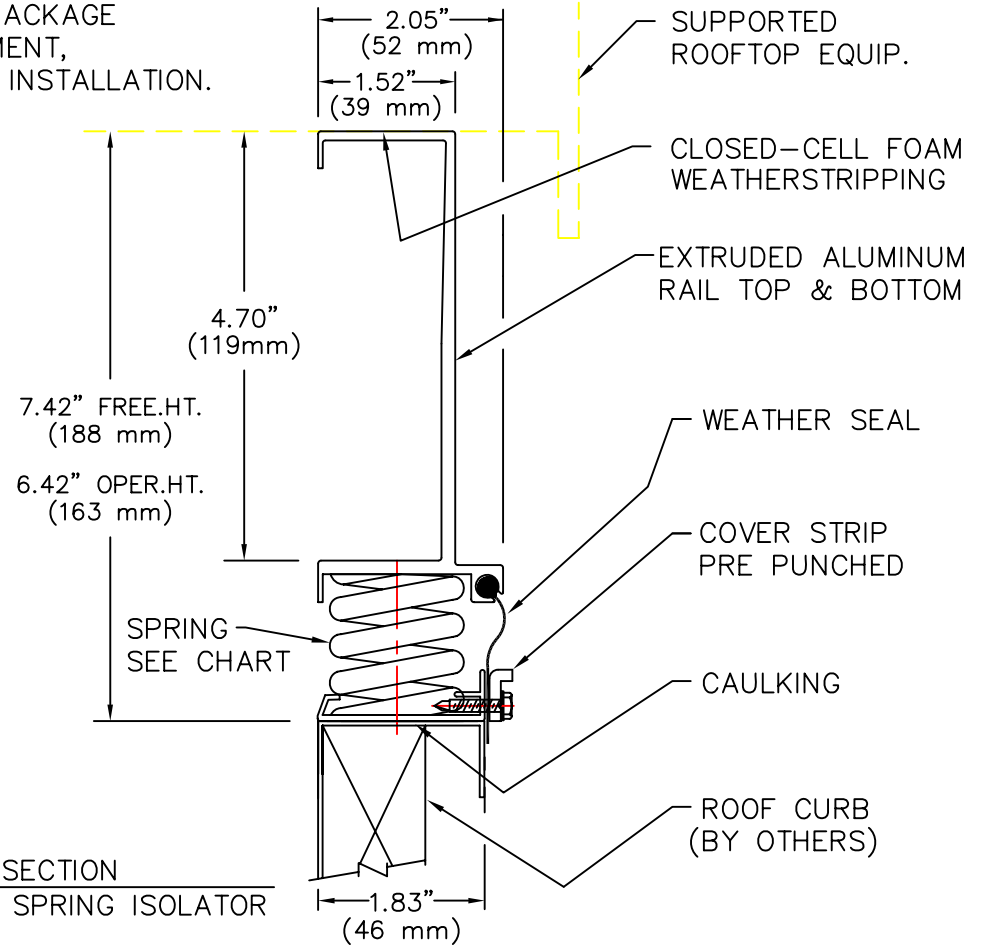
WIND/SEISMIC RESTRAINT BRACKET QUANTITY AND LOCATION PRE-DETERMINED BY KNC

HARDWARE BY KNC



TYPICAL SECTION SHOWING WIND/SEISMIC RESTRAINT

NOTE:
IF SEISMIC APPLICATION IS REQUIRED CONSULT SALES REPRESENTATIVE.



TYPICAL SECTION SHOWING SPRING ISOLATOR



TITLE MODEL KSR-1 ISOLATION RAIL

LAST DATE REVISED 4/17/96

DRAWN BY DW

DRAWING NO. S-88.300 S-DWG