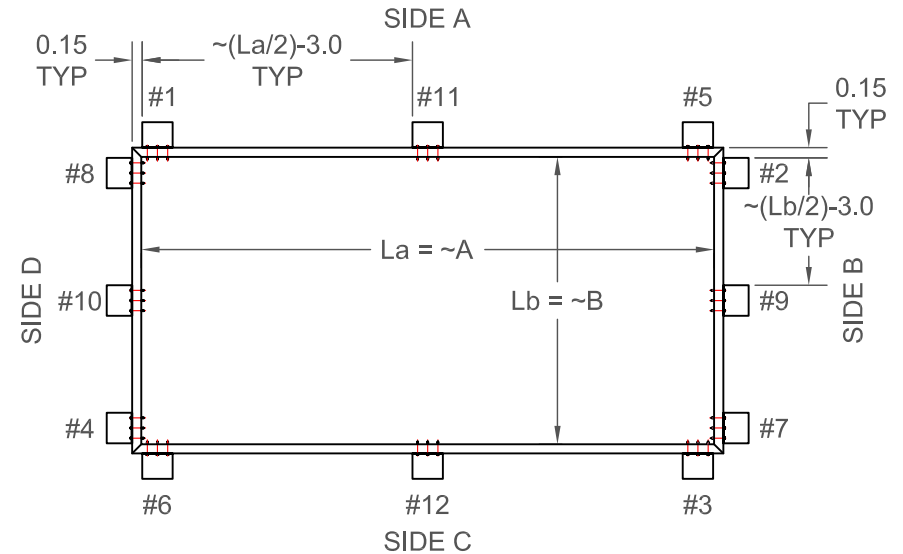


KSCM-1 BRACKET DETAIL



KSCM-1 BRACKET LOCATION

NOTES:

- 1.) EACH KSCM-1, KINETICS SEISMIC CURB ATTACHMENT BRACKET KIT IS APPROX. EQUIVALENT TO ONE (1) 1/4-20 SAE GRADE 2 BOLT IN SHEAR. **HORIZONTAL RESTRAINT CAPACITY = 625 LBS.**
- 2.) AT LEAST ONE (1) KSCM-1 KIT IS REQUIRED FOR EACH SIDE OF THE CURB (#1 - #4). ADDITIONAL KSCM-1 RESTRAINT BRACKETS MAY BE REQUIRED AS INDICATED BY A KINETICS SEISMIC CERTIFICATION.
- 3.) ADDITIONAL KSCM-1 RESTRAINT BRACKETS ARE TO BE ADDED IN PAIRS (No. 5) & (No. 6); (No. 7) & (No. 8); (No. 9) & (No. 10); AND (No. 11) & (No. 12) AS SHOWN IN THE FIGURE ABOVE.
- 4.) ATTACHMENT TO THE CURB IS BY THREE (3) No. 12-14 X 2.50 SELF DRILLING TEK SCREWS PER BRACKET.
- 5.) ATTACHMENT TO EQUIPMENT MAY BE BY WELD OR THREE (3) No. 12-14 X 0.75 SELF DRILLING TEK SCREWS. SEE DRAWING INS-88.071-18B DETAILS.
- 6.) REF. DWG.S 88.071-18, INS-88.071-18A AND INS-88.071-18B.



TITLE  
**KSCM-1  
 SEISMIC BRACKET KIT  
 CURB MOUNTED EQUIPMENT**

LAST DATE  
 REVISED  
**08/30/04**

REVISED BY  
**BB**

DRAWING NO.  
**S-88.071-18A**