

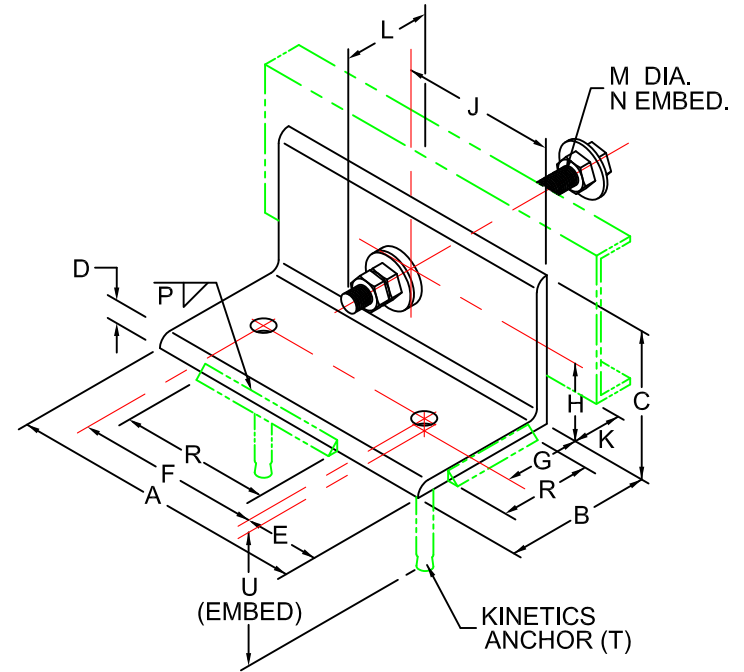
HS-5 SEISMIC RESTRAINT I-P UNITS (INCHES & POUNDS)

MODEL	DIMENSION												
	A	B	C	D	E	F	G	H	J	K	L	M	N
HS-5-01	6.00	6.00	6.00	0.38	1.00	4.00	1.50	3.00	3.00	0.50	3.00	0.50	2.50
HS-5-02	7.00	6.00	6.00	0.38	1.00	5.00	1.50	3.00	3.50	0.50	3.00	0.75	3.50
HS-5-03	9.00	6.00	6.00	0.50	1.00	7.00	1.75	3.00	4.50	0.50	3.50	0.88	4.00
HS-5-04	11.50	6.00	6.00	0.50	1.00	9.50	2.00	3.00	5.75	0.50	4.00	1.25	4.75
HS-5-05	15.00	8.00	6.00	0.50	1.50	12.00	2.00	3.00	7.50	0.50	4.25	1.25	6.00
HS-5-05A	15.00	8.00	6.00	0.50	1.50	12.00	2.00	3.00	7.50	0.50	4.25	1.25	9.00

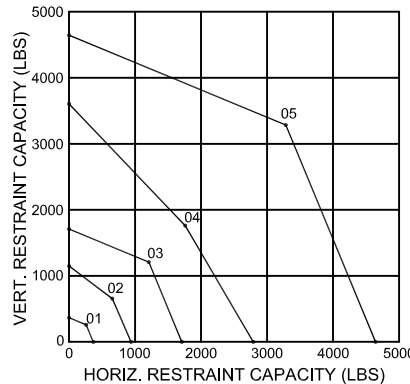
OPTIONAL WELD		
MODEL	DIMENSION	
	P	R
HS-5-01	0.13	2.00
HS-5-02	0.13	2.00
HS-5-03	0.25	2.75
HS-5-04	0.25	5.00
HS-5-05	0.25	5.00
HS-5-05A	0.25	6.00

OPTIONAL ANCHOR				
MODEL	KCAB		KCCAB	
	DIMENSION		DIMENSION	
	T	U (MIN.)	T	U (MIN.)
HS-5-01	0.38	3.00	0.38	2.00
HS-5-02	0.50	4.00	0.50	3.25
HS-5-03	0.63	5.00	0.63	4.00
HS-5-04	0.88	6.00	0.75	4.75
*HS-5-05	1.00	8.00	0.75	4.75
HS-5-05A	1.00	9.00		

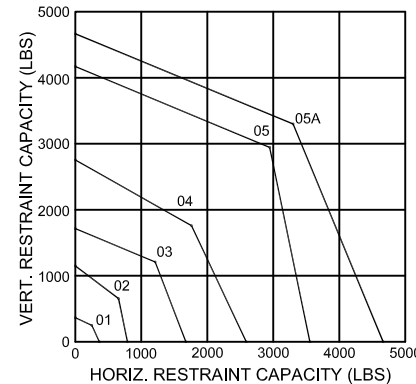
* REQUIRES KINETICS MODEL TG-75 BOLT ISOLATION GROMMET FOR USE WITH KCCAB ANCHOR.



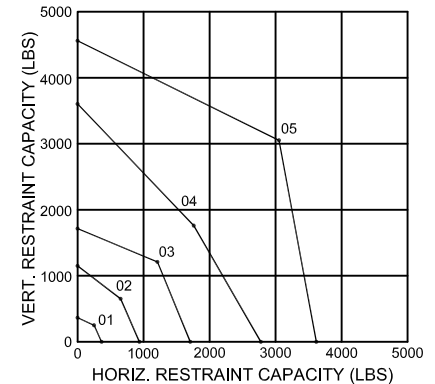
BOLTED OR WELDED TO STEEL



ATTACHED TO CONCRETE WITH KCAB ANCHOR



ATTACHED TO CONCRETE WITH KCCAB ANCHOR



COMPUTED HORIZONTAL AND VERTICAL SEISMIC LOAD COMBINATIONS MUST FALL WITHIN THE RESTRAINT CAPACITY ENVELOPE.

SPECIFICATIONS:

- FINISH: HOT DIPPED GALVANIZED.
- OPERATING CLEARANCE IS APPROXIMATELY 0.25 INCHES IN ALL DIRECTIONS.
- CAPACITIES LISTED ARE BASED ON EQUAL, SIMULTANEOUSLY APPLIED, VERTICAL AND HORIZONTAL LOADS.
- HORIZONTAL LOADS CAN BE APPLIED ON EITHER AXIS.
- CAPACITIES FOR INDIVIDUALLY APPLIED LOADS ARE HIGHER, CONSULT KINETICS FOR DETAILS.
- CAPACITIES ASSUME THE USE OF THE INDICATED ANCHORS EMBEDDED AT THEIR APPROVED EMBEDMENT DEPTH IN 3000 PSI CONCRETE (NO SPECIAL INSPECTION IS REQUIRED).



KINETICS NOISE CONTROL, INC
 6300 IRELAN PL.,
 DUBLIN, OH 43017 USA
 Ph: 614 889-0480, Fax: 614 889-0540
 www.kineticsnoise.com

Model:
**HS-5
 RESTRAINT**

By: PWM
 Date: 03/29/99
 Revised: 09/15/10 / BB

Drawing No:
S-04.80-1A