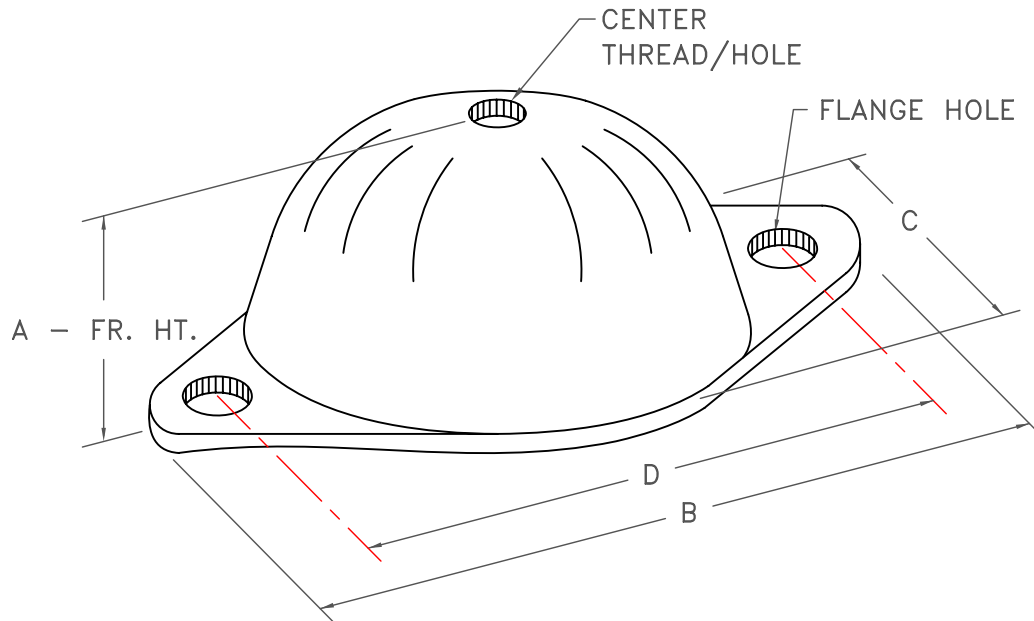


		RATED				DIMENSION								CENTER				FLANGE	
		LOAD		DEFL.		A		B		C		D		NC THREAD		HOLE DIA.		HOLE DIA.	
MODEL	DURO	LB	KG	IN	MM	IN	MM	IN	MM	IN	MM	IN	MM	IN	MM	IN	MM	IN	MM
RQ- 210 A	30A	210	95	0.10	3	1.12	28	3.75	95	2.27	58	3.00	76	0.38	10			0.34	9
RQ- 370 A	40A	370	168	0.10	3	1.12	28	3.75	95	2.27	58	3.00	76	0.38	10			0.34	9
RQ- 520 A	50A	520	236	0.10	3	1.12	28	3.75	95	2.27	58	3.00	76	0.38	10			0.34	9
RQ- 680 A	60A	680	308	0.10	3	1.12	28	3.75	95	2.27	58	3.00	76	0.38	10			0.34	9
RQ- 750 A	70A	750	340	0.08	2	1.12	28	3.75	95	2.27	58	3.00	76	0.38	10			0.34	9
RQ- 375 B	40A	375	170	0.13	3	1.66	42	5.38	137	3.25	83	4.12	105			0.50	13	0.53	13
RQ- 800 B	50A	800	363	0.13	3	1.66	42	5.38	137	3.25	83	4.12	105			0.50	13	0.53	13
RQ- 925 B	60A	925	420	0.13	3	1.66	42	5.38	137	3.25	83	4.12	105			0.50	13	0.53	13
RQ- 1425 B	70A	1425	646	0.13	3	1.66	42	5.38	137	3.25	83	4.12	105			0.50	13	0.53	13
RQ- 525 C	40A	525	238	0.13	3	1.66	42	6.25	159	3.94	100	5.00	127			0.75	19	0.53	13
RQ- 1000 C	50A	1000	454	0.13	3	1.66	42	6.25	159	3.94	100	5.00	127			0.75	19	0.53	13
RQ- 1250 C	60A	1250	567	0.13	3	1.66	42	6.25	159	3.94	100	5.00	127			0.75	19	0.53	13
RQ- 1950 C	70A	1950	885	0.13	3	1.66	42	6.25	159	3.94	100	5.00	127			0.75	19	0.53	13



RQ MOUNTS ARE MADE OF OIL RESISTANT NEOPRENE.
RQ MOUNTS ARE BLACK IN COLOR.
RQ MOUNTS HAVE A TEMPERATURE RANGE OF -25° TO +180°F.
RQ MOUNTS HAVE INTERLOCKING STEEL CAST INTO MOUNT.



TITLE
MODEL RQ

LAST DATE
REVISED
09/09/04

REVISED BY
BB

DRAWING NO.
S-02.05-1C

S-02