

FHS 102 mm DEFLECTION ISOLATOR

S-I UNITS (mm AND kg)

TYPE	L	W	T	A	D	E	H	Z
4-100/1600	311	178	13	21	17	89	359	16
4-2250/5450	375	254	13	24	27	127	411	22

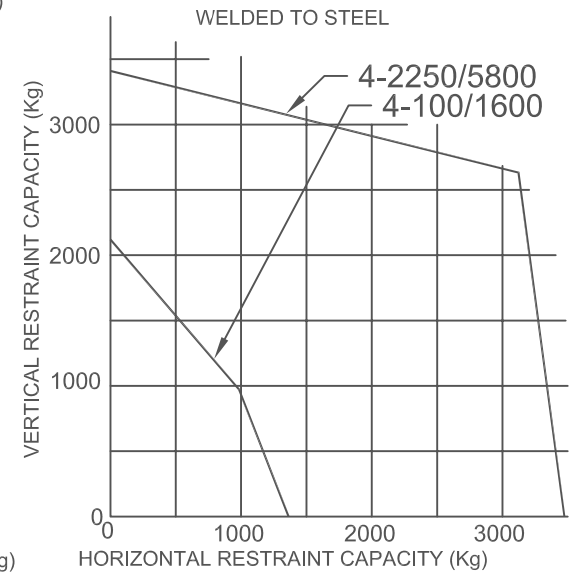
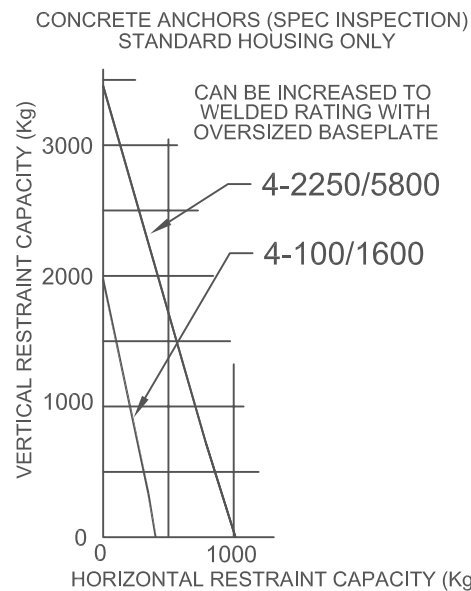
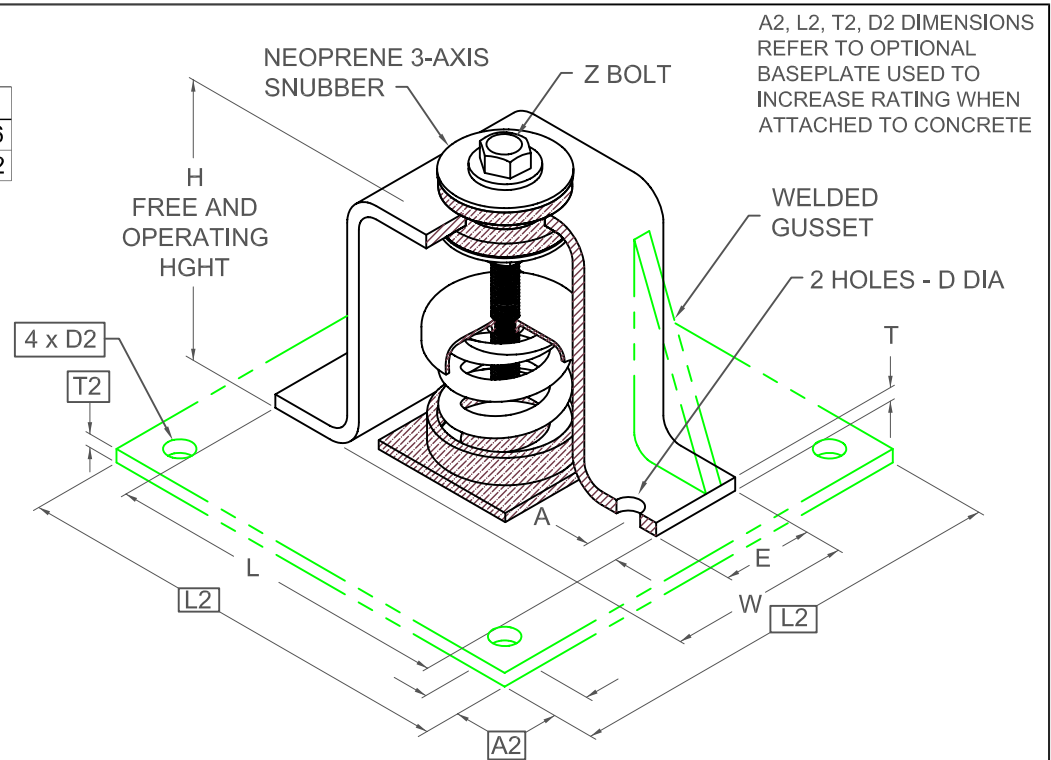
STANDARD RATINGS		SPRING COIL					
TYPE	SIZE	COLOR		FREE		RATED	
		OUTER	INNER 1	HT.	O.D.	LOAD	DEFL.
FHS	4-100	GRAY		254	143	45	102
FHS	4-250	BLUE		254	143	113	102
FHS	4-500	GREEN		254	143	227	102
FHS	4-750	BLACK		254	143	340	102
FHS	4-1000	RED		254	143	454	102
FHS	4-1250	BROWN		254	143	567	102
FHS	4-1600	ORANGE		254	143	726	102
*FHS	4-2250	BEIGE		292	203	1021	102
*FHS	4-2500	BEIGE	BLUE	292	203	1134	102
*FHS	4-2750	BEIGE	GREEN	292	203	1247	102
*FHS	4-3000	BEIGE	BLACK	292	203	1361	102
*FHS	4-3250	BEIGE	RED	292	203	1474	102
*FHS	4-3500	BEIGE	BROWN	292	203	1588	102
*FHS	4-3850	BEIGE	ORANGE	292	203	1746	102
*FHS	4-4200	CHROME		292	203	1905	102
*FHS	4-4450	CHROME	BLUE	292	203	2018	102
*FHS	4-4700	CHROME	GREEN	292	203	2132	102
*FHS	4-4950	CHROME	BLACK	292	203	2245	102
*FHS	4-5200	CHROME	RED	292	203	2359	102
*FHS	4-5450	CHROME	BROWN	292	203	2472	102
*FHS	4-5800	CHROME	ORANGE	292	203	2631	102

*INCLUDES WELDED GUSSET AS SHOWN

4-100/1600 REQUIRES 15 DIA x 101 MIN EMBED ANCHORS IN CONCRETE
 4-2250/5800 REQUIRES 24 DIA x 229 MIN EMBED ANCHORS IN CONCRETE
 (ALLOWABLE LOADS BASED ON 20700 KPA MIN CONCRETE)
 4-100/1600 ANCHOR BOLT TORQUE - 102 NM, PULL TEST - 1211 KG
 4-2250/5800 ANCHOR BOLT TORQUE - 272 NM, PULL TEST - 2408 KG

SPECIFICATIONS:

- VERTICALLY AND LATERALLY RESTRAINED SPRING ISOLATOR WITH CONSTANT FREE AND OPERATING HEIGHT AND REPLACEABLE NEOPRENE SNUBBING ELEMENTS.
- 6mm NOMINAL CLEARANCE IN SNUBBING ELEMENTS.
- MINIMUM OVERLOAD OF 50%.
- MINIMUM Kx/Ky RATIO OF 1.0.
- ALL ELEMENTS SAFE AT SOLID LOADING.
- POWDER COATED COILS AND HOT DIPPED GALVANIZED BRACKET
- OSHPD APPROVAL NUMBER R-0433



Computed horiz and vert seismic load combinations must fall within the restraint capacity envelope. Contact KNC for bolted to steel data.



KINETICS NOISE CONTROL, INC
 6300 IRELAN PL,
 DUBLIN, OH 43017 USA
 Ph: 614 889-0480, Fax: 614 889-0540
 www.kineticsnoise.com

Model:
FHS-4

By: PWM
 Date: 12/21/02
 Revised: 06/13/03 / JJ

Drawing No:
S-01.35-41(M)