

# FHS 25 mm DEFLECTION ISOLATOR

S-I UNITS (mm AND kg)

TYPE	L	W	T	A	D	E	H	Z
1-35/805	186	76	10	17	11	38	152	16
1-50/1000	242	127	10	22	21	64	192	16
1-1250/3500	242	127	10	22	21	64	192	16

STANDARD RATINGS	SPRING COIL							
	TYPE	SIZE	COLOR		FREE HT.	O.D.	RATED LOAD	DEFL.
FHS	1-35	BLUE			81	44	16	39
FHS	1-70	GREEN			81	44	32	35
FHS	1-120	GRAY			81	44	54	30
FHS	1-220	BROWN			81	44	100	27
FHS	1-370	ORANGE			81	44	168	24
FHS	1-500	BEIGE			81	44	227	25
FHS	1-600	CHROME			81	44	272	25
FHS	1-700	BEIGE	WHITE		81	44	318	25
FHS	1-805	CHROME	WHITE		81	44	365	26
FHS	1-50	BEIGE			107	76	23	25
FHS	1-100	CHROME			107	76	45	25
FHS	1-250	BLUE			107	76	113	45
FHS	1-450	GREEN			107	76	204	39
FHS	1-625	BLACK			107	76	283	37
FHS	1-800	GRAY			107	76	363	33
FHS	1-1000	RED			107	76	454	29
FHS	1-1250	BROWN			107	76	567	28
FHS	1-1700	ORANGE			107	76	771	24
FHS	1-2200	ORANGE	GRAY		107	76	998	26
*FHS	1-2465	BLUE			107	76	1118	25
*FHS	1-2865	BLUE	GRAY		107	76	1300	25
*FHS	1-3500	BLUE	BROWN		107	76	1588	25

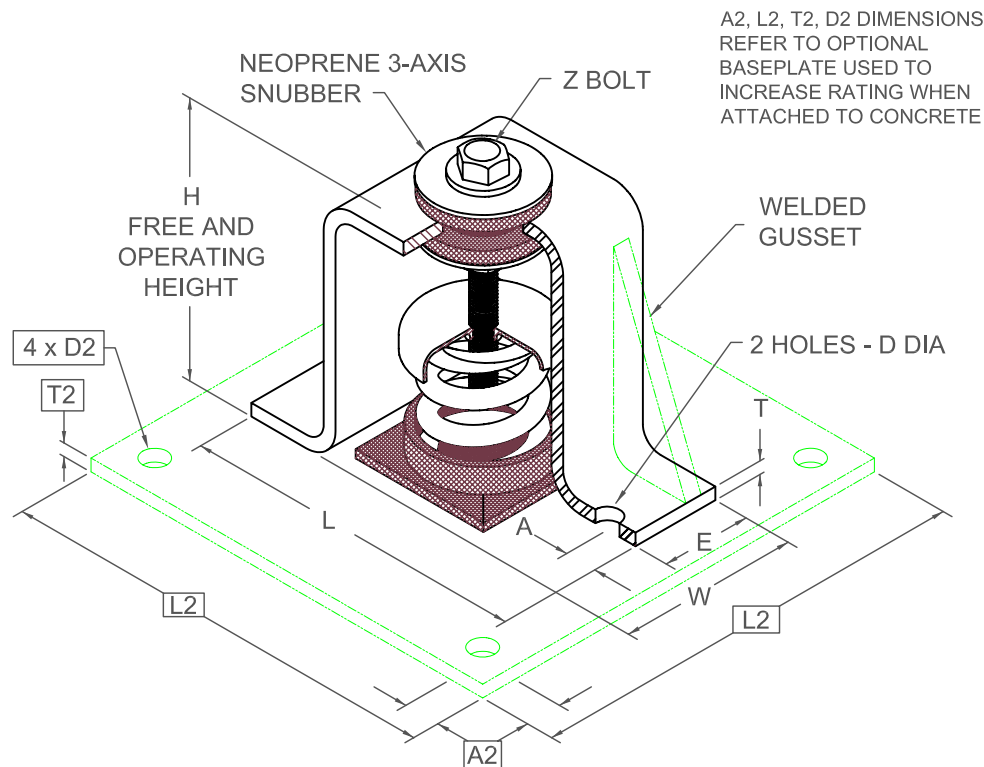
\*INCLUDES WELDED GUSSET AS SHOWN

1-35/805 REQUIRES 10 DIA. x 64 MIN. EMBED ANCHORS IN CONCRETE  
 1-250/3500 REQUIRES 19 DIA. x 119 MIN. EMBED ANCHORS IN CONCRETE  
 (ALLOWABLE LOADS BASED ON 21 MPa MIN. CONCRETE)

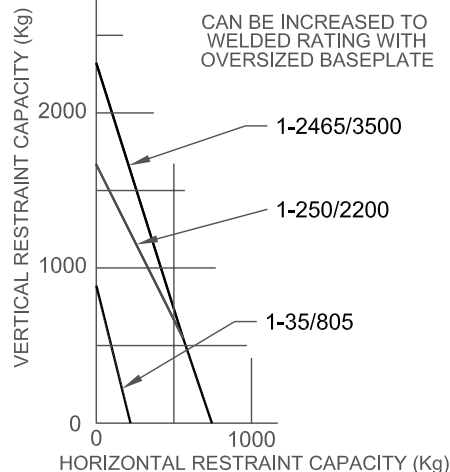
1-35/805 ANCHOR BOLT TORQUE - 27 N-M, PULL TEST - 549 kg  
 1-250/3500 ANCHOR BOLT TORQUE - 203 N-M, PULL TEST - 1644 kg

### SPECIFICATIONS:

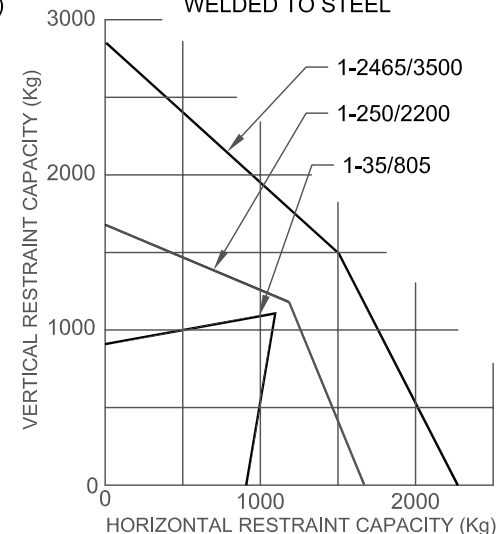
- VERTICALLY AND LATERALLY RESTRAINED SPRING ISOLATOR WITH CONSTANT FREE AND OPERATING HEIGHT AND REPLACEABLE NEOPRENE SNUBBING ELEMENTS.
- 6mm NOMINAL CLEARANCE IN SNUBBING ELEMENTS.
- MINIMUM OVERLOAD OF 50%.
- MINIMUM Kx/Ky RATIO OF 1.0.
- ALL ELEMENTS SAFE AT SOLID LOADING.
- POWDER COATED COILS AND HOT DIPPED GALVANIZED BRACKET
- OSHPD APPROVAL NUMBER R-0433



CONCRETE ANCHORS (SPEC INSPECTION)  
STANDARD HOUSING ONLY



WELDED TO STEEL



Computed horiz and vert seismic load combinations must fall within the restraint capacity envelope. Contact KNC for bolted to steel data.



KINETICS NOISE CONTROL, INC  
 6300 IRELAN PL,  
 DUBLIN, OH 43017 USA  
 Ph: 614 889-0480, Fax: 614 889-0540  
 www.kineticsnoise.com

Model:  
**FHS-1-35/3500**

By: PWM  
 Date: 10/24/01  
 Revised: 02/11/08 / BB

Drawing No:  
**S-01.35-11 METRIC**