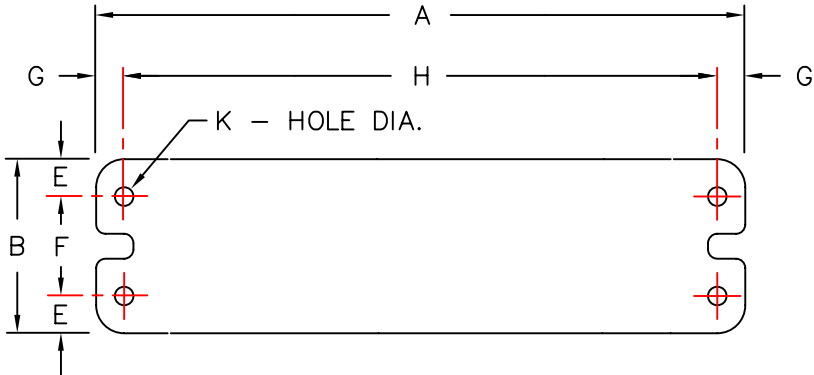


SPRING TYPE	SPRING COLOR	RATED LOAD (LBS./Kg)	RATED DEFL. (IN./MM)	DIMENSIONS (IN./MM)								
				A	B	C	D	E	F	G	H	K
SMP-2500D	BROWN	2500 (1130)	1.14 (29)	12.75 (324)	3.50 (89)	5.25 (133)	.62 (16)	.75 (19)	2.00 (51)	.75 (19)	11.25 (286)	.50 (13)
SMP-3400D	ORANGE	3400 (1540)	1.00 (25)	12.75 (324)	3.50 (89)	5.25 (133)	.62 (16)	.75 (19)	2.00 (51)	.75 (19)	11.25 (286)	.50 (13)
SMP-4400D	ORANGE / GRAY	4400 (1995)	1.00 (25)	12.75 (324)	3.50 (89)	5.25 (133)	.62 (16)	.75 (19)	2.00 (51)	.75 (19)	11.25 (286)	.50 (13)
SMP-4930D	BLUE	4930 (2230)	1.00 (25)	12.75 (324)	3.50 (89)	5.25 (133)	.62 (16)	.75 (19)	2.00 (51)	.75 (19)	11.25 (286)	.50 (13)
* SMP-5730D	BLUE / GRAY	5730 (2559)	1.00 (25)	12.75 (324)	3.50 (89)	5.25 (133)	.62 (16)	.75 (19)	2.00 (51)	.75 (19)	11.25 (286)	.50 (13)
* SMP-7000D	BLUE / BROWN	7000 (3170)	1.00 (25)	12.75 (324)	3.50 (89)	5.25 (133)	.62 (16)	.75 (19)	2.00 (51)	.75 (19)	11.25 (286)	.50 (13)



**BOLTING TEMPLATE**

SMP ISOLATORS HAVE A TYPICAL  $K_x/K_y$  OF 1.0  
 SMP ISOLATORS HAVE A TYPICAL OVERLOAD CAPACITY OF 50%  
 ITEMS MARKED (\*) HAVE A TYPICAL OVERLOAD CAPACITY OF 30%.  
 SMP SPRING ELEMENTS AND LOAD PLATES ARE PAINTED  
 SMP HOUSINGS ARE CAST IRON  
 SMP HARDWARE ARE BRIGHT ZINC PLATED  
 SMP ISOLATORS HAVE ADJUSTABLE SNUBBING

NOTE: ALL THREADED MEMBERS ARE AMERICAN STANDARD.



TITLE  
**SMP-2500D/7000D**

LAST DATE REVISED  
**5/20/97**

DRAWN BY  
**DW**

DRAWING NO.  
**S-01.26-1P**