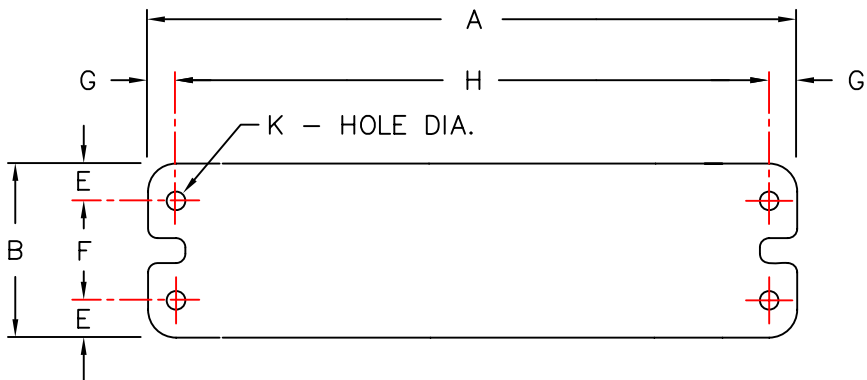


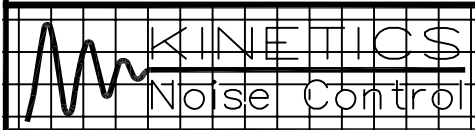
SPRING TYPE	SPRING COLOR	RATED LOAD (LBS./Kg)	RATED DEFL. (IN./MM)	DIMENSIONS (IN./MM)								
				A	B	C	D	E	F	G	H	K
SMI-2500D	BROWN	2500 (1130)	1.14 (29)	12.75 (324)	3.50 (89)	5.25 (133)	.62 (16)	.75 (19)	2.00 (51)	.75 (19)	11.25 (286)	.50 (13)
SMI-3400D	ORANGE	3400 (1540)	1.00 (25)	12.75 (324)	3.50 (89)	5.25 (133)	.62 (16)	.75 (19)	2.00 (51)	.75 (19)	11.25 (286)	.50 (13)
SMI-4400D	ORANGE / GRAY	4400 (1995)	1.00 (25)	12.75 (324)	3.50 (89)	5.25 (133)	.62 (16)	.75 (19)	2.00 (51)	.75 (19)	11.25 (286)	.50 (13)
SMI-4930D	BLUE	4930 (2230)	1.00 (25)	12.75 (324)	3.50 (89)	5.25 (133)	.62 (16)	.75 (19)	2.00 (51)	.75 (19)	11.25 (286)	.50 (13)
SMI-5730D	BLUE / GRAY	5730 (2559)	1.00 (25)	12.75 (324)	3.50 (89)	5.25 (133)	.62 (16)	.75 (19)	2.00 (51)	.75 (19)	11.25 (286)	.50 (13)
SMI-7000D	BLUE / BROWN	7000 (3170)	1.00 (25)	12.75 (324)	3.50 (89)	5.25 (133)	.62 (16)	.75 (19)	2.00 (51)	.75 (19)	11.25 (286)	.50 (13)



BOLTING TEMPLATE

SMI ISOLATORS HAVE A TYPICAL K_x/K_y OF 1.0
 SMI ISOLATORS HAVE A TYPICAL OVERLOAD CAPACITY OF 50%
 ITEMS MARKED (*) HAVE A TYPICAL OVERLOAD CAPACITY OF 30%.
 SMI SPRING ELEMENTS AND LOAD PLATES ARE PAINTED
 SMI HOUSINGS ARE CAST IRON
 SMI HARDWARE ARE BRIGHT ZINC PLATED
 SMI ISOLATORS HAVE ADJUSTABLE SNUBBING

NOTE: ALL THREADED MEMBERS ARE AMERICAN STANDARD.



TITLE
SMI-2500D/7000D

LAST DATE
 REVISED
5/20/97

DRAWN BY
DW

DRAWING NO.
S-01.26-11