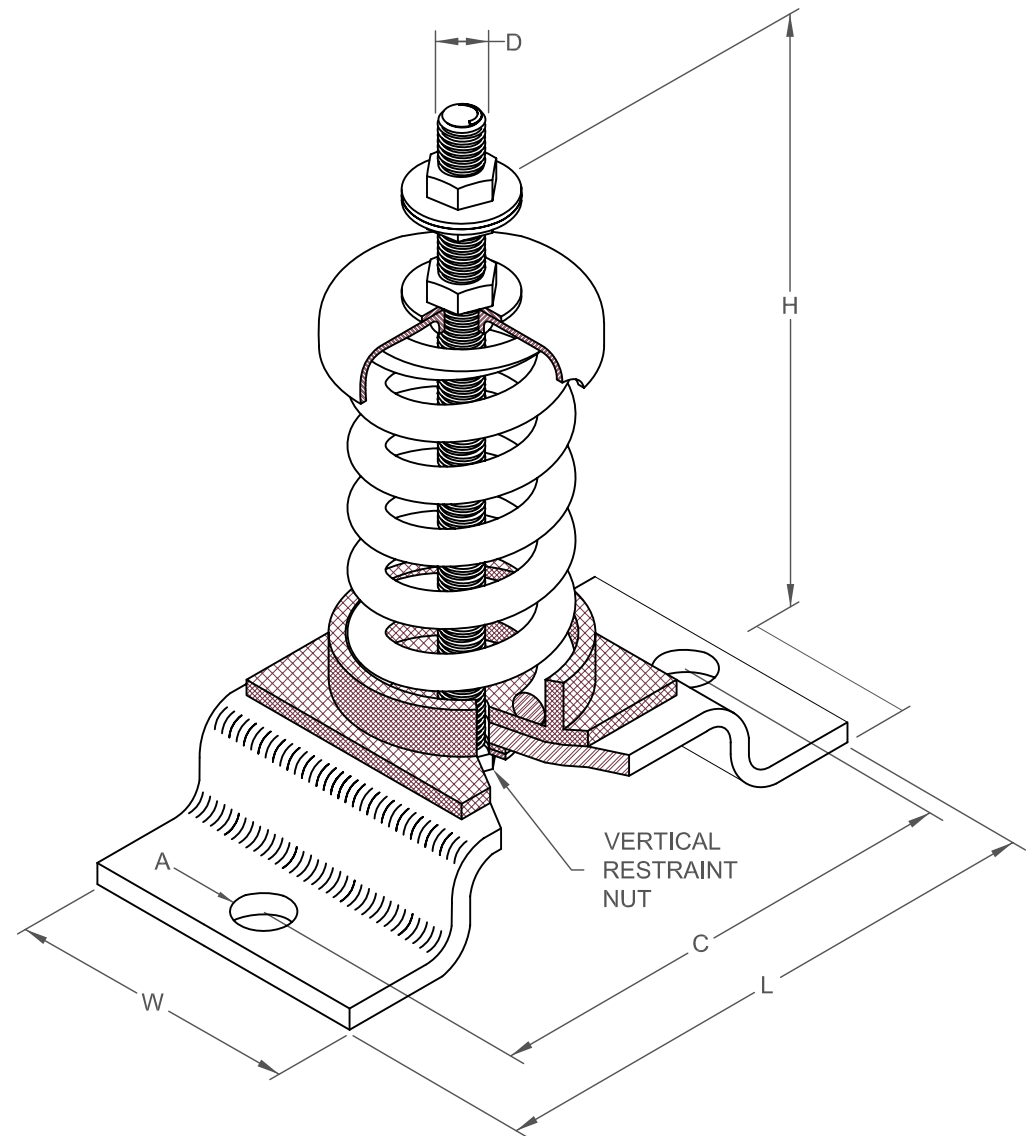


FRS 2" DEFLECTION ISOLATOR
IP UNITS (INCHES AND POUNDS)

TYPE	L	W	C	A	H	D
2-100/1975	8.00	4.50	6.50	0.69	11.00	0.63

STANDARD RATINGS		SPRING COIL					
TYPE	SIZE	COLOR		FREE HT.	O.D.	RATED	
		OUTER	INNER			LOAD	DEFL.
FRS	2-100	GRAY		6.09	3.50	100	2.00
FRS	2-135	BEIGE		6.09	3.50	135	2.00
FRS	2-185	BROWN		6.09	3.50	185	2.00
FRS	2-225	GRAY	BROWN	6.09	3.50	225	2.00
FRS	2-250	BLUE		6.09	3.50	250	2.00
FRS	2-375	BLUE	BROWN	6.09	3.50	375	2.00
FRS	2-500	GREEN		6.09	3.50	500	2.00
FRS	2-625	GREEN	BROWN	6.09	3.50	625	2.00
FRS	2-750	BLACK		6.09	3.50	750	2.00
FRS	2-875	BLACK	BROWN	6.09	3.50	875	2.00
FRS	2-995	ORANGE		6.09	3.50	995	2.00
FRS	2-1120	ORANGE	BROWN	6.09	3.50	1120	2.00
FRS	2-1400	ORANGE	GREEN	6.09	3.50	1400	2.01
FRS	2-1600	RED		6.09	3.50	1600	2.00
FRS	2-1975	RED	GREEN	6.09	3.50	1975	1.98



SPECIFICATIONS:

- ISOLATORS ARE DESIGNED FOR VERTICAL MOTION RESTRAINT
- ISOLATORS CAN BE BOLTED TOP AND BOTTOM
- ISOLATORS HAVE A MINIMUM Kx/Ky RATIO OF 1.0
- ISOLATORS HAVE A TYPICAL OVERLOAD CAPACITY OF 50%
- SPRING ELEMENTS ARE SAFE AT SOLID LOADING
- SPRING ELEMENTS ARE POWDER COATED
- ALL HARDWARE TO BE ZINC PLATED
- NEOPRENE NOISE CAP CONTAINS AN EMBEDDED STEEL CUP



KINETICS NOISE CONTROL, INC
6300 IRELAN PL,
DUBLIN, OH 43017 USA
Ph: 614 889-0480, Fax: 614 889-0540
www.kineticsnoise.com

Model:
FRS
2-100/1975

By: **JMJ**
Date: **03/03/03**
Revised: **07/21/05 / BB**

Drawing No:
S-01.23-21