

# FLSS 51 mm DEFLECTION SEISMIC ISOLATOR

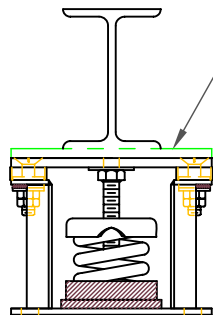
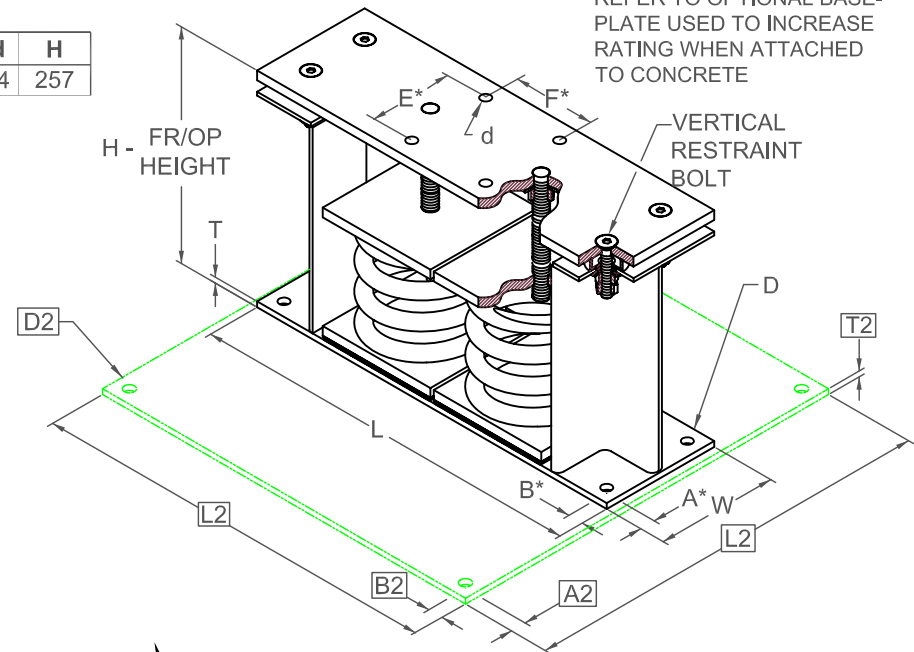
## S-I UNITS (mm AND kg)

TYPE	L	W	T	A	B	D	E	F	d	H
2-4000/9000	445	152	13	19	19	17	70	70	14	257

A2, B2, L2, T2, D2 DIMENSIONS REFER TO OPTIONAL BASE-PLATE USED TO INCREASE RATING WHEN ATTACHED TO CONCRETE

STANDARD RATINGS		SPRING COIL						
TYPE	SIZE	OUTER	INNER1	INNER2	FREE HT.	O.D.	LOAD	DEFL.
FLSS	2-4000	ORANGE			178	127	1814	51
FLSS	2-5000	BLUE			178	127	2268	51
FLSS	2-5500	BLUE	BLUE		178	127	2495	51
FLSS	2-6050	BLUE	GREEN		178	127	2744	51
FLSS	2-6500	BLUE	BLACK		178	127	2948	51
FLSS	2-7000	BLUE	ORANGE		178	127	3175	51
FLSS	2-7800	BLUE	ORANGE	GREEN	178	127	3538	51
FLSS	2-8200	BLUE	RED		178	127	3719	51
FLSS	2-9000	BLUE	RED	GREEN	178	127	4082	51

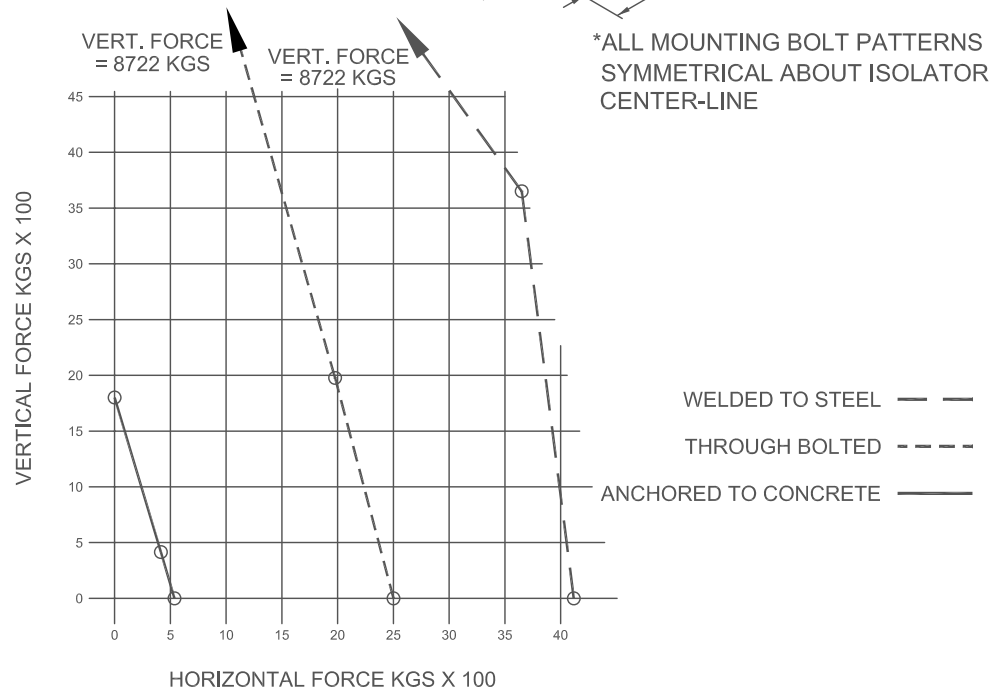
2-4000/9000 REQUIRES 016 DIA. x 102 MIN. EMBED ANCHORS IN CONCRETE  
 (ALLOWABLE LOADS BASED ON 21 MPa MIN CONCRETE)  
 2-4000/9000 ANCHOR BOLT TORQUE - 102 N-M, PULL TEST - 1211 kg



IF EQUIP SUPPORT STEEL IS 90° TO THE LONG ISOLATOR AXIS, AN ADD'L PLATE EQUAL IN THICKNESS TO THE TOP PLATE IS REQUIRED

### SPECIFICATIONS:

- VERTICALLY AND Laterally RESTRAINED SPRING ISOLATOR WITH CONSTANT FREE AND OPERATING HEIGHT AND REPLACEABLE NEOPRENE SNUBBING ELEMENTS.
- MINIMUM COIL OVERLOAD OF 50%.
- MINIMUM Kx/Ky RATIO OF 1.0.
- ALL ELEMENTS SAFE AT SOLID LOADING.
- POWDER COATED COILS AND HOT DIPPED GALVANIZED BRACKET.
- HOUSINGS MAY BE USED FOR BLOCKING DURING EQUIPMENT ERECTION.



\*ALL MOUNTING BOLT PATTERNS SYMMETRICAL ABOUT ISOLATOR CENTER-LINE

Computed horiz and vert seismic load combinations must fall within the restraint capacity envelope. Contact KNC for bolted to steel data.



KINETICS NOISE CONTROL, INC  
 6300 IRELAN PL,  
 DUBLIN, OH 43017 USA  
 Ph: 614 889-0480, Fax: 614 889-0540  
 www.kineticsnoise.com

Model:  
**FLSS-2-4000 / 9000**

By: **JMJ**  
 Date: **07/12/02**  
 Revised: **05/04/06 / BB**

Drawing No:  
**S-01.22-23S METRIC**