

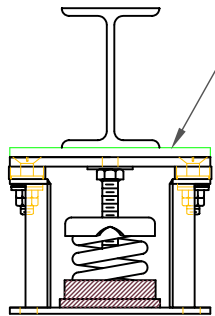
FLS 102 mm DEFLECTION ISOLATOR

S-I UNITS (mm AND kg)

TYPE	L	W	T	A	B	D	E	F	d	H
4-100/1600	273	152	6	19	19	17	70	70	14	330

STANDARD RATINGS		SPRING COIL				
TYPE	SIZE	COLOR	FREE		RATED	
			HT.	O.D.	LOAD	DEFL.
FLS	4-100	GRAY	254	143	45	102
FLS	4-250	BLUE	254	143	113	102
FLS	4-500	GREEN	254	143	227	102
FLS	4-750	BLACK	254	143	340	102
FLS	4-1000	RED	254	143	454	102
FLS	4-1250	BROWN	254	143	567	102
FLS	4-1600	ORANGE	254	143	726	102

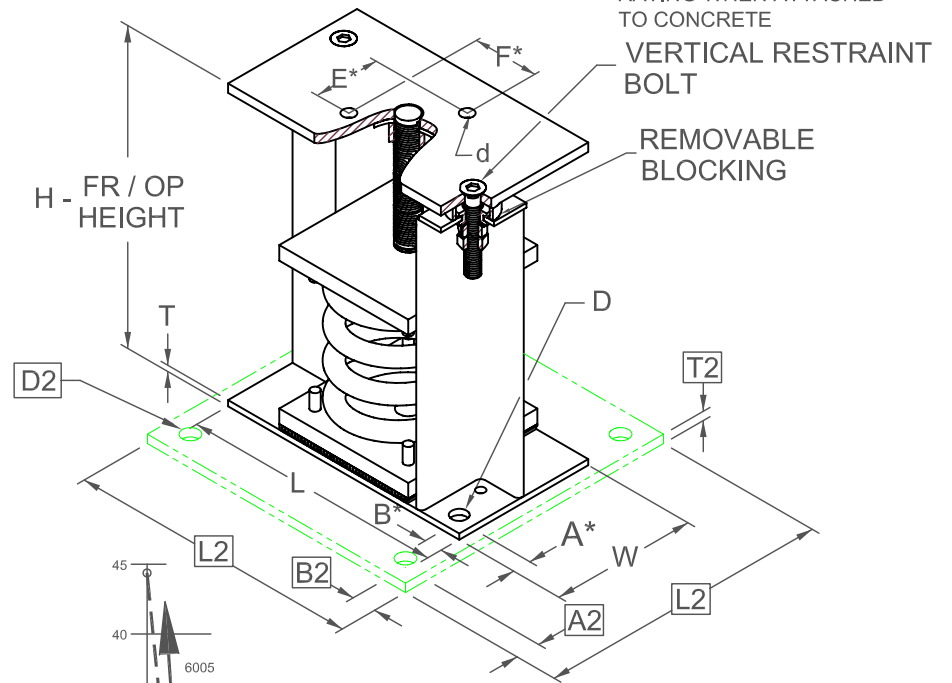
4-100/1600 REQUIRES 016 DIA. x 102 MIN. EMBED ANCHORS IN CONCRETE
 (ALLOWABLE LOADS BASED ON 21 MPa MIN CONCRETE)
 4-100/1600 ANCHOR BOLT TORQUE - 102 N-M, PULL TEST - 1211 kg



IF EQUIP SUPPORT STEEL IS 90° TO THE LONG ISOLATOR AXIS, AN ADD'L PLATE EQUAL IN THICKNESS TO THE TOP PLATE IS REQUIRED

SPECIFICATIONS:

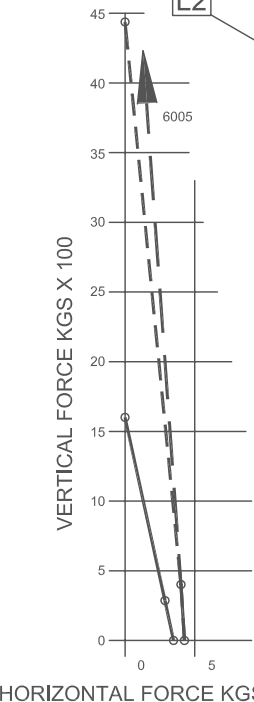
- VERTICALLY AND Laterally RESTRAINED SPRING ISOLATOR WITH CONSTANT FREE AND OPERATING HEIGHT AND REPLACEABLE NEOPRENE SNUBBING ELEMENTS.
- MINIMUM COIL OVERLOAD OF 50%.
- MINIMUM Kx/Ky RATIO OF 1.0.
- ALL ELEMENTS SAFE AT SOLID LOADING.
- POWDER COATED COILS AND HOT DIPPED GALVANIZED BRACKET.
- HOUSINGS MAY BE USED FOR BLOCKING DURING EQUIPMENT ERECTION.



A2, B2, L2, T2, D2 DIMENSIONS REFER TO OPTIONAL BASE-PLATE USED TO INCREASE RATING WHEN ATTACHED TO CONCRETE

VERTICAL RESTRAINT BOLT

REMOVABLE BLOCKING



*ALL MOUNTING BOLT PATTERNS SYMMETRICAL ABOUT ISOLATOR CENTER-LINE

WELDED TO STEEL — — —
 THROUGH BOLTED - - - -
 ANCHORED TO CONCRETE — ● —

HORIZONTAL FORCE KGS X 100

Computed horiz and vert seismic load combinations must fall within the restraint capacity envelope. Contact KNC for bolted to steel data.



KINETICS NOISE CONTROL, INC
 6300 IRELAN PL,
 DUBLIN, OH 43017 USA
 Ph: 614 889-0480, Fax: 614 889-0540
 www.kineticsnoise.com

Model:
FLS-4-100 / 1600

By: **JMJ**
 Date: **07/09/02**
 Revised: **5/5/06 / PWM**

Drawing No:
S-01.22-41
 METRIC