

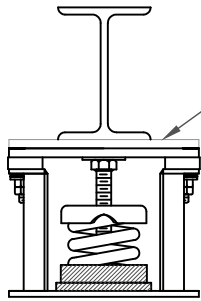
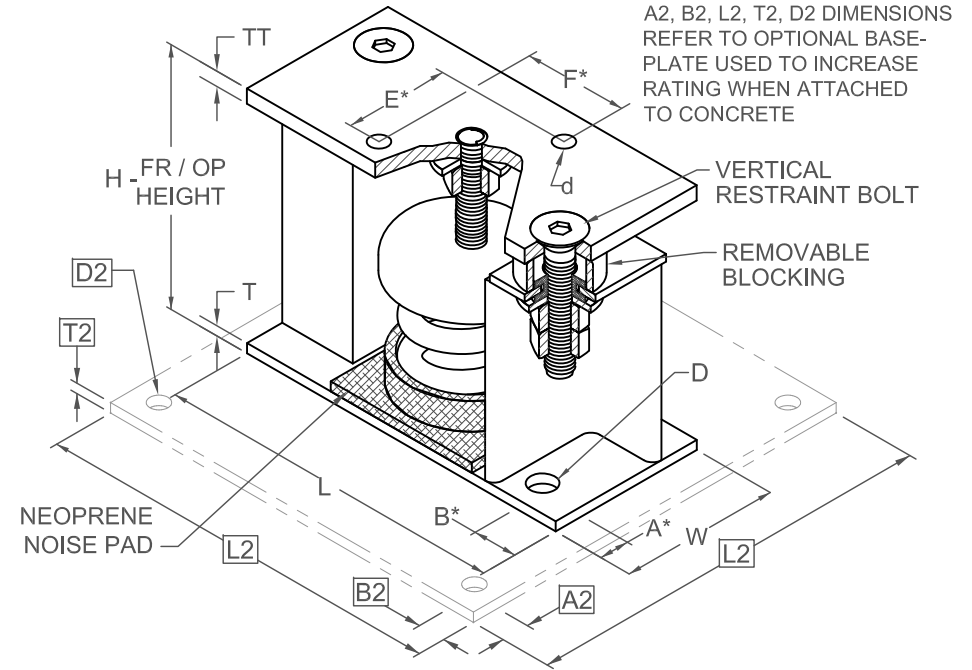
FLS 2" DEFLECTION ISOLATOR
IP UNITS (INCHES AND POUNDS)

TYPE	L	W	T	A	B	D	E	F	d	H	TT
2-100/1975	9.00	5.00	0.25	0.75	0.75	0.69	2.75	2.75	0.56	8.00	0.38

*ALL MOUNTING BOLT PATTERNS SYMMETRICAL ABOUT ISOLATOR CENTER-LINE

STANDARD RATINGS	SPRING COIL						
	TYPE	SIZE	COLOR		FREE HT.	O.D.	RATED LOAD DEFL.
FLS	2-100	GRAY			6.09	3.50	100 2.00
FLS	2-135	BEIGE			6.09	3.50	135 2.00
FLS	2-185	BROWN			6.09	3.50	185 2.00
FLS	2-225	GRAY	BROWN		6.09	3.50	225 2.00
FLS	2-250	BLUE			6.09	3.50	250 2.00
FLS	2-375	BLUE	BROWN		6.09	3.50	375 2.00
FLS	2-500	GREEN			6.09	3.50	500 2.00
FLS	2-625	GREEN	BROWN		6.09	3.50	625 2.00
FLS	2-750	BLACK			6.09	3.50	750 2.00
FLS	2-875	BLACK	BROWN		6.09	3.50	875 2.00
FLS	2-995	ORANGE			6.09	3.50	995 2.00
FLS	2-1120	ORANGE	BROWN		6.09	3.50	1120 2.00
FLS	2-1400	ORANGE	GREEN		6.09	3.50	1400 2.01
FLS	2-1600	RED			6.09	3.50	1600 2.00
FLS	2-1975	RED	GREEN		6.09	3.50	1975 1.98

2-100/1975 REQUIRES 0.62 DIA. x 4.00 MIN. EMBED ANCHORS IN CONCRETE
(ALLOWABLE LOADS BASED ON 3000 PSI MIN CONCRETE)
2-100/1975 ANCHOR BOLT TORQUE - 75 FT-LB, PULL TEST - 2670 LB

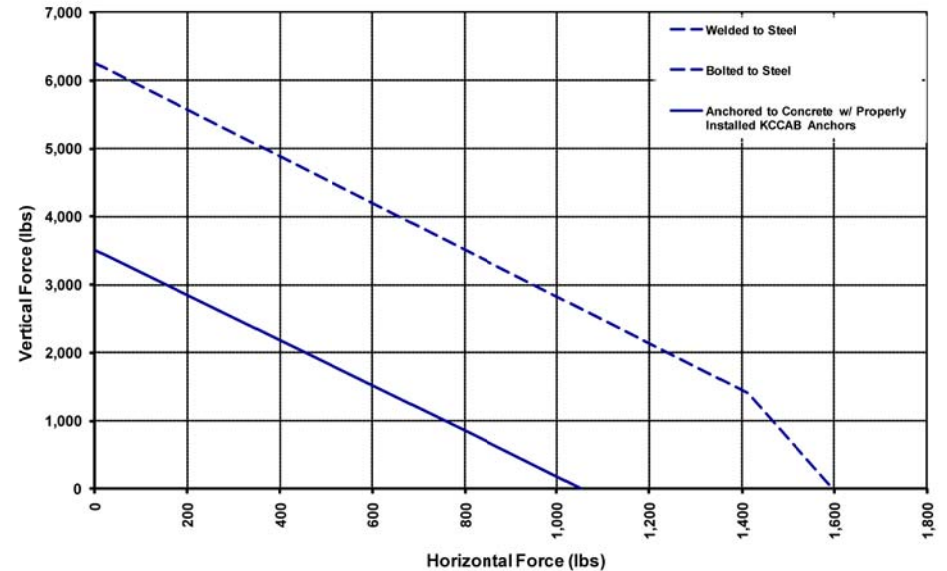


IF EQUIP SUPPORT STEEL IS 90° TO THE LONG ISOLATOR AXIS, AN ADD'L PLATE EQUAL IN THICKNESS TO THE TOP PLATE IS REQUIRED

SPECIFICATIONS:

- VERTICALLY AND Laterally RESTRAINED SPRING ISOLATOR WITH CONSTANT FREE AND OPERATING HEIGHT AND REPLACEABLE NEOPRENE SNUBBING ELEMENTS.
- WHEN PROPERLY ADJUSTED, MAX. CLEARANCE IN SNUBBING ELEMENTS IS LIMITED TO 0.25 INCHES.
- MINIMUM COIL OVERLOAD OF 50%.
- MINIMUM Kx/Ky RATIO OF 1.0.
- ALL ELEMENTS SAFE AT SOLID LOADING.
- POWDER COATED COILS AND HOT DIPPED GALVANIZED BRACKET.
- HOUSINGS MAY BE USED FOR BLOCKING DURING EQUIPMENT ERECTION.

FLS-2-100/1975 Seismic Capacity Envelopes



Computed horiz. and vert. seismic load combinations must fall within the restraint capacity envelope.



KINETICS NOISE CONTROL, INC
6300 IRELAN PL,
DUBLIN, OH 43017 USA
Ph: 614 889-0480, Fax: 614 889-0540
www.kineticsnoise.com

Model:
FLS-2-100/1975

By: JMJ
Date: 07/09/02
Revised: 05/10/10 / BB

Drawing No:
S-01.22-21