

# FLS 1" DEFLECTION ISOLATOR

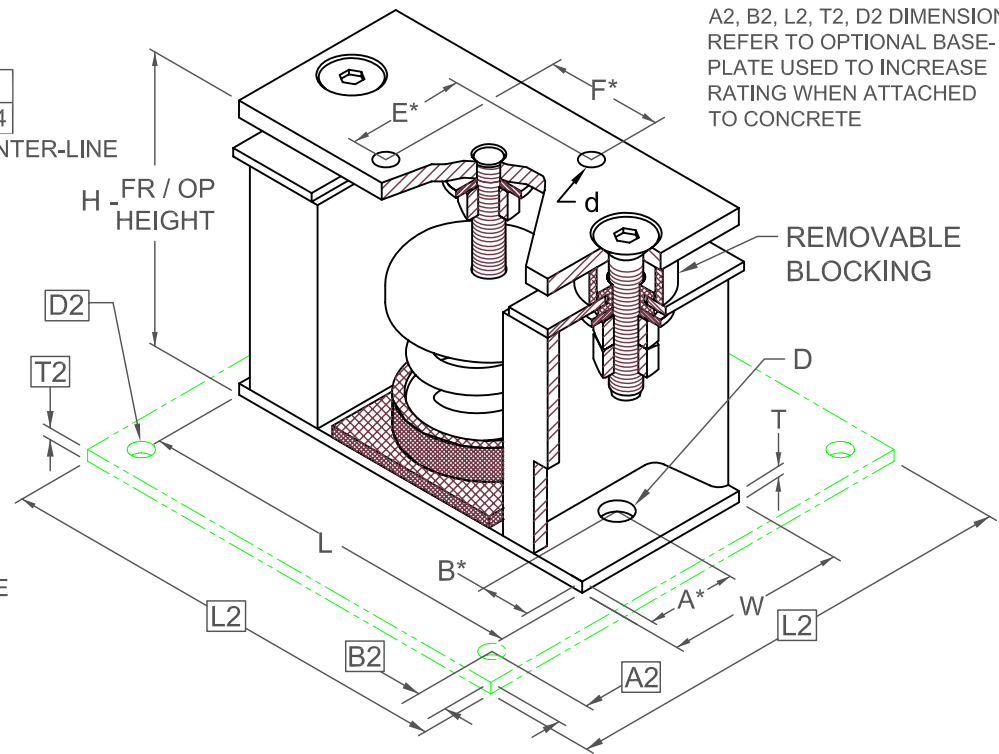
## IP UNITS (INCHES AND POUNDS)

TYPE	L	W	T	A	B	D	E	F	d	H
1-35/805	6.50	3.00	0.19	1.50	0.50	0.56	1.75	1.88	0.44	4.44

\*ALL MOUNTING BOLT PATTERNS SYMMETRICAL ABOUT ISOLATOR CENTER-LINE

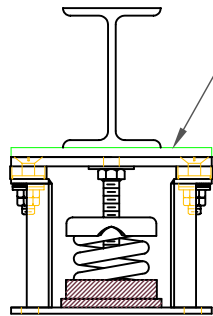
STANDARD RATINGS	SPRING COIL						
	COLOR		FREE		RATED		DEFL.
TYPE	SIZE	OUTER	INNER	HT.	O.D.	LOAD	
FLS	1-35	BLUE		3.19	1.75	35	1.52
FLS	1-70	GREEN		3.19	1.75	70	1.36
FLS	1-120	GRAY		3.19	1.75	120	1.18
FLS	1-220	BROWN		3.19	1.75	220	1.07
FLS	1-370	ORANGE		3.19	1.75	370	0.96
FLS	1-500	BEIGE		3.19	1.75	500	1.00
FLS	1-600	CHROME		3.19	1.75	600	1.00
FLS	1-700	BEIGE	WHITE	3.19	1.75	700	1.00
FLS	1-805	CHROME	WHITE	3.19	1.75	805	1.01

1-35/805 REQUIRES 0.50 DIA. x 4.00 MIN. EMBED ANCHORS IN CONCRETE  
(ALLOWABLE LOADS BASED ON 3000 PSI MIN CONCRETE)  
1-35/805 ANCHOR BOLT TORQUE - 55 FT-LB, PULL TEST - 1750 LB



A2, B2, L2, T2, D2 DIMENSIONS REFER TO OPTIONAL BASE-PLATE USED TO INCREASE RATING WHEN ATTACHED TO CONCRETE

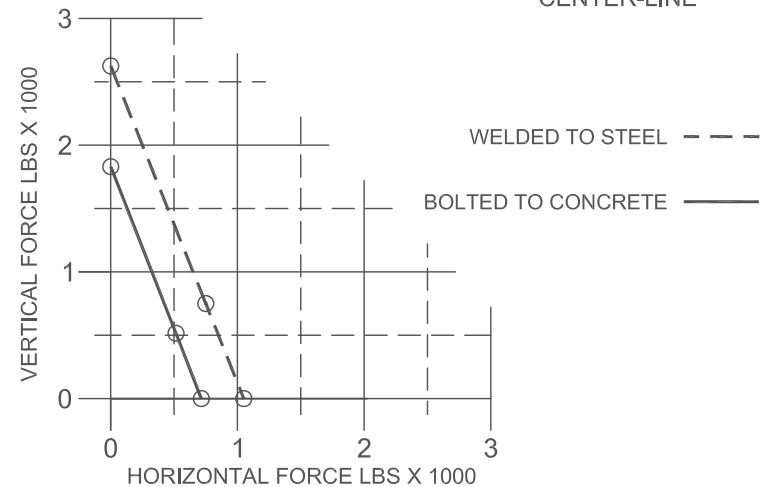
\*ALL MOUNTING BOLT PATTERNS SYMMETRICAL ABOUT ISOLATOR CENTER-LINE



IF EQUIP SUPPORT STEEL IS 90° TO THE LONG ISOLATOR AXIS, AN ADD'L PLATE EQUAL IN THICKNESS TO THE TOP PLATE IS REQUIRED

### SPECIFICATIONS:

- VERTICALLY AND Laterally RESTRAINED SPRING ISOLATOR WITH CONSTANT FREE AND OPERATING HEIGHT AND REPLACEABLE NEOPRENE SNUBBING ELEMENTS.
- MINIMUM COIL OVERLOAD OF 50%.
- MINIMUM  $K_x/K_y$  RATIO OF 1.0.
- ALL ELEMENTS SAFE AT SOLID LOADING.
- POWDER COATED COILS AND HOT DIPPED GALVANIZED BRACKET.
- HOUSINGS MAY BE USED FOR BLOCKING DURING EQUIPMENT ERECTION.



Computed horiz and vert seismic load combinations must fall within the restraint capacity envelope. Contact KNC for bolted to steel data.



KINETICS NOISE CONTROL, INC  
6300 IRELAN PL,  
DUBLIN, OH 43017 USA  
Ph: 614 889-0480, Fax: 614 889-0540  
www.kineticsnoise.com

Model:  
**FLS-1-35 / 805**

By: **BB**  
Date: **03/21/05**  
Revised: **5/5/06 / PWM**

Drawing No:  
**S-01.22-10**