

### SPRING DATA

SPRING ISOLATORS ARE COMPUTER SELECTED AND LOCATED TO PROVIDE A NOMINAL 1 INCH (25 mm) STATIC DEFLECTION.

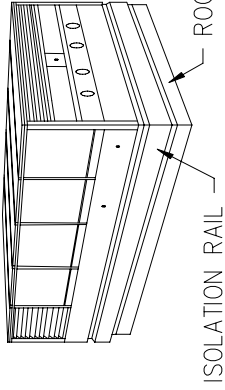
SPRING ISOLATORS HAVE A MINIMUM  $K_x/K_y$  OF 1.2

SPRING ISOLATORS HAVE A TYPICAL OVERLOAD CAPACITY OF 50%

SPRING ISOLATORS ARE SAFE AT SOLID LOADING

SPRING ISOLATORS ARE PAINTED.

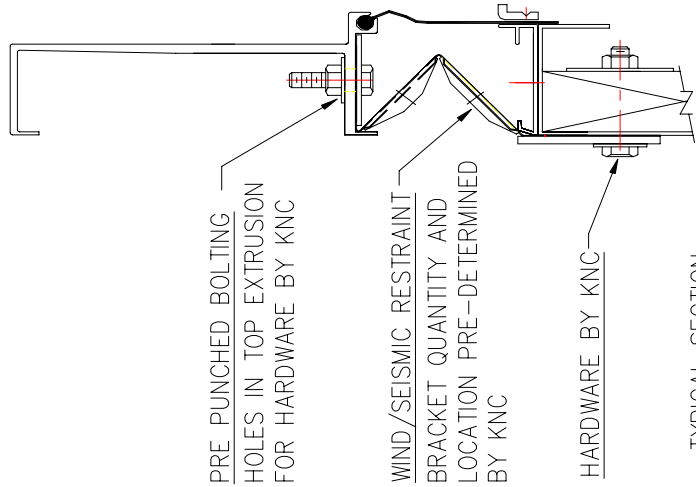
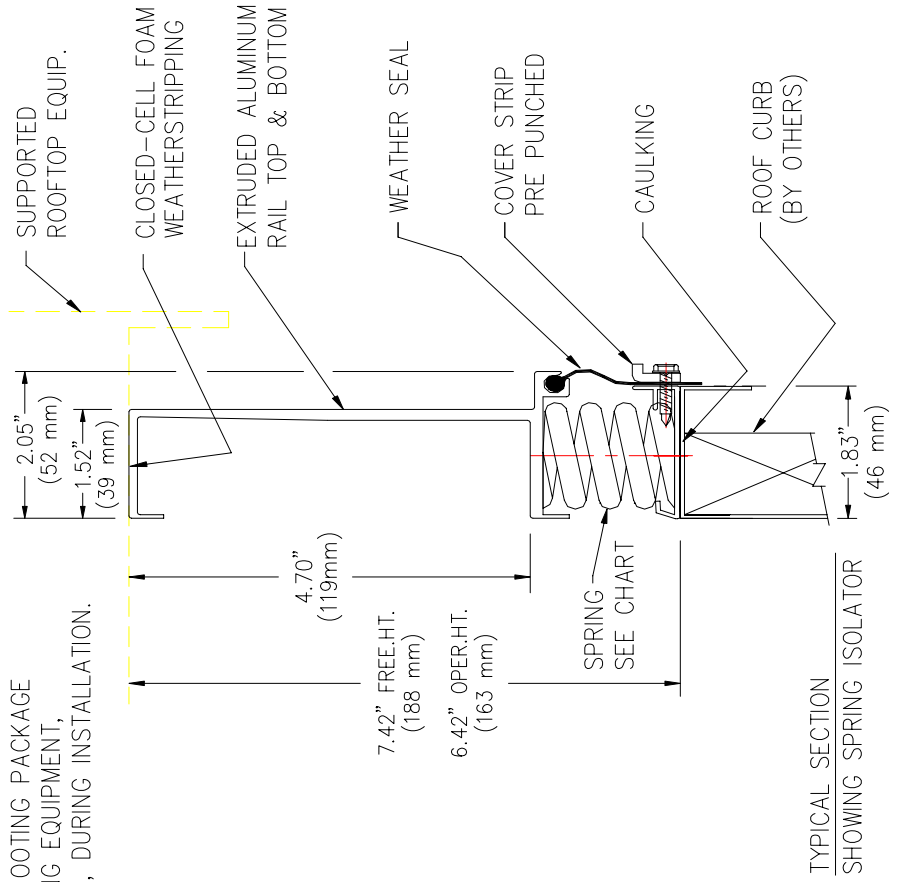
### ROOFTOP EQUIPMENT



### SPECIAL NOTE:

ALL UNITS SUPPLIED WITH A TROUBLE SHOOTING PACKAGE FOR LEVELING EQUIPMENT, IF REQUIRED, DURING INSTALLATION.

RATED LOAD LB/KG	RATED DEFL. IN/mm	SPRING FR. HT. IN/mm	SPRING O. D. IN/mm	COLOR CODE
30/14	1.00/25	2.50/63	1.46/37	BLUE
65/30	1.00/25	2.50/63	1.46/37	GREEN
120/55	1.00/25	2.50/63	1.46/37	GRAY
205/93	1.00/25	2.50/63	1.46/37	BROWN



## MODEL KSR-1 ISOLATION RAIL

PAGE 1 OF 4 - DRAWING # S-88.300

RELEASE DATE: 5/17/04



DUBLIN, OHIO, USA • MISSISSAUGA, ONTARIO, CANADA

Toll Free (USA only): 800-959-1229  
 International: 614-889-0480  
 Fax: 614-889-0540  
 World Wide Web: www.kineticsnoise.com  
 Email: sales@kineticsnoise.com

DOCUMENT:

P6.2.2



### SPRING DATA

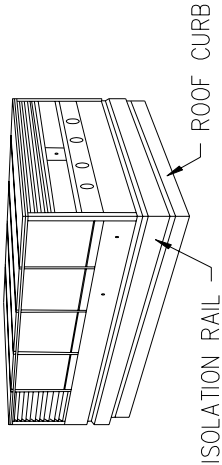
SPRING ISOLATORS ARE COMPUTER SELECTED AND LOCATED TO PROVIDE A NOMINAL 2 INCH (50 mm) STATIC DEFLECTION.

SPRING ISOLATORS HAVE A MINIMUM  $K_x/K_y$  OF 1.0

SPRING ISOLATORS ARE SAFE AT SOLID LOADING

SPRING ISOLATORS ARE PAINTED.

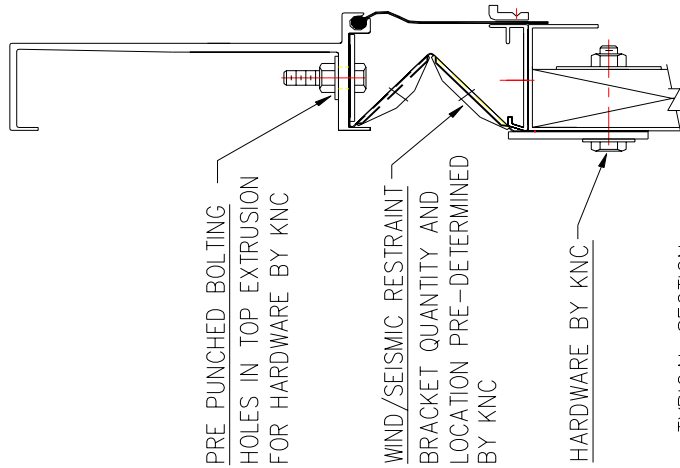
### ROOFTOP EQUIPMENT



RATED LOAD LB/KG	RATED DEFL. IN/MM	SPRING FR. HT. IN/MM	SPRING O. D. IN/MM	COLOR CODE
30/14	2.00/50	3.75/95	1.46/37	GRAY
65/30	2.00/50	3.75/95	1.46/37	BLUE
120/55	2.00/50	3.75/95	1.46/37	GREEN
205/93	2.00/50	3.75/95	1.46/37	BLACK

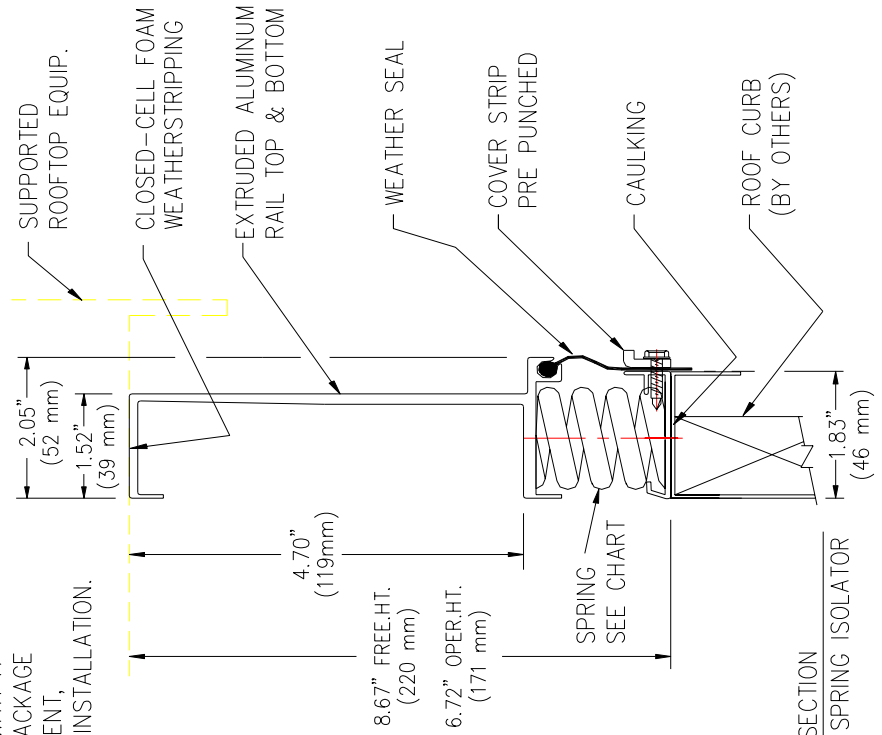
### SPECIAL NOTE:

ALL UNITS SUPPLIED WITH A TROUBLE SHOOTING PACKAGE FOR LEVELING EQUIPMENT, IF REQUIRED, DURING INSTALLATION.



TYPICAL SECTION SHOWING WIND/SEISMIC RESTRAINT

NOTE: IF SEISMIC APPLICATION IS REQUIRED CONSULT SALES REPRESENTATIVE.



TYPICAL SECTION SHOWING SPRING ISOLATOR

## MODEL KSR-2 ISOLATION RAIL

PAGE 2 OF 4 - DRAWING # S-88.350

RELEASE DATE: 5/17/04



DUBLIN, OHIO, USA • MISSISSAUGA, ONTARIO, CANADA

Toll Free (USA only): 800-959-1229  
 International: 614-889-0480  
 Fax: 614-889-0540  
 World Wide Web: www.kineticsnoise.com  
 Email: sales@kineticsnoise.com

DOCUMENT:

P6.2.2



### SPRING DATA

SPRING ISOLATORS ARE COMPUTER SELECTED AND LOCATED TO PROVIDE A NOMINAL 1 INCH (25 mm) STATIC DEFLECTION.

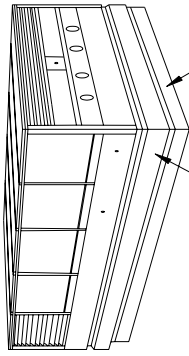
SPRING ISOLATORS HAVE A MINIMUM  $K_x/K_y$  OF 1.2

SPRING ISOLATORS HAVE A TYPICAL OVERLOAD CAPACITY OF 50%

SPRING ISOLATORS ARE SAFE AT SOLID LOADING

SPRING ISOLATORS ARE PAINTED.

### ROOFTOP EQUIPMENT

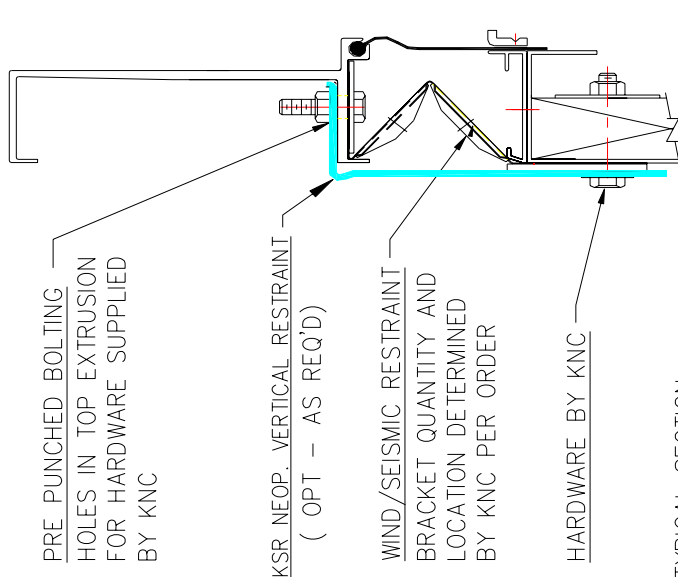


ISOLATION RAIL ROOF CURB

### SPECIAL NOTE:

ALL UNITS SUPPLIED WITH A TROUBLE SHOOTING PACKAGE FOR LEVELING EQUIPMENT, IF REQUIRED, DURING INSTALLATION.

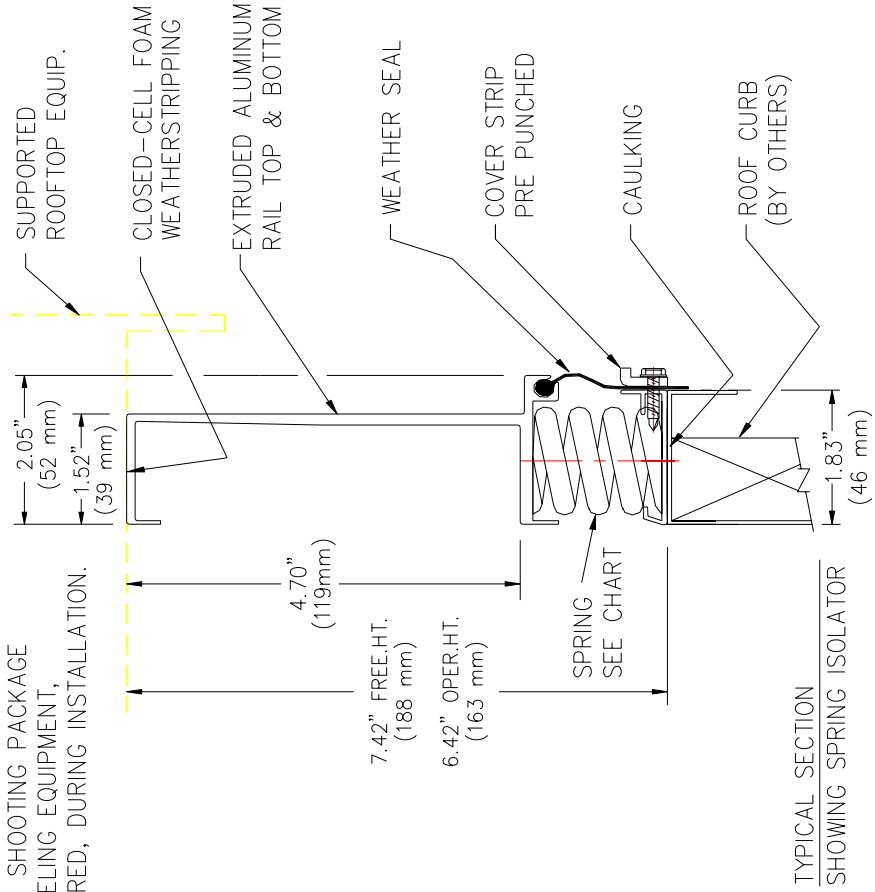
RATED LOAD LB/KG	RATED DEFL. IN/mm	SPRING FR. HT. IN/mm	SPRING O. D. IN/mm	COLOR CODE
30/14	1.00/25	2.50/63	1.46/37	BLUE
65/30	1.00/25	2.50/63	1.46/37	GREEN
120/55	1.00/25	2.50/63	1.46/37	GRAY
205/93	1.00/25	2.50/63	1.46/37	BROWN



### TYPICAL SECTION

SHOWING WIND/SEISMIC LATERAL & VERTICAL RESTRAINT

NOTE: IF SEISMIC APPLICATION IS REQUIRED CONSULT SALES REPRESENTATIVE.



### TYPICAL SECTION

SHOWING SPRING ISOLATOR

## MODEL KSR-1 ISOLATION RAIL

PAGE 3 OF 4 - DRAWING # S-88.400

RELEASE DATE: 5/17/04



DUBLIN, OHIO, USA • MISSISSAUGA, ONTARIO, CANADA

Toll Free (USA only): 800-959-1229  
 International: 614-889-0480  
 Fax: 614-889-0540  
 World Wide Web: www.kineticsnoise.com  
 Email: sales@kineticsnoise.com

DOCUMENT:

P6.2.2



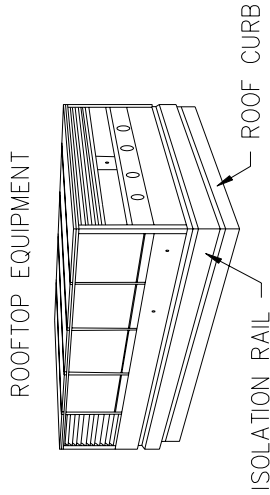
### SPRING DATA

SPRING ISOLATORS ARE COMPUTER SELECTED AND LOCATED TO PROVIDE A NOMINAL 2 INCH (50 mm) STATIC DEFLECTION.

SPRING ISOLATORS HAVE A MINIMUM  $K_x/K_y$  OF 1.0

SPRING ISOLATORS ARE SAFE AT SOLID LOADING

SPRING ISOLATORS ARE PAINTED.



ROOFTOP EQUIPMENT

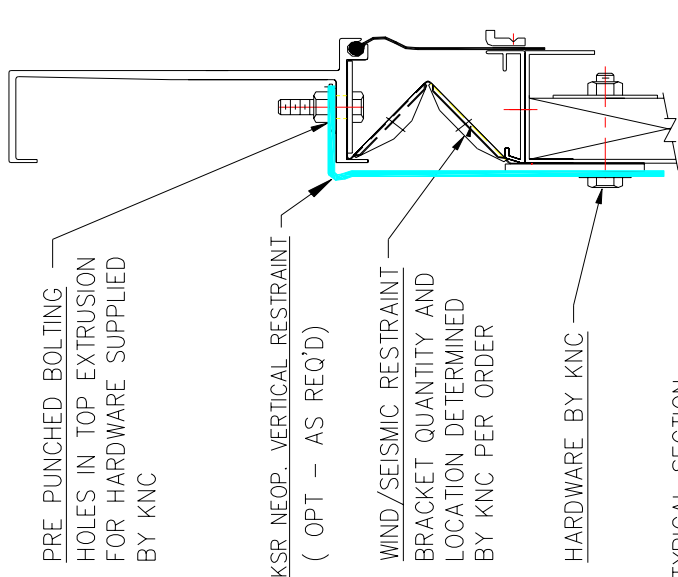
ISOLATION RAIL

ROOF CURB

### SPECIAL NOTE:

ALL UNITS SUPPLIED WITH A TROUBLE SHOOTING PACKAGE FOR LEVELING EQUIPMENT, IF REQUIRED, DURING INSTALLATION.

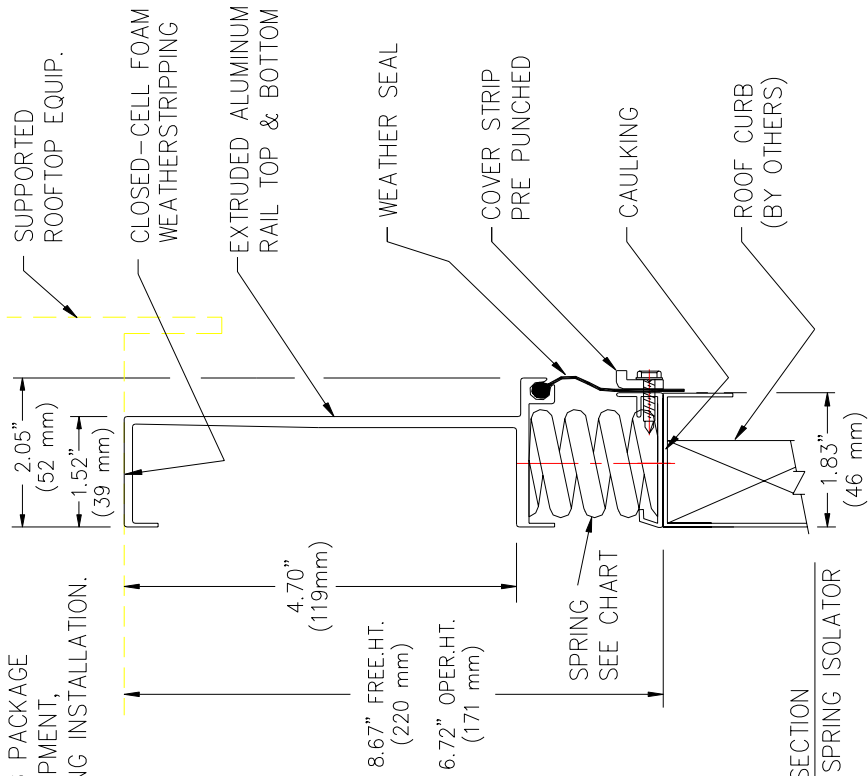
RATED LOAD LB/KG	RATED DEFL. IN/mm	SPRING FR. HT. IN/mm	SPRING 0. D. IN/mm	COLOR CODE
30/14	2.00/50	3.75/95	1.46/37	GRAY
65/30	2.00/50	3.75/95	1.46/37	BLUE
120/55	2.00/50	3.75/95	1.46/37	GREEN
205/93	2.00/50	3.75/95	1.46/37	BLACK



TYPICAL SECTION

SHOWING WIND/SEISMIC LATERAL & VERTICAL RESTRAINT

NOTE: IF SEISMIC APPLICATION IS REQUIRED CONSULT SALES REPRESENTATIVE.



TYPICAL SECTION

SHOWING SPRING ISOLATOR

## MODEL KSR-2 ISOLATION RAIL

PAGE 4 OF 4 - DRAWING # S-88.450

RELEASE DATE: 5/17/04



DUBLIN, OHIO, USA • MISSISSAUGA, ONTARIO, CANADA

Toll Free (USA only): 800-959-1229  
 International: 614-889-0480  
 Fax: 614-889-0540  
 World Wide Web: www.kineticsnoise.com  
 Email: sales@kineticsnoise.com

DOCUMENT:

P6.2.2

