

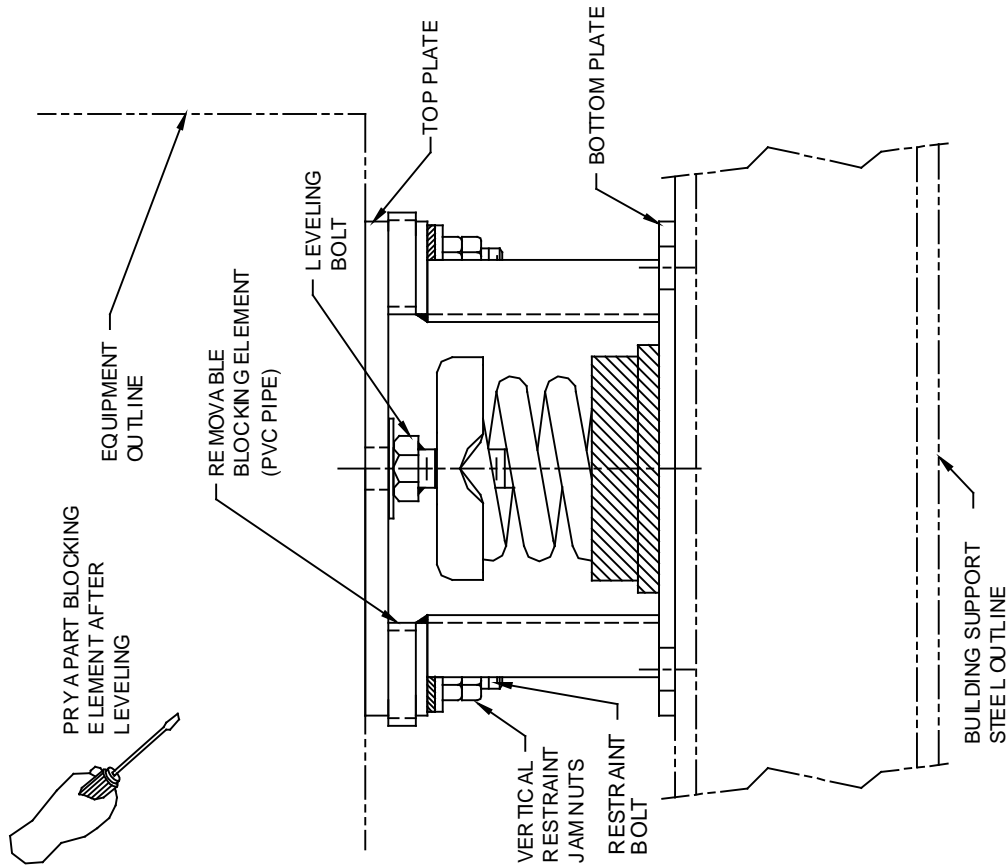
INSTALLATION INSTRUCTIONS

KINETICS MODEL (FLS & FLSS) SPRING ISOLATOR

NOTE:

KINETICS NOISE CONTROL SUGGESTS THAT MODEL FLS & FLSS ISOLATORS BE ON THE JOBSITE PRIOR TO ARRIVAL OF THE EQUIPMENT.

1. COORDINATE THE LOCATION OF EACH ISOLATOR WITH THE APPROPRIATE SUBMITTAL DRAWING AND WITH THE COLOR CODE CHART PROVIDED FOR THE SPRINGS.
2. PLACE THE ISOLATORS IN THEIR PROPER LOCATION AND ATTACH BOTTOM PLATE TO THE BUILDING SUPPORT STEEL.
3. SET THE EQUIPMENT FOOT, BRACKET OR SUPPORT STEEL ON TOP OF THE ISOLATORS AND ATTACH TO THE FLS TOP PLATE PER PROJECT SPECIFICATIONS.
4. LOOSEN THE VERTICAL RESTRAINT JAM NUTS TO THE END OF THE RESTRAINT BOLTS.
5. IN TURN, ROTATE THE LEVELING BOLTS COUNTER-CLOCKWISE SEVERAL COMPLETE TURNS ON EACH ISOLATOR UNTIL THE BLOCKING ELEMENT CAN BE REMOVED BY PRYING APART WITH A SCREWDRIVER. IT WILL BE NECESSARY TO MAKE SEVERAL CIRCUITS OF THE ISOLATORS IN ORDER TO UNIFORMLY RAISE THE EQUIPMENT. DO NOT ATTEMPT TO PLACE ALL THE WEIGHT ON ANY ONE ISOLATOR, THIS MAY RESULT IN DAMAGE TO THE ISOLATOR.
6. DO NOT ATTEMPT TO MOVE ISOLATORS Laterally WITH THE WEIGHT OF THE EQUIPMENT ON THEM. IF IT IS NECESSARY TO MOVE THE EQUIPMENT, REMOVE THE EQUIPMENT FROM THE ISOLATORS FIRST. FAILURE TO FOLLOW THIS PROCEDURE COULD RESULT IN DAMAGE TO THE ISOLATORS.
7. WHEN THE EQUIPMENT IS LEVEL PER THE EQUIPMENT MANUFACTURER'S TOLERANCE, TIGHTEN THE VERTICAL RESTRAINING NUTS FINGER TIGHT, THE BACK OFF ONE FULL TURN. LOCK THE BOLTS WITH JAM NUTS PROVIDED.
8. DISCARD ALL BLOCKING ELEMENTS.



FLSS / FLS Installation Instructions

Drawing # SS-900915

RELEASE DATE: 11/3/03



DUBLIN, OHIO, USA • MISSISSAUGA, ONTARIO, CANADA

Toll Free (USA only): 800-959-1229
 International: 614-889-0480
 Fax: 614-889-0540
 World Wide Web: www.kineticsnoise.com
 Email: sales@kineticsnoise.com

DOCUMENT:

P3.5-1

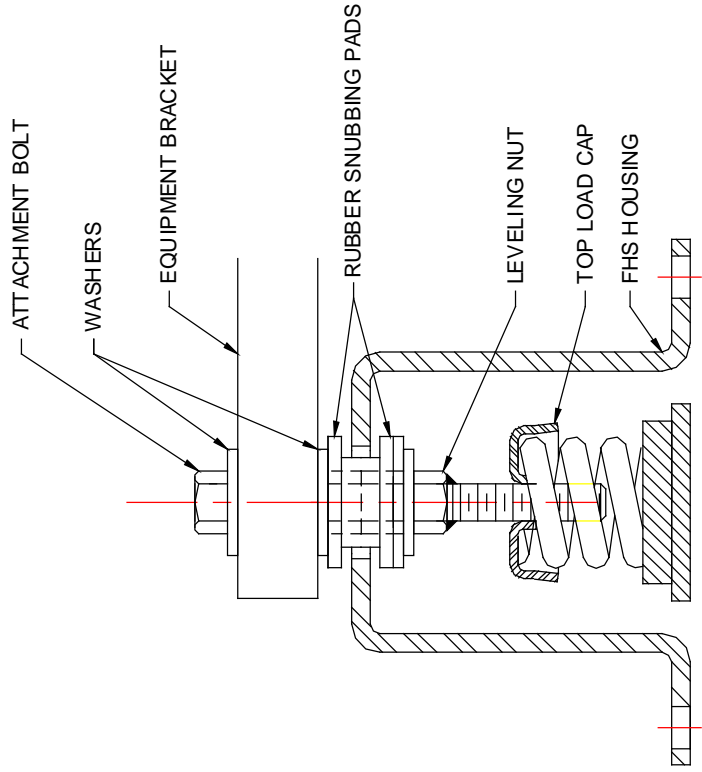


INSTALLATION INSTRUCTIONS FOR TYPE FHS KINETICS SPRING ISOLATION MOUNT

1. COORDINATE THE LOCATION OF EACH ISOLATOR WITH THE APPROPRIATE SUBMITTAL DRAWING.
2. REMOVE THE ATTACHMENT BOLT AND ONE WASHER FROM THE TOP OF THE LEVELING NUT. INSERT IT INTO THE EQUIPMENT BRACKET (IT IS NOT NECESSARY TO INSTALL THE SPRING AT THIS POINT)
3. ALIGN THE EQUIPMENT AND CENTER THE ISOLATOR

4. RAISE THE EQUIPMENT OR EQUIPMENT BASE AND INSTALL THE ISOLATOR ANCHORS IN THE FLOOR.
5. LOCATE THE SPRINGS AND LOWER THE EQUIPMENT. NOTE

6. WITH APPROXIMATELY THE DESIRED FLOOR CLEARANCE. (TAKE CARE NOT TO PUSH THE EQUIPMENT SIDEWAYS.)
7. INSTALL ANCHOR NUTS TO FIRMLY ATTACH THE FHS HOUSING TO THE FLOOR OR HOUSEKEEPING PAD.
8. LOOSELY BOLT EQUIPMENT TO THE ISOLATOR USING THE ATTACHMENT BOLT.
9. ADJUST THE ISOLATOR BY TURNING THE LEVELING NUT CCW UNTIL THE FHS HOUSING TOP PLATE IS CENTERED BETWEEN THE RUBBER SNUBBING PADS ON THE LEVELING SCREW. IN A SIMILAR MANNER, CONTINUE WITH THE ADJUSTMENT OF THE REMAINING ISOLATORS.
10. TIGHTEN THE ADJUSTMENT BOLT, THUS BOLTING THE SPRING TO THE SUPPORTED EQUIPMENT AND LOCKING THE LEVELING BOLT AGAINST TURNING
11. DO NOT ATTEMPT TO MOVE THE ISOLATORS LATERALLY WITH THE WEIGHT OF THE EQUIPMENT ON THEM. IF IT IS NECESSARY TO MOVE THE EQUIPMENT, REMOVE THE WEIGHT FROM THE ISOLATORS BY RAISING THE EQUIPMENT BEFORE MOVING.



INSTALLATION
DRAWING

FHS Installation Instructions

Drawing # SS-960892

RELEASE DATE: 11/3/03



DUBLIN, OHIO, USA • MISSISSAUGA, ONTARIO, CANADA

Toll Free (USA only): 800-959-1229
 International: 614-889-0480
 Fax: 614-889-0540
 World Wide Web: www.kineticsnoise.com
 Email: sales@kineticsnoise.com

DOCUMENT:
P3.5-2
 VISCMA
 MEMBER