

NOTES:

- 1.) EACH KSCM-2, KINETICS SEISMIC CURB ATTACHMENT BRACKET, KIT IS APPROX. EQUIVALENT TO ONE (1) 1/4-20 SAE GRADE 2 BOLT IN SHEAR.
HORIZONTAL RESTRAINT CAPACITY = 625 LBS.
- 2.) EACH KSCM-2 KIT CONTAINS TWO (2) "L" SHAPED BRACKETS OF DIFFERENT SIZE AS SHOWN ABOVE.
- 3.) AT LEAST ONE (1) KSCM-2 KIT IS REQUIRED FOR EACH SIDE OF THE CURB, SEE DRAWING S-88.071-19B.
- 4.) ATTACHMENT TO THE CURB IS BY THREE (3) No. 12-14 X 2.50 SELF DRILLING TEK SCREWS PER BRACKET.
- 5.) ATTACHMENT OF ONE BRACKET TO THE OTHER MAY BE BY WELD OR THREE (3) No. 12-14 X 0.75 SELF DRILLING TEK SCREWS.
- 6.) ATTACHMENT TO EQUIPMENT MAY BE BY WELD OR THREE (3) No. 12-14 X 0.75 SELF DRILLING TEK SCREWS SEE DRAWINGS S-88.071-19D & S-88.071-19E FOR DETAILS.

KSCM-2 MOUNTING KIT (EQUIPMENT TO CURB ATTACHMENT)

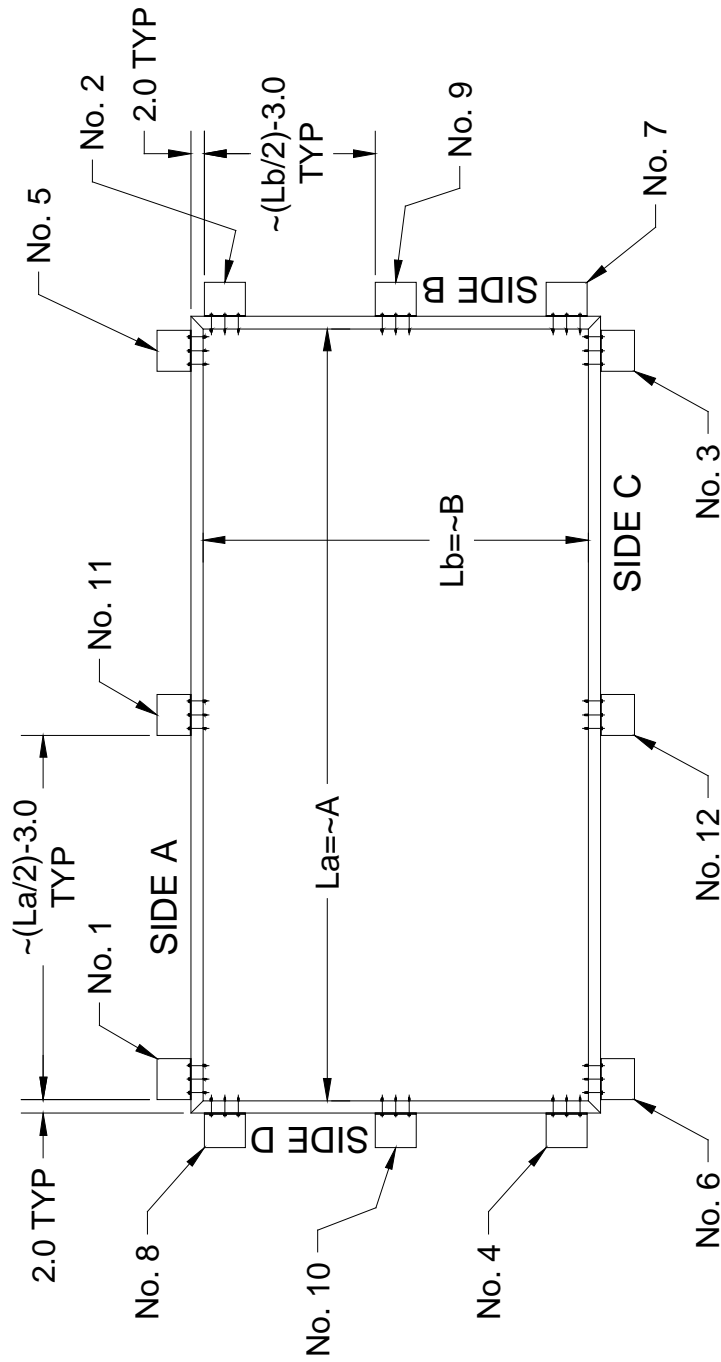
PAGE 1 OF 6 – DRAWING: S-88.071-19A

RELEASE DATE: 5/13/04



Toll Free (USA only): 800-959-1229
 International: 614-889-0480
 Fax: 614-889-0540
 World Wide Web: www.kineticsnoise.com
 Email: sales@kineticsnoise.com

DOCUMENT:
P1.3.3
 VISCMA
 MEMBER



NOTES:

- 1.) KSCM-2 SEISMIC RESTRAINT BRKT. KITS (No. 1) THRU (No. 4) ARE REQUIRED FOR EACH CURB INSTALLATION.
- 2.) ADDITIONAL KSCM-2 RESTRAINT BRKT. KITS MAY BE REQUIRED AS INDICATED BY A KINETICS SEISMIC CERTIFICATION.
- 3.) ADDITIONAL KSCM-2 RESTRAINT BRKT. KITS ARE TO BE ADDED IN PAIRS (No. 5) & (No. 6); (No. 7) & (No. 8); (No. 9) & (No. 10); AND (No. 11) & (No. 12) AS SHOWN IN THE FIGURE ABOVE.

KSCM-2 MOUNTING KIT (EQUIPMENT TO CURB ATTACHMENT)

PAGE 2 OF 6 – DRAWING: S-88.071-19B

RELEASE DATE: 5/13/04

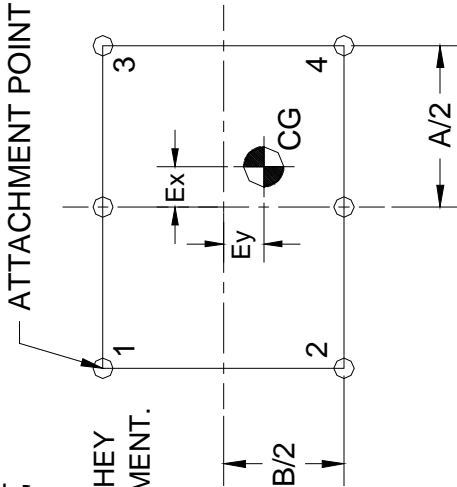


Toll Free (USA only): 800-959-1229
 International: 614-889-0480
 Fax: 614-889-0540
 World Wide Web: www.kineticsnoise.com
 Email: sales@kineticsnoise.com

DOCUMENT:
P1.3.3
 VISCMA
 MEMBER

KSCM-2 SEISMIC RESTRAINT KIT INSTALLATION INSTRUCTIONS:

- 1.) SHOWN AT THE RIGHT IS A COPY OF THE FIGURE THAT APPEARS IN THE TOP LEFT HAND QUADRANT OF THE "KINETICS SEISMIC CERTIFICATION" FOR THE PIECE OF EQUIPMENT TO BE MOUNTED. THE POINTS 1, 2, 3, AND 4 INDICATE THE APPROX. POSITIONS OF THE FIRST KSCM-2 KITS. THEY ARE LOCATED OFF OF THE GEOMETRIC CENTER LINES FOR THE EQUIPMENT. 2.) TYPICALLY (A) IS THE LOCATING DIMENSION ALONG THE LENGTH OF THE EQUIPMENT, AND (B) IS THE LOCATING DIMENSION ACROSS THE WIDTH OF THE EQUIPMENT. THESE DIMENSIONS, AS APPLIED, TO THE KSCM-2 KITS ARE DEFINED IN S-88.071-19B. A WILL BE APPROX. EQUAL TO La, AND B WILL BE APPROX. EQUAL TO Lb AS SHOWN IN S-88.071-19B.
- 3.) THE C.G. LOCATION FOR THE EQUIPMENT IS LOCATED OFF OF THE GEOMETRIC CENTER OF THE EQUIPMENT BY (Ex) ALONG THE LENGTH OF THE EQUIPMENT, AND (Ey) ACROSS THE WIDTH OF THE EQUIPMENT.
- 4.) MEASURE AND MARK THE LOCATIONS OF THE KSCM-2 RESTRAINT KITS ON THE CURB USING S-88.071-19B AS A GUIDE. THERE MUST BE AT LEAST ONE KSCM-2 KIT FOR EACH SIDE OF THE CURB. WHEN LOCATED ACCORDING TO S-88.071-19B, THE KSCM-2 SEISMIC BRACKET KITS WILL ALLOW THE OPTIMUM LOAD DISTRIBUTION IN ALL SIDES OF THE CURB.
- 5.) DEPENDING ON THE CONSTRUCTION OF THE EQUIPMENT THE KSCM-2 KITS MAY BE INSTALLED BEFORE OR AFTER THE EQUIPMENT IS SET IN PLACE, SEE S-88.071-19D & S-88.071-19E FOR EXAMPLES. IN SOME CASES, ONE OF THE KSCM-2 BRACKETS MUST BE INSTALLED BEFORE THE EQUIPMENT IS SET IN PLACE. THE CONSTRUCTION OF THE EQUIPMENT MUST BE KNOWN AND STUDIED BEFORE SETTING THE TO ENSURE PROPER INSTALLATION OF THE KSCM-2 BRACKETS.
- 6.) ATTACHMENT OF THE KSCM-2 BRACKET TO THE CURB IS ACCOMPLISHED WITH THE THREE (3) No. 12-14 X 2.50 SELF-DRILLING TEK SCREWS. **TO BE EFFECTIVE, THE THREADED PORTION OF THESE SCREWS MUST PASS THROUGH THE WOODEN NAILER, AND THE SHEET METAL OF THE CURB SIDE WALL!**



CONTINUED ON S-88.071-19C SHT 2.

KSCM-2 MOUNTING KIT (EQUIPMENT TO CURB ATTACHMENT)

PAGE 3 OF 6 – DRAWING: S-88.071-19C SHEET 1

RELEASE DATE: 5/13/04



DUBLIN, OHIO, USA • MISSISSAUGA, ONTARIO, CANADA

Toll Free (USA only): 800-959-1229
 International: 614-889-0480
 Fax: 614-889-0540
 World Wide Web: www.kineticsnoise.com
 Email: sales@kineticsnoise.com

DOCUMENT:
P1.3.3
 VISCMA MEMBER

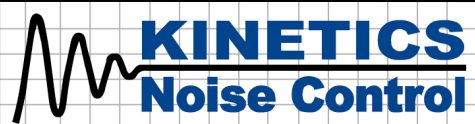
KSCM-2 SEISMIC RESTRAINT KIT INSTALLATION INSTRUCTIONS CONT'D:

- 7.) WHEN ATTACHING THE TWO KSCM-2 BRACKETS TOGETHER, USE **THREE (3) No. 12-14 X 0.75 SELF-DRILLING TEK SCREWS**. OPTIONAL ATTACHEMENT MAY BE MADE WITH **THREE (3) 1/8 X 1.0 WELDS**. SEE S-88.071-19D & S-88.071-19E FOR DETAILED EXAMPLES.
- 8.) THE EQUIPMENT ATTACHMENT IS MADE WITH **THREE (3) No. 12-14 X 0.75 SELF DRILLING TEK SCREWS**. OPTIONAL ATTACHMENT IS MADE BY **THREE (3) 1/8 X 1.0 WELDS**. SEE S-88.071-19D & S-88.071-19E FOR DETAILED EXAMPLES.
- 9.) SEAL ALL EQUIPMENT PENETRATIONS WITH A GOOD RTV CAULKING COMPOUND, BY OTHERS.
- 10.) **WARNING:** WHEN ATTACHING TO EQUIPMENT USING SELF DRILLING TEK SCREWS, BE SURE THAT ELECTRICAL & CONTROL WIRES & CONDUITS, AND FLUIDS HOSES ARE NOT IN THE PATHS OF THE TEK SCREWS!
- 11.) **CAUTION:** DO NOT BLOCK EQUIPMENT ACCESS & MAINTENANCE DOORS WITH KSCM-2 BRACKETS!

KSCM-2 MOUNTING KIT (EQUIPMENT TO CURB ATTACHMENT)

PAGE 4 OF 6 – DRAWING: S-88.071-19C SHEET 2

RELEASE DATE: 5/13/04



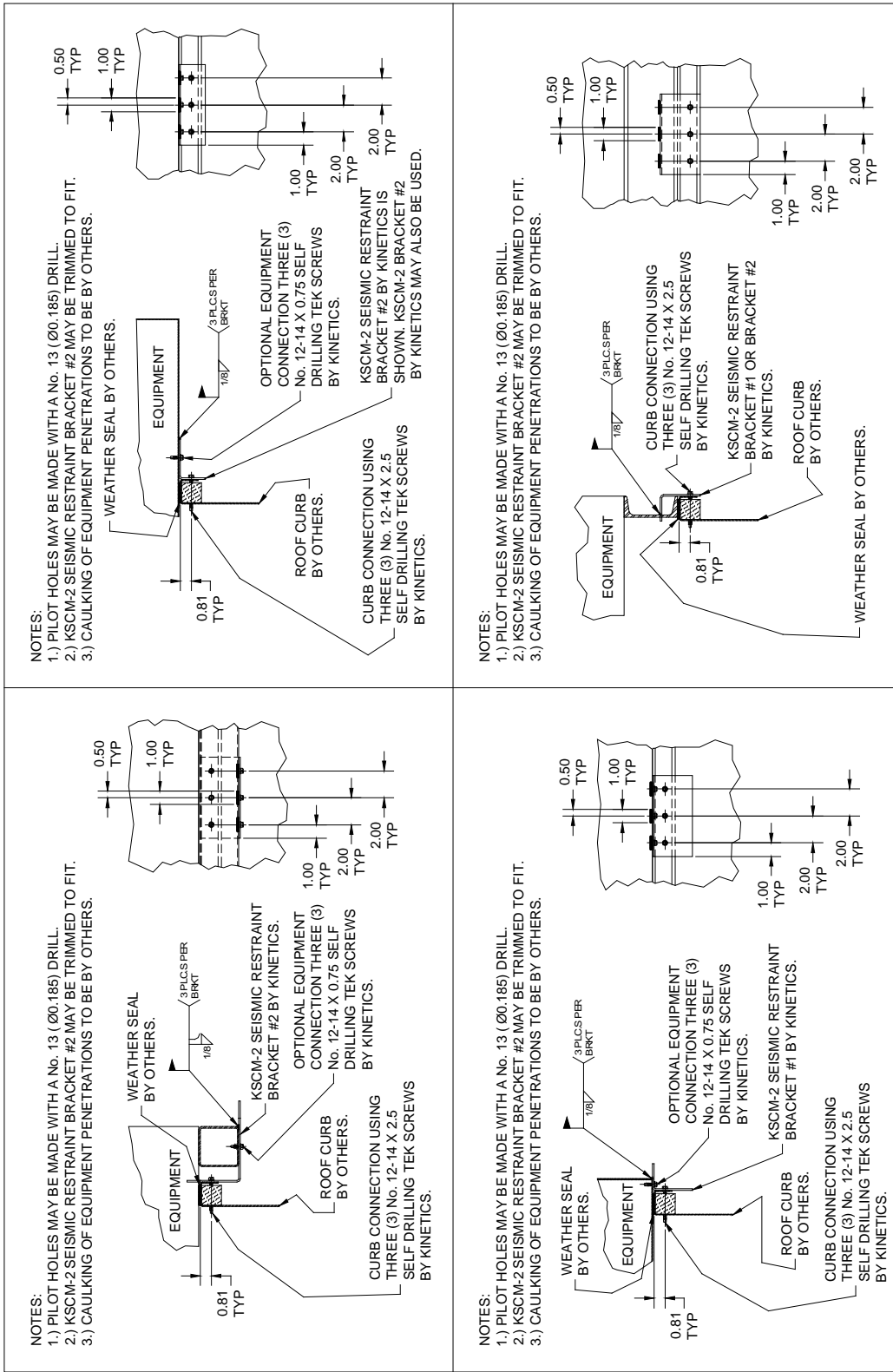
DUBLIN, OHIO, USA • MISSISSAUGA, ONTARIO, CANADA

Toll Free (USA only): 800-959-1229
International: 614-889-0480
Fax: 614-889-0540
World Wide Web: www.kineticsnoise.com
Email: sales@kineticsnoise.com

DOCUMENT:

P1.3.3





KSCM-2 MOUNTING KIT (EQUIPMENT TO CURB ATTACHMENT)

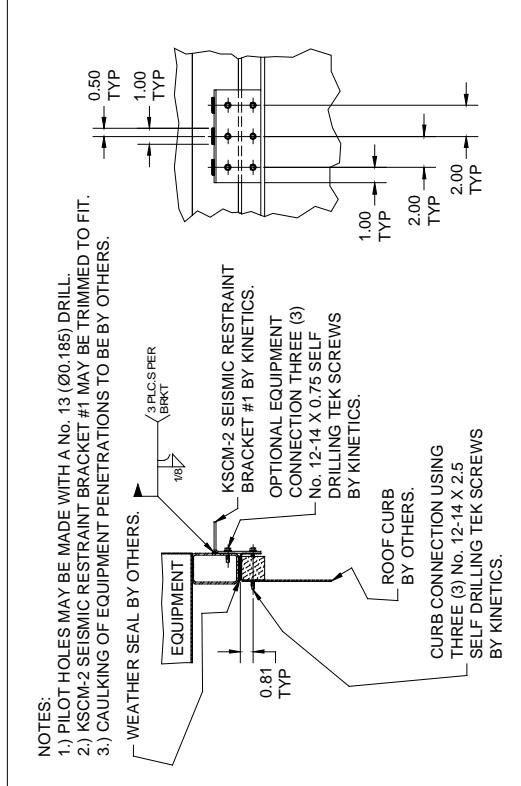
PAGE 5 OF 6 – DRAWING: S-88.071-19D

RELEASE DATE: 5/13/04

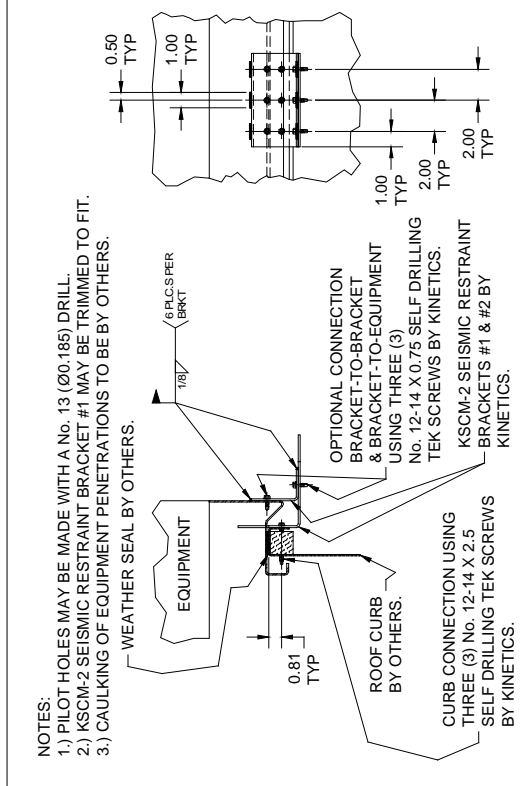


Toll Free (USA only): 800-959-1229
 International: 614-889-0480
 Fax: 614-889-0540
 World Wide Web: www.kineticsnoise.com
 Email: sales@kineticsnoise.com

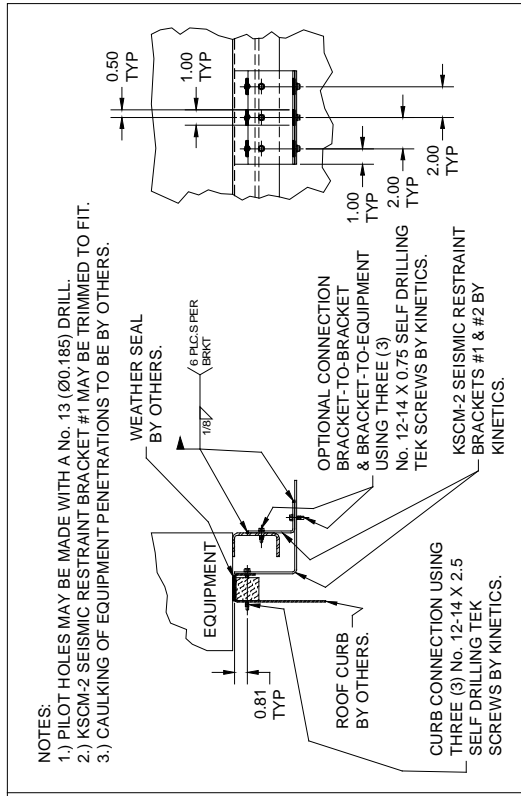
DOCUMENT:
P1.3.3
 VISCMA MEMBER



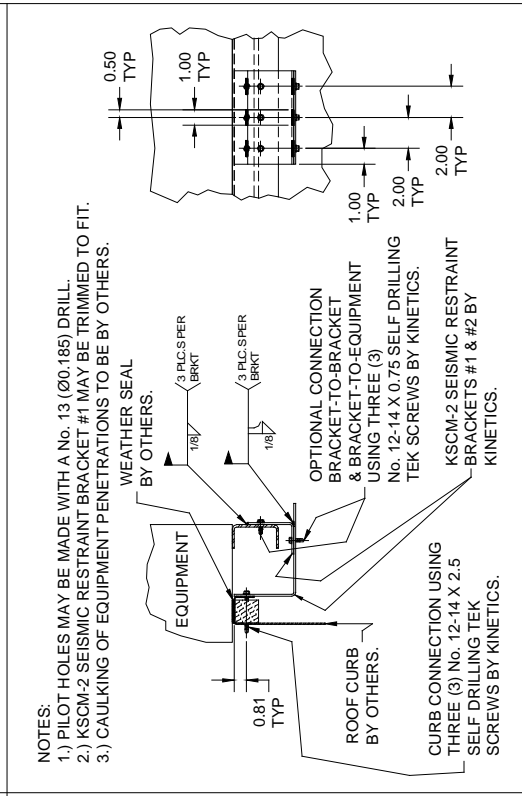
NOTES:
 1.) PILOT HOLES MAY BE MADE WITH A No. 13 (Ø0.185) DRILL.
 2.) KSCM-2 SEISMIC RESTRAINT BRACKET #1 MAY BE TRIMMED TO FIT.
 3.) CAULKING OF EQUIPMENT PENETRATIONS TO BE BY OTHERS.



NOTES:
 1.) PILOT HOLES MAY BE MADE WITH A No. 13 (Ø0.185) DRILL.
 2.) KSCM-2 SEISMIC RESTRAINT BRACKET #1 MAY BE TRIMMED TO FIT.
 3.) CAULKING OF EQUIPMENT PENETRATIONS TO BE BY OTHERS.



NOTES:
 1.) PILOT HOLES MAY BE MADE WITH A No. 13 (Ø0.185) DRILL.
 2.) KSCM-2 SEISMIC RESTRAINT BRACKET #1 MAY BE TRIMMED TO FIT.
 3.) CAULKING OF EQUIPMENT PENETRATIONS TO BE BY OTHERS.



NOTES:
 1.) PILOT HOLES MAY BE MADE WITH A No. 13 (Ø0.185) DRILL.
 2.) KSCM-2 SEISMIC RESTRAINT BRACKET #1 MAY BE TRIMMED TO FIT.
 3.) CAULKING OF EQUIPMENT PENETRATIONS TO BE BY OTHERS.

KSCM-2 MOUNTING KIT (EQUIPMENT TO CURB ATTACHMENT)

PAGE 6 OF 6 – DRAWING: S-88.071-19E

RELEASE DATE: 5/13/04



DUBLIN, OHIO, USA • MISSISSAUGA, ONTARIO, CANADA

Toll Free (USA only): 800-959-1229
 International: 614-889-0480
 Fax: 614-889-0540
 World Wide Web: www.kineticsnoise.com
 Email: sales@kineticsnoise.com

DOCUMENT:
P1.3.3
 VISCMA MEMBER