

**NOTES:**

- 1.) EACH KSCM-1, KINETICS SEISMIC CURB ATTACHMENT BRACKET, KIT IS APPROX. EQUIVALENT TO ONE (1) 1/4-20 SAE GRADE 2 BOLT IN SHEAR.  
**HORIZONTAL RESTRAINT CAPACITY = 625 LBS.**
- 2.) AT LEAST ONE (1) KSCM-1 KIT IS REQUIRED FOR EACH SIDE OF THE CURB, SEE DRAWING S-88.071-18B.
- 3.) ATTACHMENT TO THE CURB IS BY THREE (3) No. 12-14 X 2.50 SELF DRILLING TEK SCREWS PER BRACKET.
- 4.) ATTACHMENT TO EQUIPMENT MAY BE BY WELD OR THREE (3) No. 12-14 X 0.75 SELF DRILLING TEK SCREWS SEE DRAWING S-88.071-18D DETAILS.

**KSCM-1 MOUNTING KIT (EQUIPMENT TO CURB ATTACHMENT)**

PAGE 1 OF 5 – DRAWING: S-88.071-18A

RELEASE DATE: 5/13/04

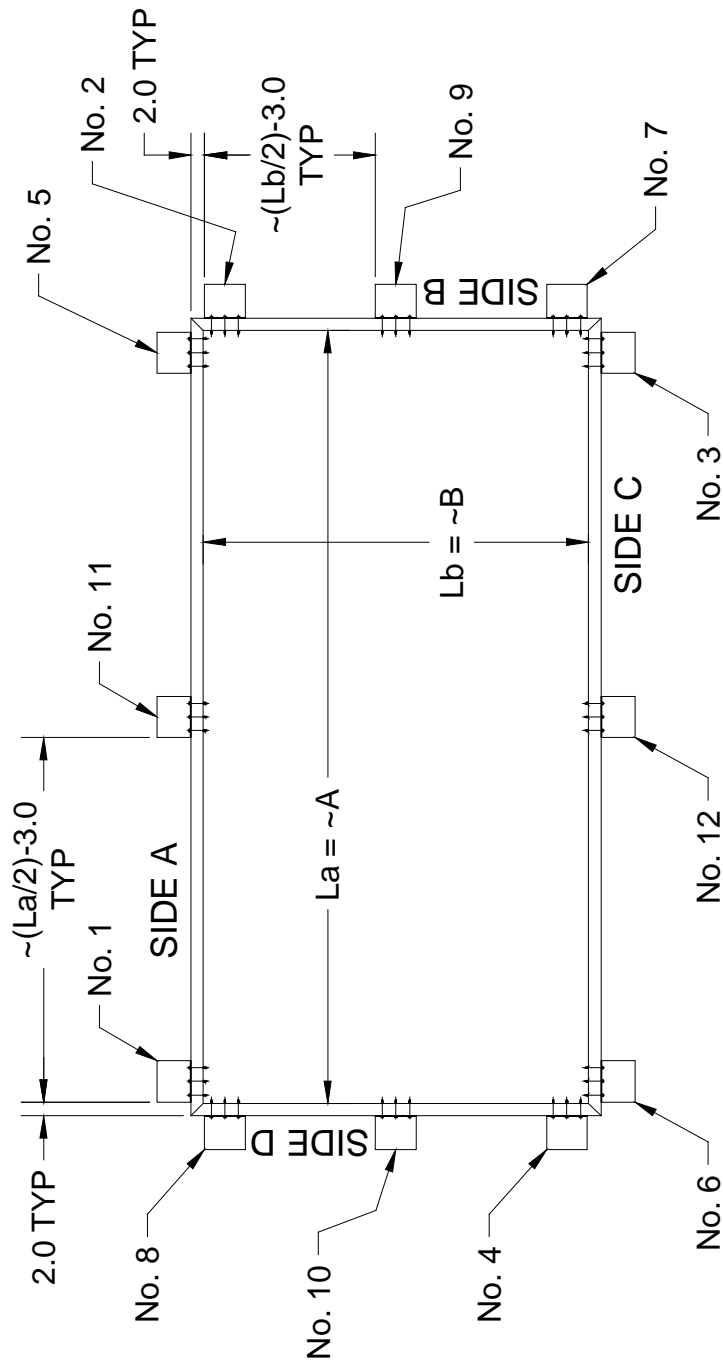
**KINETICS**  
Noise Control

DUBLIN, OHIO, USA • MISSISSAUGA, ONTARIO, CANADA

Toll Free (USA only): 800-959-1229  
 International: 614-889-0480  
 Fax: 614-889-0540  
 World Wide Web: [www.kineticsnoise.com](http://www.kineticsnoise.com)  
 Email: [sales@kineticsnoise.com](mailto:sales@kineticsnoise.com)

DOCUMENT:  
**P1.3.2**

**VISCMA**  
MEMBER



- NOTES:**
- 1.) KSCM-1 SEISMIC RESTRAINT BRACKETS (No. 1) THRU (No. 4) ARE REQUIRED FOR EACH CURB INSTALLATION.
  - 2.) ADDITIONAL KSCM-1 RESTRAINT BRACKETS MAY BE REQUIRED AS INDICATED BY A KINETICS SEISMIC CERTIFICATION.
  - 3.) ADDITIONAL KSCM-1 RESTRAINT BRACKETS ARE TO BE ADDED IN PAIRS (No. 5) & (No. 6); (No. 7) & (No. 8); (No. 9) & (No. 10); AND (No. 11) & (No. 12) AS SHOWN IN THE FIGURE ABOVE.

**KSCM-1 MOUNTING KIT (EQUIPMENT TO CURB ATTACHMENT)**

PAGE 2 OF 5 – DRAWING: S-88.071-18B

RELEASE DATE: 5/13/04



DUBLIN, OHIO, USA • MISSISSAUGA, ONTARIO, CANADA

Toll Free (USA only): 800-959-1229  
 International: 614-889-0480  
 Fax: 614-889-0540  
 World Wide Web: www.kineticsnoise.com  
 Email: sales@kineticsnoise.com

DOCUMENT:  
**P1.3.2**



## KSCM-1 SEISMIC RESTRAINT KIT INSTALLATION INSTRUCTIONS:

- 1.) SHOWN AT THE RIGHT IS A COPY OF THE FIGURE THAT APPEARS IN THE TOP LEFT HAND QUADRANT OF THE "KINETICS SEISMIC CERTIFICATION" FOR THE PIECE OF EQUIPMENT TO BE MOUNTED. THE POINTS 1, 2, 3, AND 4 INDICATE THE APPROX. POSITIONS OF THE FIRST KSCM-1 KITS. THEY ARE LOCATED OFF OF THE GEOMETRIC CENTER LINES FOR THE EQUIPMENT.
- 2.) TYPICALLY (A) IS THE LOCATING DIMENSION ALONG THE LENGTH OF THE EQUIPMENT, AND (B) IS THE LOCATING DIMENSION ACROSS THE WIDTH OF THE EQUIPMENT. THESE DIMENSIONS, AS APPLIED, TO THE KSCM-1 KITS ARE DEFINED IN S-88.071-18B. A WILL BE APPROX. EQUAL TO La, AND B WILL BE APPROX. EQUAL TO Lb AS SHOWN IN S-88.071-18B.
- 3.) THE C.G. LOCATION FOR THE EQUIPMENT IS LOCATED OFF OF THE GEOMETRIC CENTER OF THE EQUIPMENT BY (Ex) ALONG THE LENGTH OF THE EQUIPMENT, AND (Ey) ACROSS THE WIDTH OF THE EQUIPMENT.
- 4.) MEASURE AND MARK THE LOCATIONS OF THE KSCM-1 RESTRAINT KITS ON THE CURB USING S-88.071-18B AS A GUIDE. THERE MUST BE AT LEAST ONE KSCM-1 KIT FOR EACH SIDE OF THE CURB. WHEN LOCATED ACCORDING TO S-88.071-18B, THE KSCM-1 SEISMIC BRACKET KITS WILL ALLOW THE OPTIMUM LOAD DISTRIBUTION IN ALL SIDES OF THE CURB.
- 5.) DEPENDING ON THE CONSTRUCTION OF THE EQUIPMENT THE KSCM-1 KITS MAY BE INSTALLED BEFORE OR AFTER THE EQUIPMENT IS SET IN PLACE, SEE S-88.071-18D FOR EXAMPLES. IN SOME CASES, ONE OF THE KSCM-1 BRACKETS MUST BE INSTALLED BEFORE THE EQUIPMENT IS SET IN PLACE. THE CONSTRUCTION OF THE EQUIPMENT MUST BE KNOWN AND STUDIED BEFORE SETTING THE TO ENSURE PROPER INSTALLATION OF THE KSCM-1 BRACKETS.
- 6.) ATTACHMENT OF THE KSCM-1 BRACKET TO THE CURB IS ACCOMPLISHED WITH THE THREE (3) No. 12-14 X 2.50 SELF-DRILLING TEK SCREWS. **TO BE EFFECTIVE, THE THREADED PORTION OF THESE SCREWS MUST PASS THROUGH THE WOODEN NAILER, AND THE SHEET METAL OF THE CURB SIDE WALL!** CONTINUED ON S-88.071-18C SHT 2.

## KSCM-1 MOUNTING KIT (EQUIPMENT TO CURB ATTACHMENT)

PAGE 3 OF 5 – DRAWING: S-88.071-18C SHEET 1

RELEASE DATE: 5/13/04



DUBLIN, OHIO, USA • MISSISSAUGA, ONTARIO, CANADA

Toll Free (USA only): 800-959-1229  
 International: 614-889-0480  
 Fax: 614-889-0540  
 World Wide Web: www.kineticsnoise.com  
 Email: sales@kineticsnoise.com

DOCUMENT:

P1.3.2



**KSCM-1 SEISMIC RESTRAINT KIT INSTALLATION INSTRUCTIONS CONT'D:**

- 7.) THE EQUIPMENT ATTACHMENT IS MADE WITH **THREE (3) No. 12-14 X 0.75 SELF DRILLING TEK SCREWS.**  
OPTIONAL ATTACHMENT IS MADE BY **THREE (3) 1/8 X 1.0 WELDS.** SEE S-88.071-18D FOR DETAILED EXAMPLES.
- 8.) SEAL ALL EQUIPMENT PENETRATIONS WITH A GOOD RTV CAULKING COMPOUND, BY OTHERS.
- 9.) **WARNING:** WHEN ATTACHING TO EQUIPMENT USING SELF DRILLING TEK SCREWS, BE SURE THAT ELECTRICAL & CONTROL WIRES & CONDUITS, AND FLUIDS HOSES ARE NOT IN THE PATHS OF THE TEK SCREWS!
- 10.) **CAUTION:** DO NOT BLOCK EQUIPMENT ACCESS & MAINTENANCE DOORS WITH KSCM-1 BRACKETS!

**KSCM-1 MOUNTING KIT (EQUIPMENT TO CURB)**

PAGE 4 OF 5 – DRAWING: S-88.071-18C SHEET 2

RELEASE DATE: 5/1304



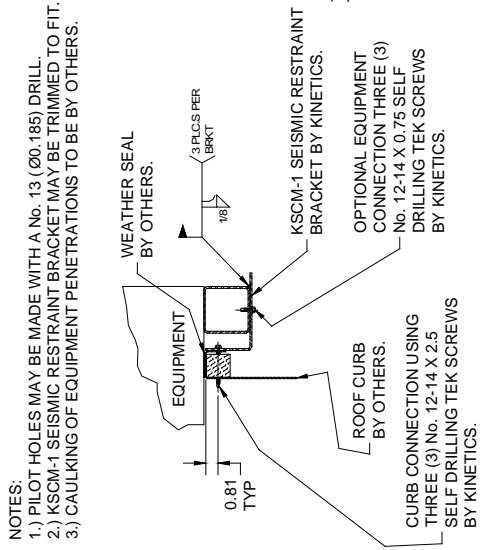
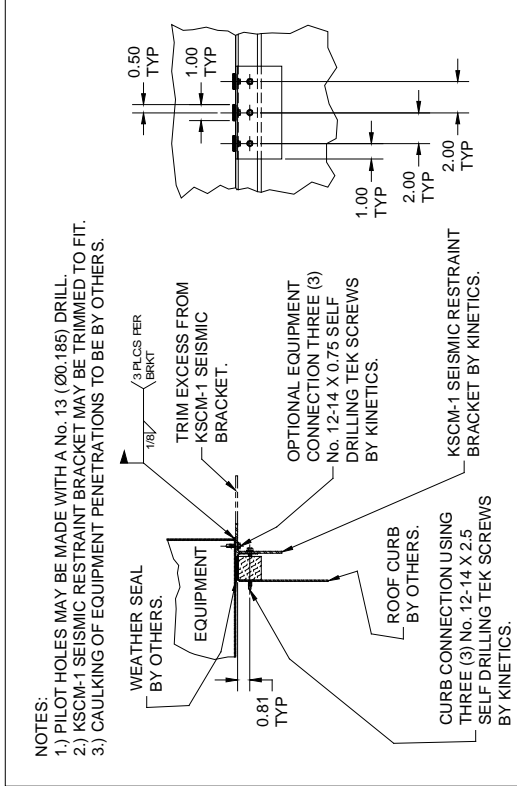
DUBLIN, OHIO, USA • MISSISSAUGA, ONTARIO, CANADA

Toll Free (USA only): 800-959-1229  
International: 614-889-0480  
Fax: 614-889-0540  
World Wide Web: [www.kineticsnoise.com](http://www.kineticsnoise.com)  
Email: [sales@kineticsnoise.com](mailto:sales@kineticsnoise.com)

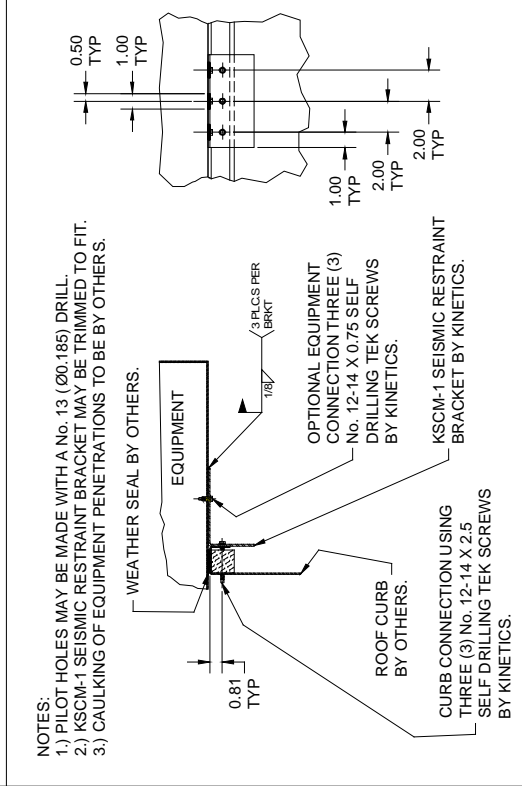
DOCUMENT:

**P1.3.2**





NOTES:  
 1.) PILOT HOLES MAY BE MADE WITH A No. 13 (Ø0.185) DRILL.  
 2.) KSCM-1 SEISMIC RESTRAINT BRACKET MAY BE TRIMMED TO FIT.  
 3.) CAULKING OF EQUIPMENT PENETRATIONS TO BE BY OTHERS.



NOTES:  
 1.) PILOT HOLES MAY BE MADE WITH A No. 13 (Ø0.185) DRILL.  
 2.) KSCM-1 SEISMIC RESTRAINT BRACKET MAY BE TRIMMED TO FIT.  
 3.) CAULKING OF EQUIPMENT PENETRATIONS TO BE BY OTHERS.

## KSCM-1 MOUNTING KIT (EQUIPMENT TO CURB ATTACHMENT)

PAGE 5 OF 5 – DRAWING: S-88.071-18D

RELEASE DATE: 5/13/04



Toll Free (USA only): 800-959-1229  
 International: 614-889-0480  
 Fax: 614-889-0540  
 World Wide Web: [www.kineticsnoise.com](http://www.kineticsnoise.com)  
 Email: [sales@kineticsnoise.com](mailto:sales@kineticsnoise.com)

DOCUMENT:  
**P1.3.2**

VISCMA MEMBER