

TG Bolt Isolation Grommet Submittal Data

The Kinetics Noise Control model **TG Bolt Isolation Grommet** is used primarily to fill the excess clearance in the anchor/bolt holes in equipment/isolator mounting plates/feet. The codes and best practice require that the diameter of an anchor/bolt hole not exceed the diameter of the anchor/bolt by more than **1/8 inch**. In many cases, the seismic analysis will indicate that an anchor/bolt of smaller size than that provided for in the mounting plate/foot may be used for a specific application. The Kinetics Noise Control model **TG Bolt Isolation Grommet** may be used in these cases to bring the anchor/bolt hole clearance into line with the code and best practice recommended clearance for the smaller anchor/bolt size. In order to perform satisfactorily in this type of application, the material used for the model **TG Bolt Isolation Grommet** is **80 Durometer Neoprene**. A typical Kinetics Noise Control model **TG Bolt Isolation Grommet** is shown below in Figure P10.2.3-1. The dimensional data for the product family line is given in Tables P10.2.3-1 and P10.2.3-2. A typical **TG Bolt Isolation Grommet Installation** is shown in Figure P10.2.3-2.

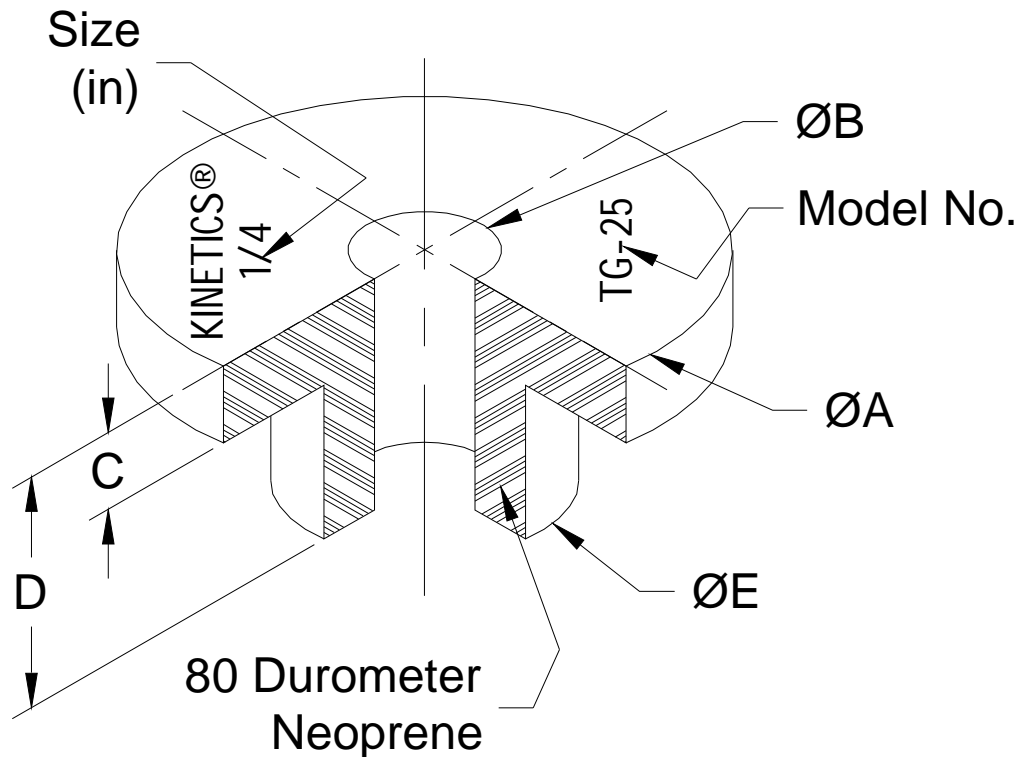


Figure P10.2.3-1: Typical Model TG Bolt Isolation Grommet.

TG BOLT ISOLATION GROMMET SUBMITTAL DATA

PAGE 1 OF 3

RELEASE DATE: 9/20/04



DUBLIN, OHIO, USA • MISSISSAUGA, ONTARIO, CANADA

Toll Free (USA only): 800-959-1229
 International: 614-889-0480
 Fax: 614-889-0540
 World Wide Web: www.kineticsnoise.com
 Email: sales@kineticsnoise.com

DOCUMENT:
P10.2.3
 VISCMA
 MEMBER

Table P10.2.3-1: TG Bolt Isolation Grommet English Dimensional Data.

Model	Anchor/ Bolt Size (in)	ΦA (in)	ΦB (in)	C (in)	D (in)	ΦE (in)
TG-25	1/4	1.00	0.25	0.13	0.38	0.50
TG-38	3/8	1.25	0.38	0.13	0.50	0.63
TG-50	1/2	1.63	0.50	0.13	0.50	0.75
TG-63	5/8	2.00	0.63	0.19	0.63	0.88
TG-75	3/4	2.25	0.75	0.19	0.63	1.00
TG-100	1	2.75	1.00	0.25	0.88	1.25
TG-125	1-1/4	3.25	1.25	0.25	0.88	1.50
TG-150	1-1/2	3.75	1.50	0.25	1.00	1.75

Table P10.2.3-2: TG Bolt Isolation Grommet Metric Dimensional Data.

Model	Anchor/ Bolt Size (in)	ΦA (mm)	ΦB (mm)	C (mm)	D (mm)	ΦE (mm)
TG-25	1/4	25.4	6.4	3.2	9.5	12.7
TG-38	3/8	31.8	9.5	3.2	12.7	15.9
TG-50	1/2	41.3	12.7	3.2	12.7	19.1
TG-63	5/8	50.8	15.9	4.8	15.9	22.2
TG-75	3/4	57.2	19.1	4.8	15.9	25.4
TG-100	1	69.9	25.4	6.4	22.2	31.8
TG-125	1-1/4	82.6	31.8	6.4	22.2	38.1
TG-150	1-1/2	95.3	38.1	6.4	25.4	44.4

TG BOLT ISOLATION GROMMET SUBMITTAL DATA

PAGE 2 OF 3

RELEASE DATE: 9/20/04



DUBLIN, OHIO, USA • MISSISSAUGA, ONTARIO, CANADA

Toll Free (USA only): 800-959-1229
 International: 614-889-0480
 Fax: 614-889-0540
 World Wide Web: www.kineticsnoise.com
 Email: sales@kineticsnoise.com

DOCUMENT:
P10.2.3
 VISCMA
 MEMBER

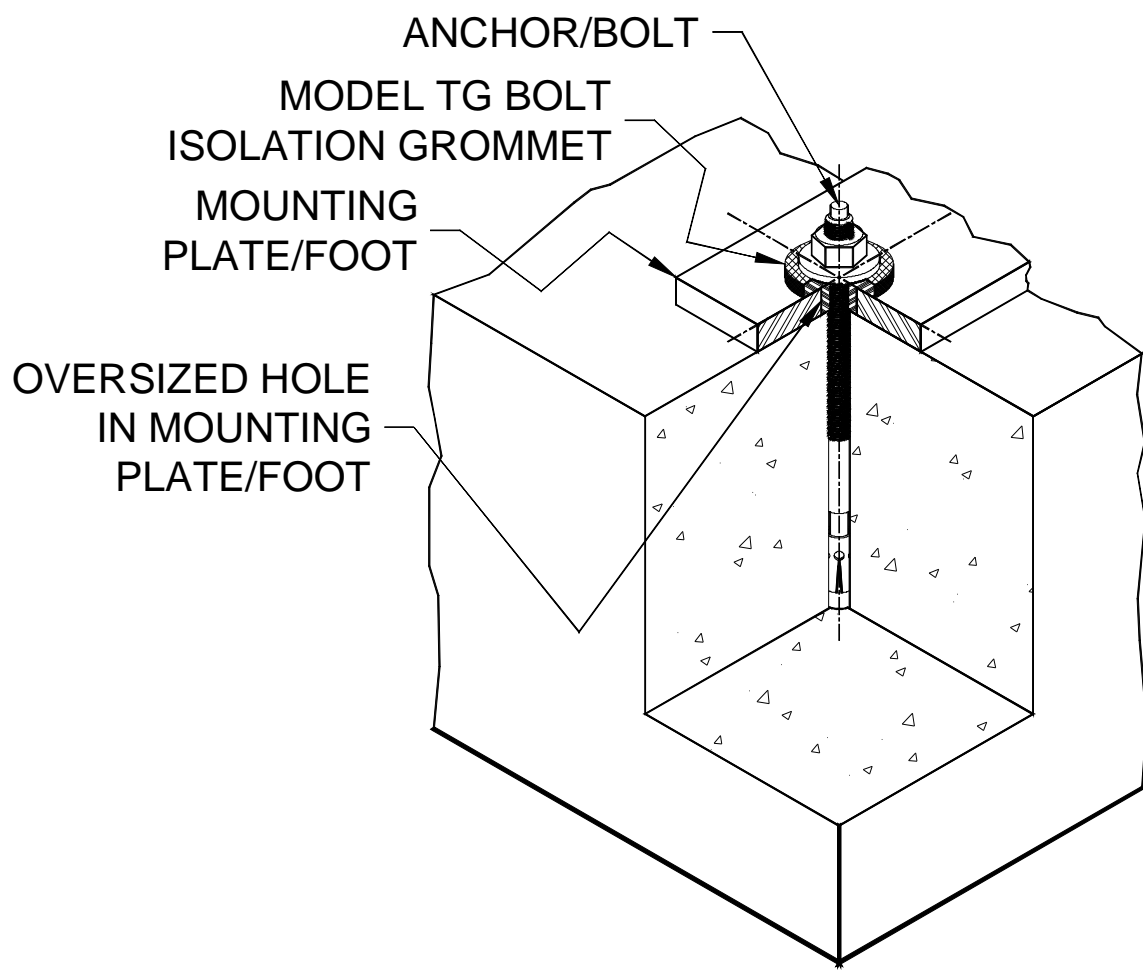


Figure P10.2.3-2: Typical TG Bolt Isolation Grommet Installation.

TG BOLT ISOLATION GROMMET SUBMITTAL DATA

PAGE 3 OF 3

RELEASE DATE: 9/20/04

KINETICS
Noise Control

DUBLIN, OHIO, USA • MISSISSAUGA, ONTARIO, CANADA

Toll Free (USA only): 800-959-1229
International: 614-889-0480
Fax: 614-889-0540
World Wide Web: www.kineticsnoise.com
Email: sales@kineticsnoise.com

DOCUMENT:
P10.2.3

VISCMA
MEMBER