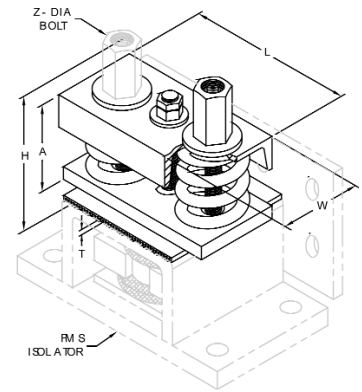
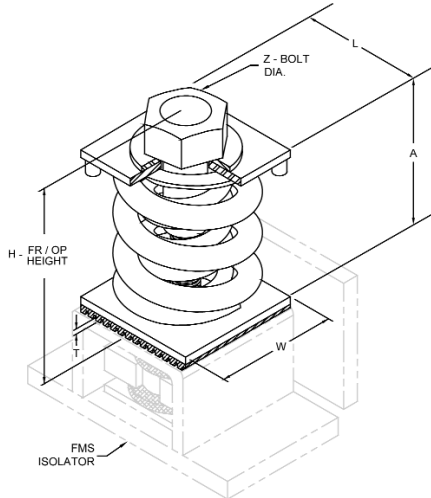
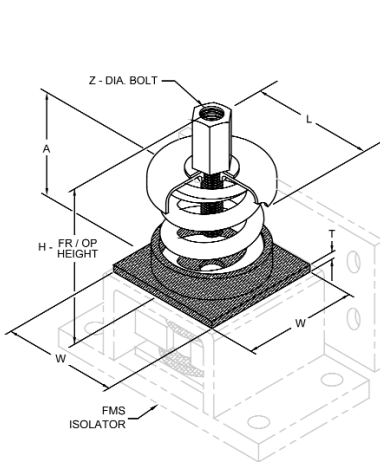


## FMS Coil Assemblies

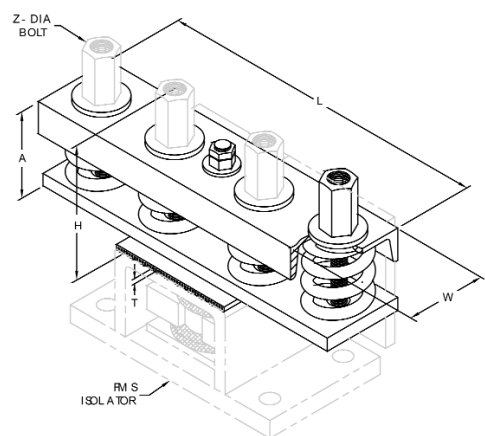
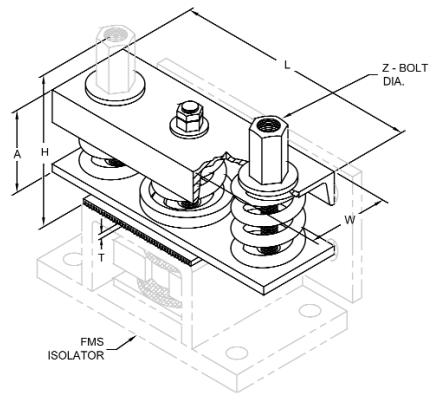
COIL TYPE	A	H (free)	H (op)	L	W	Z	COIL TYPE	A	H (free)	H (op)	L	W	Z
1-35/805	3.55	5.37	4.37	2.07	2.63	0.38	2-9100/13500	8.88	10.21	8.21	17.50	7.00	1.00
1-250/3500	4.81	7.14	5.14	3.45	3.88	0.75	2-14000/18000	8.88	10.21	8.21	24.00	7.00	1.00
1-740/1400	3.72	5.56	4.56	5.25	2.63	0.38	4-100/1600	11.55	12.30	8.30	6.00	6.00	1.00
1-3400/7000	5.56	7.89	6.89	8.25	4.00	0.75	4-2250/5800	13.18	13.93	9.93	8.00	8.00	1.00
1-3750/10500	5.56	7.89	6.89	10.38	4.00	0.75	4-1500/3200	11.55	12.80	8.80	13.75	7.00	1.00
1-9860/14000	5.56	7.89	6.89	15.50	4.00	0.75	4-3000/4800	11.55	12.80	8.80	18.50	10.00	1.00
2-100/1975	6.63	7.43	5.43	3.94	4.38	0.38	4-5500/11600	13.18	14.44	10.44	19.00	5.00	1.00
2-2000/4500	8.43	9.18	7.18	5.00	5.00	0.75	4-5000/6400	11.55	12.80	8.80	26.00	7.00	1.00
2-1990/4000	9.18	9.93	7.93	10.00	5.00	0.75	4-11700/17400	13.18	14.44	10.44	27.00	10.00	1.00
2-5000/9000	8.88	10.21	8.21	13.38	7.00	1.00	4-17800/23200	13.18	14.44	10.44	36.00	10.00	1.00



1-35/805 used on AA,A,B	2-100/1975 used on B,C,D
1-250/3500 used on A,B,C,D,E	

2-2000/4500 used on C,D,E	4-100/1600 used on C,D
	4-2250/5800 used on E,F,G

1-740/1400 used on A,B	2-1990/4000 used on B,C,D,E	4-1500/3200 used on C,D,E
1-3400/7000 used on C,D,E,F,G	2-5000/9000 used on C,D,E,F,G	4-5500/11600 used on E,F,G



1-3750/10500 used on C,D,E,F,G	2-9100/13500 used on D,E,F,G	4-3000/4800 used on C,D,E,F,G
		4-11700/17400 used on E,F,G

1-9860/14000 used on E,F,G	2-14000/18000 used on E,F,G	4-5000/6400 used on C,D,E,F,G
		4-17800/23200 used on E,F,G