

# KINETICS®

## Restrained Spring Isolators Model FLSS 1 and 2



### Description

Kinetics Model FLSS Seismic Control Restrained Spring Vibration Isolators consist of free-standing, large diameter, laterally stable steel springs assembled into welded steel housing assemblies. The housings are fabricated to limit vertical movement of the isolated equipment if equipment loads are reduced or if the equipment is subjected to large external forces such as high winds or seismic events. The housings also provide a constant free and operating height to facilitate installation.

Spring elements are complete with internal noise isolation pads and leveling bolts as a part of the top load plate assembly. Holes are provided in all isolators for bolting to the structure and the supported equipment. To assure stability, the springs have a lateral spring stiffness greater than 1.2 times the rated vertical stiffness and are designed to provide a minimum overload capacity of 50%.

Model FLSS isolators are available with deflections to 2" (50 mm) and with load capacities to 18,000 lbs. (8165 kg) as standard products. Custom isolators with higher deflection and greater load capabilities are also available. Kinetics Model FLSS Spring Isolators are recommended for the isolation of vibration produced by equipment carrying a large fluid load which may be drained, such as boilers and chillers, and for the isolation of cooling towers, air-cooled condensers, etc., where motion due to wind loads must be minimized.

### Application

Kinetics Model FLSS Seismic Control Restraint Spring Isolators are recommended as a noise and vibration isolator for mechanical equipment under the following conditions:

1. When the mechanical equipment is located above or near noise and vibration sensitive areas.
2. When the mechanical equipment is subjected to seismic events, high wind loads or other external forces.
3. When the equipment to be isolated has significant changes of weight due to fluid drainage during maintenance operations such as boilers, chillers and cooling towers.

Operating static deflections are available up to 2" (50 mm) to maintain a high degree of noise and vibration control while compensating for long span flexible floor structures.

## Specifications

Vibration isolators shall be seismically rated, restrained spring isolators for equipment which is subject to load variations and large external forces. Isolators shall consist of large diameter, laterally stable, steel springs assembled into welded steel housing assemblies designed to limit movement of the supported equipment in all directions.

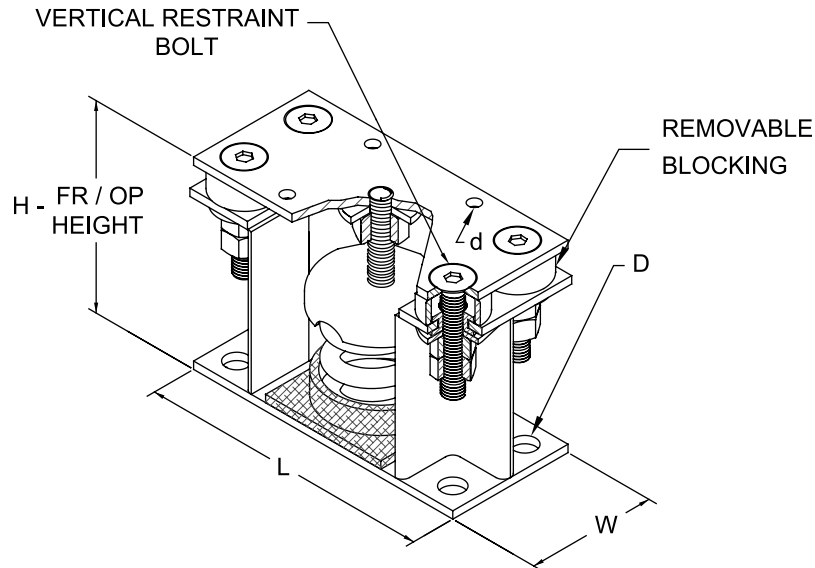
Housing assembly shall be of fabricated steel members and shall consist of a top load plate complete with adjusting and leveling bolts, adjustable vertical restraints, isolation washers, and a bottom plate with internal non-skid noise isolation pads and holes for anchoring of housing to supporting structure. Housing shall be hotdip galvanized for corrosion resistance. Housing shall be designed to provide a constant free and operating height within 1/8" (3 mm).

The isolator housing shall provide a minimum of 1 g restraint in all directions.

Spring elements shall be selected to provide static deflections as shown on the vibration isolation schedule or as indicated or required in the project documents. Springs shall be color coded or otherwise identified.

Spring elements shall have a lateral stiffness greater than 1.2 times the rated vertical stiffness and shall be designed to provide a minimum of 50% overload capacity. Non-welded spring elements shall be polyester powder coated, and shall have a 1000 hr rating when tested in accordance with ASTM B-117.

Vibration isolators shall be Model FLSS as manufactured by Kinetics Noise Control, Inc.



Isolator Type	Spring Color	Rated Capacity		Rated Deflection		Spring O.D.		L		W		D		d		H	
		lbs.	kg	in.	mm	in.	mm	in.	mm	in.	mm	in.	mm	in.	mm	in.	mm
FLSS-1-250	Blue	250	113	1.79	45	3.00	76	9.00	227	4.00	102	0.69	17	0.56	14	6.25	159
FLSS-1-450	Green	450	204	1.54	39	3.00	76	9.00	227	4.00	102	0.69	17	0.56	14	6.25	159
FLSS-1-625	Black	625	283	1.44	37	3.00	76	9.00	227	4.00	102	0.69	17	0.56	14	6.25	159
FLSS-1-800	Gray	800	363	1.31	33	3.00	76	9.00	227	4.00	102	0.69	17	0.56	14	6.25	159
FLSS-1-1000	Red	1000	454	1.15	29	3.00	76	9.00	227	4.00	102	0.69	17	0.56	14	6.25	159
FLSS-1-1250	Brown	1250	567	1.09	28	3.00	76	9.00	227	4.00	102	0.69	17	0.56	14	6.25	159
FLSS-1-1700	Orange	1700	771	0.95	24	3.00	76	9.00	227	4.00	102	0.69	17	0.56	14	6.25	159
FLSS-1-2200	Org/Gray	2200	998	1.00	26	3.00	76	9.00	227	4.00	102	0.69	17	0.56	14	6.25	159
FLSS-1-2465	Blue	2465	1118	1.00	25	3.00	76	9.00	227	4.00	102	0.69	17	0.56	14	6.25	159
FLSS-1-2865	Blu/Gray	2865	1300	1.00	25	3.00	76	9.00	227	4.00	102	0.69	17	0.56	14	6.25	159
FLSS-1-3500	Blue/Brn	3500	1588	1.00	25	3.00	76	9.00	227	4.00	102	0.69	17	0.56	14	6.25	159
FLSS-1-2500	Brown	2500	1134	1.09	28	3.00	76	15.25	387	5.00	127	0.69	17	0.56	14	6.88	175
FLSS-1-3400	Orange	3400	1542	0.95	24	3.00	76	15.25	387	5.00	127	0.69	17	0.56	14	6.88	175
FLSS-1-4400	Org/Gray	4400	1996	1.00	26	3.00	76	15.25	387	5.00	127	0.69	17	0.56	14	6.88	175
FLSS-1-4930	Blue	4930	2236	1.00	25	3.00	76	15.25	387	5.00	127	0.69	17	0.56	14	6.88	175
FLSS-1-5730	Blu/Gray	5730	2599	1.00	25	3.00	76	15.25	387	5.00	127	0.69	17	0.56	14	6.88	175
FLSS-1-7000	Blu/Brn	7000	3175	1.00	25	3.00	76	15.25	387	5.00	127	0.69	17	0.56	14	6.88	175
FLSS-1-5000	Brown	5000	2270	1.09	28	3.00	76	15.75	400	8.00	203	0.81	21	0.69	17	7.50	191
FLSS-1-6800	Orange	6800	3085	0.95	24	3.00	76	15.75	400	8.00	203	0.81	21	0.69	17	7.50	191
FLSS-1-8800	Org/Gray	8800	3992	1.00	26	3.00	76	15.75	400	8.00	203	0.81	21	0.69	17	7.50	191
FLSS-1-9860	Blue	9860	4472	1.00	25	3.00	76	15.75	400	8.00	203	0.81	21	0.69	17	7.50	191
FLSS-1-11460	Blu/Gray	11460	5198	1.00	25	3.00	76	15.75	400	8.00	203	0.81	21	0.69	17	7.50	191
FLSS-1-14000	Blu/Brn	14000	6350	1.00	25	3.00	76	15.75	400	8.00	203	0.81	21	0.69	17	7.50	191
FLSS-2-100	Gray	100	45	2.00	51	3.50	86	10.00	254	5.00	127	0.69	17	0.56	14	8.00	203
FLSS-2-135	Beige	135	61	2.00	51	3.50	86	10.00	254	5.00	127	0.69	17	0.56	14	8.00	203
FLSS-2-185	Brown	185	84	2.00	51	3.50	86	10.00	254	5.00	127	0.69	17	0.56	14	8.00	203
FLSS-2-225	Gray/Brn	225	102	2.00	51	3.50	86	10.00	254	5.00	127	0.69	17	0.56	14	8.00	203
FLSS-2-250	Blue	250	113	2.00	51	3.50	86	10.00	254	5.00	127	0.69	17	0.56	14	8.00	203
FLSS-2-375	Blue/Brn	375	170	2.00	51	3.50	86	10.00	254	5.00	127	0.69	17	0.56	14	8.00	203
FLSS-2-500	Green	500	227	2.00	51	3.50	86	10.00	254	5.00	127	0.69	17	0.56	14	8.00	203
FLSS-2-625	Gm/Brn	625	283	2.00	51	3.50	86	10.00	254	5.00	127	0.69	17	0.56	14	8.00	203
FLSS-2-750	Black	750	340	2.00	51	3.50	86	10.00	254	5.00	127	0.69	17	0.56	14	8.00	203
FLSS-2-875	Blk/Brn	875	397	2.00	51	3.50	86	10.00	254	5.00	127	0.69	17	0.56	14	8.00	203
FLSS-2-995	Orange	995	451	2.00	51	3.50	86	10.00	254	5.00	127	0.69	17	0.56	14	8.00	203
FLSS-2-1120	Org/Brn	1120	208	2.00	51	3.50	86	10.00	254	5.00	127	0.69	17	0.56	14	8.00	203
FLSS-2-1400	Org/Gm	1400	635	2.01	51	3.50	86	10.00	254	5.00	127	0.69	17	0.56	14	8.00	203
FLSS-2-1600	Red	1600	726	2.00	51	3.50	86	10.00	254	5.00	127	0.69	17	0.56	14	8.00	203
FLSS-2-1975	Red/Gm	1975	896	1.98	50	3.50	86	10.00	254	5.00	127	0.69	17	0.56	14	8.00	203
FLSS-2-2000	Orange	2000	907	2.00	51	5.00	127	11.00	280	5.00	127	0.69	17	0.56	14	10.00	254
FLSS-2-2500	Blue	2500	1134	2.00	51	5.00	127	11.00	280	5.00	127	0.69	17	0.56	14	10.00	254
FLSS-2-2750	Blu/Blu	2750	1247	2.00	51	5.00	127	11.00	280	5.00	127	0.69	17	0.56	14	10.00	254
FLSS-2-3025	Blu/Gm	3025	1372	2.02	51	5.00	127	11.00	280	5.00	127	0.69	17	0.56	14	10.00	254
FLSS-2-3250	Blu/Blk	3250	1474	2.00	51	5.00	127	11.00	280	5.00	127	0.69	17	0.56	14	10.00	254
FLSS-2-3500	Blu/Org	3500	1588	2.00	51	5.00	127	11.00	280	5.00	127	0.69	17	0.56	14	10.00	254
FLSS-2-3900	Blu/Org/Gm	3900	1769	2.00	51	5.00	127	11.00	280	5.00	127	0.69	17	0.56	14	10.00	254
FLSS-2-4100	Blu/Red	4100	1860	2.00	51	5.00	127	11.00	280	5.00	127	0.69	17	0.56	14	10.00	254
FLSS-2-4500	Blu/Red/Gm	4500	2041	2.00	51	5.00	127	11.00	280	5.00	127	0.69	17	0.56	14	10.00	254
FLSS-2-4000	Orange	4000	1814	2.00	51	5.00	127	17.50	444	6.00	152	0.69	17	0.56	14	10.13	257
FLSS-2-5000	Blu	5000	2268	2.00	51	5.00	127	17.50	444	6.00	152	0.69	17	0.56	14	10.13	257
FLSS-2-5500	Blu/Blu	5500	2495	2.00	51	5.00	127	17.50	444	6.00	152	0.69	17	0.56	14	10.13	257
FLSS-2-6050	Blu/Gm	6050	2744	2.02	51	5.00	127	17.50	444	6.00	152	0.69	17	0.56	14	10.13	257
FLSS-2-6500	Blu/Blk	6500	2948	2.00	51	5.00	127	17.50	444	6.00	152	0.69	17	0.56	14	10.13	257
FLSS-2-7000	Blu/Org	7000	3175	2.00	51	5.00	127	17.50	444	6.00	152	0.69	17	0.56	14	10.13	257
FLSS-2-7800	Blu/Org/Gm	7800	3538	2.00	51	5.00	127	17.50	444	6.00	152	0.69	17	0.56	14	10.13	257
FLSS-2-8200	Blu/Red	8200	3719	2.00	51	5.00	127	17.50	444	6.00	152	0.69	17	0.56	14	10.13	257
FLSS-2-9000	Blu/Red/Gm	9000	4082	2.00	51	5.00	127	17.50	444	6.00	152	0.69	17	0.56	14	10.13	257
FLSS-2-8000	Orange	8000	3629	2.00	51	5.00	127	21.50	546	11.00	279	0.81	21	0.69	17	11.00	279
FLSS-2-10000	Blue	10000	4536	2.00	51	5.00	127	21.50	546	11.00	279	0.81	21	0.69	17	11.00	279
FLSS-2-11000	Blu/Blu	11000	4990	2.00	51	5.00	127	21.50	546	11.00	279	0.81	21	0.69	17	11.00	279
FLSS-2-12100	Blu/Gm	12100	5488	2.02	51	5.00	127	21.50	546	11.00	279	0.81	21	0.69	17	11.00	279
FLSS-2-13000	Blu/Blk	13000	5897	2.00	51	5.00	127	21.50	546	11.00	279	0.81	21	0.69	17	11.00	279
FLSS-2-14000	Blu/Org	14000	6350	2.00	51	5.00	127	21.50	546	11.00	279	0.81	21	0.69	17	11.00	279
FLSS-2-15600	Blu/Org/Gm	15600	7076	2.00	51	5.00	127	21.50	546	11.00	279	0.81	21	0.69	17	11.00	279
FLSS-2-16400	Blu/Red	16400	7439	2.00	51	5.00	127	21.50	546	11.00	279	0.81	21	0.69	17	11.00	279
FLSS-2-18000	Blu/Red/Gm	18000	8165	2.00	51	5.00	127	21.50	546	11.00	279	0.81	21	0.69	17	11.00	279

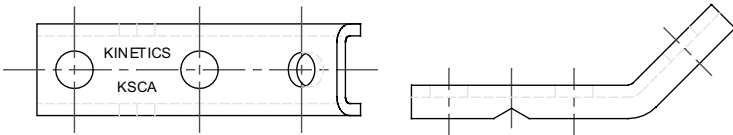
# KINETICS™

## Seismic Restraint for Isolated and Suspended Mechanical Equipment

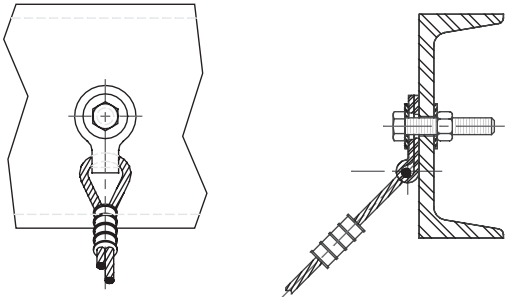
for -

- Piping
- Fans
- VAV & Fan Terminal Boxes
- Silencers & Mufflers
- Ductwork
- Air Handlers

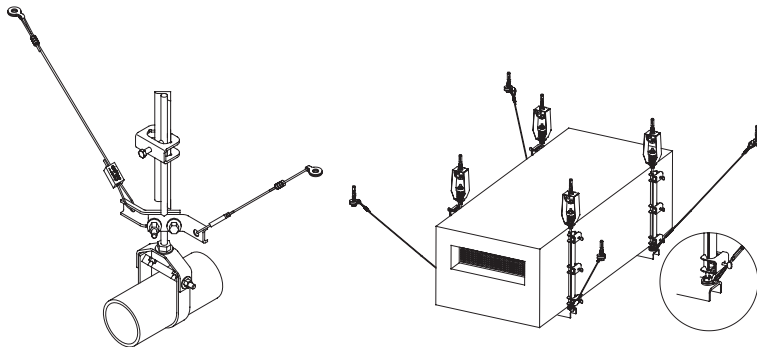
### Kinetics KSCA Cable Attachment Bracket



### Kinetics KSUA Cable Attachment Bracket



### Kinetics KSUA Cable Attachment Bracket

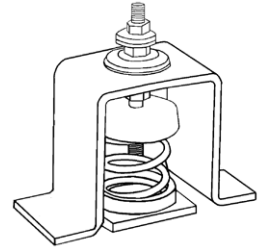


# KINETICS™

## Floor-Mounted Seismic Restraints

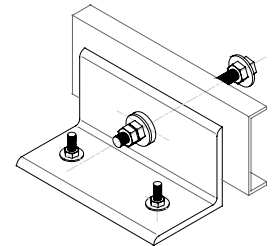
### Seismic Control Spring Isolators Model FHS

- Combination spring isolator & seismic restraint
- All-directional restraint with vertical limit stops



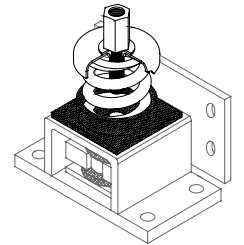
### Seismic Snubber Model HS-5

- Double axis horizontal and vertical seismic restraint
- Standard capacities to 3,275 lbs.
- Can be bolted or welded in place

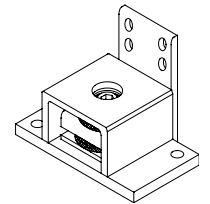


### Modular Restraint/Isolator Model FMS

- Can be used as a restraint device or as a seismically rated vibration isolator assembly
- Restraint components are available in 8 sizes with horizontal force ratings to 70,000 lbs.
- Standard isolation elements are available to 4" deflection with support capacities to 23,000 lbs.
- Ideal for equipment mounted on structural frame or concrete inertia bases



Kinetics FMS with isolator



Kinetics FMS without isolator



kineticsnoise.com  
sales@kineticsnoise.com  
1-800-959-1229

## Restrained Spring Isolators Model FLSS 4

### Description

Kinetics Model FLSS Seismic Control Restrained Spring Vibration Isolators consist of free-standing, large diameter, laterally stable steel springs assembled into welded steel housing assemblies. The housings are fabricated to limit vertical movement of the isolated equipment if equipment loads are reduced or if the equipment is subjected to large external forces such as high winds or seismic events. The housings also provide a constant free and operating height to facilitate installation.

Spring elements are complete with internal noise isolation pads and leveling bolts as a part of the top load plate assembly. Holes are provided in all isolators for bolting to the structure and the supported equipment. To assure stability, the springs have a lateral spring stiffness greater than 1.2 times the rated vertical stiffness and are designed to provide a minimum overload capacity of 50%.

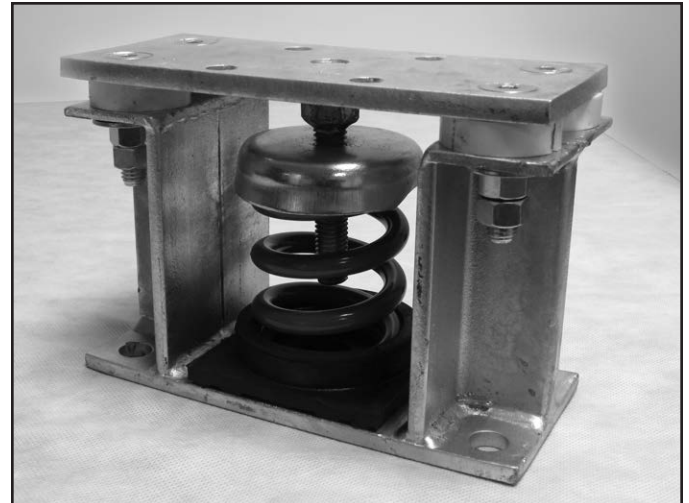
FLSS isolators are available with deflections to 4 in. (100 mm) and with load capacities to 23,200 lbs. (10523 kg) as standard products. Custom isolators with higher deflection and greater load capabilities are also available. Kinetics Model FLSS Spring Isolators are recommended for the isolation of vibration produced by equipment carrying a large fluid load which may be drained, such as boilers and chillers, and for the isolation of cooling towers, air-cooled condensers, etc., where motion due to wind loads must be minimized.

### Application

Kinetics Model FLSS Seismic Control Restraint Spring Isolators are recommended as a noise and vibration isolator for mechanical equipment under the following conditions:

1. When the mechanical equipment is located above or near noise and vibration sensitive areas.
2. When the mechanical equipment is subjected to seismic events, high wind loads or other external forces.
3. When the equipment to be isolated has significant changes of weight due to fluid drainage during maintenance operations such as boilers, chillers and cooling towers.

Operating static deflections are available up to 4 in. (100 mm) to maintain a high degree of noise and vibration control while compensating for long span flexible floor structures.



### Specification

Vibration isolators shall be seismically rated, restrained spring isolators for equipment which is subject to load variations and large external forces. Isolators shall consist of large diameter, laterally stable, steel springs assembled into welded steel housing assemblies designed to limit movement of the supported equipment in all directions.

Housing assembly shall be of fabricated steel members and shall consist of a top load plate complete with adjusting and leveling bolts, adjustable vertical restraints, isolation washers, and a bottom plate with internal non-skid noise isolation pads and holes for anchoring of housing to supporting structure. Housing shall be hot-dip galvanized for corrosion resistance. Housing shall be designed to provide a constant free and operating height within 1/8 in. (3 mm).

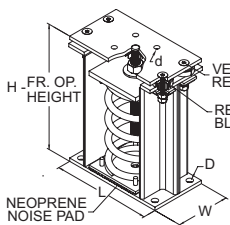
The isolator housing shall provide seismic and wind restraint required by current building codes.

Spring elements shall be selected to provide static deflections as shown on the vibration isolation schedule or as indicated or required in the project documents. Springs shall be color coded or otherwise identified.

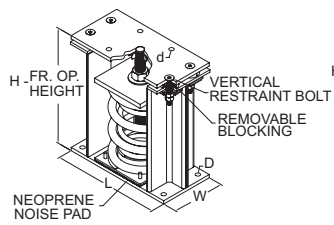
Spring elements shall have a lateral stiffness greater than 1.2 times the rated vertical stiffness and shall be designed to provide a minimum of 50% overload capacity. Non-welded spring elements shall be polyester powder coated, and shall have a 1000 hr rating when tested in accordance with ASTM B-117.

Vibration isolators shall be Model FLSS as manufactured by Kinetics Noise Control, Inc.

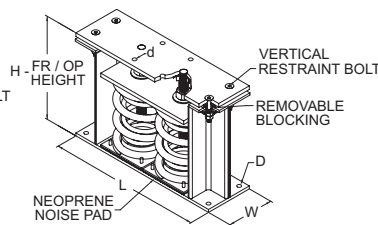
Isolator Type	Spring Color	Rated Capacity		Rated Deflection		Spring O.D.		L		W		D		d		H	
		lbs.	kg	in.	mm	in.	mm	in.	mm	in.	mm	in.	mm	in.	mm	in.	mm
FLSS-4-100	Gray	100	45	4.00	102	5.63	143	11.00	279	6.00	152	0.69	17	0.56	14	14.00	356
FLSS-4-250	Blue	250	113	4.00	102	5.63	143	11.00	279	6.00	152	0.69	17	0.56	14	14.00	356
FLSS-4-500	Grn	500	227	4.00	102	5.63	143	11.00	279	6.00	152	0.69	17	0.56	14	14.00	356
FLSS-4-750	Black	750	340	4.00	102	5.63	143	11.00	279	6.00	152	0.69	17	0.56	14	14.00	356
FLSS-4-1000	Red	1000	454	4.00	102	5.63	143	11.00	279	6.00	152	0.69	17	0.56	14	14.00	356
FLSS-4-1250	Brown	1250	567	4.00	102	5.63	143	11.00	279	6.00	152	0.69	17	0.56	14	14.00	356
FLSS-4-1600	Orange	1600	726	4.00	102	5.63	143	11.00	279	6.00	152	0.69	17	0.56	14	14.00	356
FLSS-4-2250	Beige	2250	1021	4.00	102	8.00	203	16.25	413	8.00	203	0.69	17	0.69	17	17.50	445
FLSS-4-2500	Bge/Blu	2500	1134	4.00	102	8.00	203	16.25	413	8.00	203	0.69	17	0.69	17	17.50	445
FLSS-4-2750	Bge/Grn	2750	1247	4.00	102	8.00	203	16.25	413	8.00	203	0.69	17	0.69	17	17.50	445
FLSS-4-3000	Bge/Blk	3000	1361	4.00	102	8.00	203	16.25	413	8.00	203	0.69	17	0.69	17	17.50	445
FLSS-4-3250	Bge/Red	3250	1474	4.00	102	8.00	203	16.25	413	8.00	203	0.69	17	0.69	17	17.50	445
FLSS-4-3500	Bge/Brn	3500	1588	4.00	102	8.00	203	16.25	413	8.00	203	0.69	17	0.69	17	17.50	445
FLSS-4-3850	Bge/Org	3850	1746	4.00	102	8.00	203	16.25	413	8.00	203	0.69	17	0.69	17	17.50	445
FLSS-4-4200	Chrome	4200	1905	4.00	102	8.00	203	16.25	413	8.00	203	0.69	17	0.69	17	17.50	445
FLSS-4-4450	Chr/Blu	4450	2018	4.00	102	8.00	203	16.25	413	8.00	203	0.69	17	0.69	17	17.50	445
FLSS-4-4700	Chr/Grn	4700	2132	4.00	102	8.00	203	16.25	413	8.00	203	0.69	17	0.69	17	17.50	445
FLSS-4-4950	Chr/Blk	4950	2245	4.00	102	8.00	203	16.25	413	8.00	203	0.69	17	0.69	17	17.50	445
FLSS-4-5200	Chr/Red	5200	2359	4.00	102	8.00	203	16.25	413	8.00	203	0.69	17	0.69	17	17.50	445
FLSS-4-5450	Chr/Brn	5450	2472	4.00	102	8.00	203	16.25	413	8.00	203	0.69	17	0.69	17	17.50	445
FLSS-4-5800	Chr/Org	5800	2631	4.00	102	8.00	203	16.25	413	8.00	203	0.69	17	0.69	17	17.50	445
FLSS-4-5500	Bge/Grn	5500	2495	4.00	102	8.00	203	26.00	660	8.00	203	0.69	17	0.69	17	17.50	445
FLSS-4-6000	Bge/Blk	6000	2722	4.00	102	8.00	203	26.00	660	8.00	203	0.69	17	0.69	17	17.50	445
FLSS-4-6500	Bge/Red	6500	2948	4.00	102	8.00	203	26.00	660	8.00	203	0.69	17	0.69	17	17.50	445
FLSS-4-7000	Bge/Brn	7000	3175	4.00	102	8.00	203	26.00	660	8.00	203	0.69	17	0.69	17	17.50	445
FLSS-4-7700	Bge/Org	7700	3493	4.00	102	8.00	203	26.00	660	8.00	203	0.69	17	0.69	17	17.50	445
FLSS-4-8400	Chrome	8400	3810	4.00	102	8.00	203	26.00	660	8.00	203	0.69	17	0.69	17	17.50	445
FLSS-4-8900	Chr/Blu	8900	4037	4.00	102	8.00	203	26.00	660	8.00	203	0.69	17	0.69	17	17.50	445
FLSS-4-9400	Chr/Grn	9400	4264	4.00	102	8.00	203	26.00	660	8.00	203	0.69	17	0.69	17	17.50	445
FLSS-4-9900	Chr/Blk	9900	4491	4.00	102	8.00	203	26.00	660	8.00	203	0.69	17	0.69	17	17.50	445
FLSS-4-10400	Chr/Red	10400	4717	4.00	102	8.00	203	26.00	660	8.00	203	0.69	17	0.69	17	17.50	445
FLSS-4-10900	Chr/Brn	10900	4944	4.00	102	8.00	203	26.00	660	8.00	203	0.69	17	0.69	17	17.50	445
FLSS-4-11600	Chr/Org	11600	5262	4.00	102	8.00	203	26.00	660	8.00	203	0.69	17	0.69	17	17.50	445
FLSS-4-11000	Bge/Grn	11000	4990	4.00	102	8.00	203	27.00	686	17.00	432	0.81	21	0.69	17	17.50	445
FLSS-4-12000	Bge/Blk	12000	5443	4.00	102	8.00	203	27.00	686	17.00	432	0.81	21	0.69	17	17.50	445
FLSS-4-13000	Bge/Red	13000	5897	4.00	102	8.00	203	27.00	686	17.00	432	0.81	21	0.69	17	17.50	445
FLSS-4-14000	Bge/Brn	14000	6350	4.00	102	8.00	203	27.00	686	17.00	432	0.81	21	0.69	17	17.50	445
FLSS-4-15400	Bge/Org	15400	6985	4.00	102	8.00	203	27.00	686	17.00	432	0.81	21	0.69	17	17.50	445
FLSS-4-16800	Chrome	16800	7620	4.00	102	8.00	203	27.00	686	17.00	432	0.81	21	0.69	17	17.50	445
FLSS-4-17800	Chr/Blu	17800	8074	4.00	102	8.00	203	27.00	686	17.00	432	0.81	21	0.69	17	17.50	445
FLSS-4-18800	Chr/Grn	18800	8528	4.00	102	8.00	203	27.00	686	17.00	432	0.81	21	0.69	17	17.50	445
FLSS-4-19800	Chr/Blk	19800	8981	4.00	102	8.00	203	27.00	686	17.00	432	0.81	21	0.69	17	17.50	445
FLSS-4-20800	Chr/Red	20800	9435	4.00	102	8.00	203	27.00	686	17.00	432	0.81	21	0.69	17	17.50	445
FLSS-4-21800	Chr/Brn	21800	9888	4.00	102	8.00	203	27.00	686	17.00	432	0.81	21	0.69	17	17.50	445
FLSS-4-23200	Chr/Org	23200	10523	4.00	102	8.00	203	27.00	686	17.00	432	0.81	21	0.69	17	17.50	445



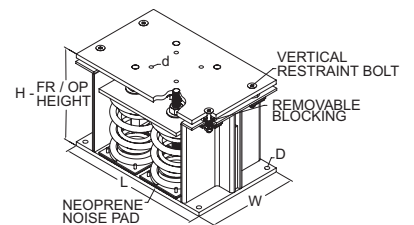
FLSS-4-100/1600



FLSS-4-2250/5800



FLSS-4-5500/11600



FLSS-4-11000/23200



kineticsnoise.com  
sales@kineticsnoise.com  
1-800-959-1229