

SPRING DATA

SPRING ISOLATORS ARE COMPUTER SELECTED AND LOCATED TO PROVIDE A NOMINAL 2 INCH (50 mm) STATIC DEFLECTION

SPRING ISOLATORS HAVE A MINIMUM K_x/K_y OF 1.2

SPRING ISOLATORS HAVE A TYPICAL OVERLOAD CAPACITY OF 50%

SPRING ISOLATORS ARE SAFE AT SOLID LOADING

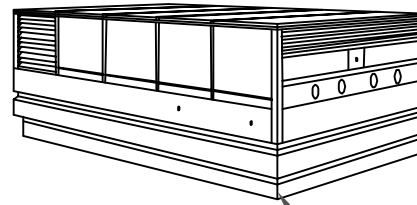
SPRING ISOLATORS ARE PAINTED.

RESTRAINT AND ATTACHMENT DATA

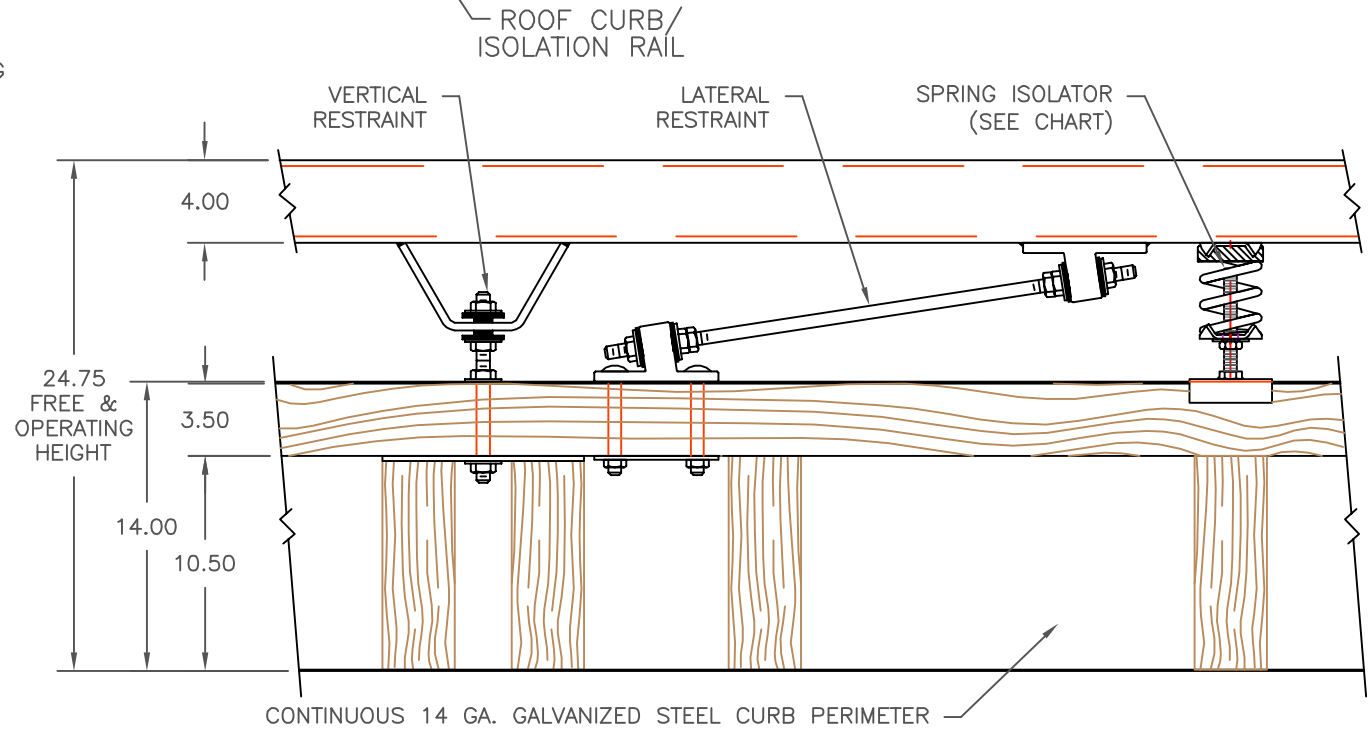
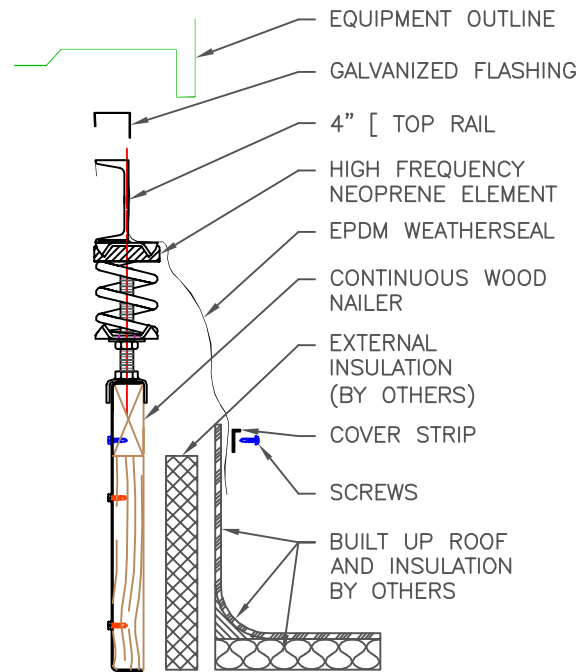
RESTRAINT ELEMENTS DESIGNED FOR 3000 LB LATERAL AND VERTICAL SIMULTANEOUS LOADING

ATTACHMENT TO STRUCTURE: FOR EACH LATERAL OR VERTICAL RESTRAINT, (3) 3/8" BOLTS OR (6) 1/4" BOLTS OR EQUIVALENT ARE REQUIRED.

ROOFTOP EQUIPMENT



RATED LOAD LB/KG	RATED DEFL. IN/mm	SPRING FR. HT. IN/mm	SPRING O. D. IN/mm	COLOR CODE
100/45	2.00/51	5.2/132	3.0/76	GRAY
250/113	2.00/51	5.2/132	3.0/76	BLUE
400/181	2.00/51	5.2/132	3.0/76	BEIGE
500/227	2.00/51	5.2/132	3.0/76	GREEN
650/294	1.98/50	5.2/132	3.0/76	BROWN
750/340	1.96/50	5.2/132	3.0/76	BLACK
850/386	2.00/50	5.2/132	3.0/76	BRN/BLU
950/431	2.00/50	5.2/132	3.0/76	BLK/BLU
1050/476	2.00/50	5.2/132	3.0/76	BRN/GRN
1150/522	2.00/50	5.2/132	3.0/76	BLK/GRN



TITLE
2" KINETICS CURB-2
DEFL. ISOLATION RAIL

LAST DATE
REVISED
12/03/09

REVISED BY
DCB

DRAWING NO.
SS-20090002

SS