

# CHAPTER P4

## KRMS / RQ ELASTOMERIC ISOLATORS AND RESTRAINTS

### TABLE OF CONTENTS

General Description (KRMS)	P4.1.1
General Description (RQ)	P4.1.2
Submittal Data	P4.2
KRMS	P4.2.1
RQ	P4.2.2
Selection Information	P4.3
Load Spreader Plate Data	P4.4
Installation Instructions	P4.5

### TABLE OF CONTENTS (Chapter P4)

KRMS / RQ ELASTOMERIC ISOLATORS AND RESTRAINTS

RELEASE DATE: 04/09/04



DUBLIN, OHIO, USA • MISSISSAUGA, ONTARIO, CANADA

Toll Free (USA only): 800-959-1229  
International: 614-889-0480  
Fax: 614-889-0540  
World Wide Web: [www.kineticsnoise.com](http://www.kineticsnoise.com)  
Email: [sales@kineticsnoise.com](mailto:sales@kineticsnoise.com)

PAGE:

P4.0



## Description

Kinetics Model RQ Vibration Isolators are one-piece molded neoprene mounts with encapsulated metal inserts. The metal inserts provide all-directional resistance for horizontally and vertically applied loads. Each isolator incorporates two bolt-down holes on the bottom load surface and a steel top load plate for attachment to the supported equipment. The neoprene is highly oil resistant and has been designed to operate within the strain limits of the isolator to provide the maximum isolation and longest life expectancy possible using neoprene compounds. Model RQ is designed for up to 0.15" (4 mm) deflection, available in two sizes and four capacities from 500 lbs. to 1300 lbs. (227 kg to 591 kg). Kinetics Model RQ is recommended for the isolation of vibration produced by small pumps, vent sets, low pressure packaged air-handling units, etc., and is usually selected when first cost must be minimized.



## Specifications

Vibration isolators shall be neoprene, molded from oil-resistant compounds, with a cast-in-top steel load transfer plate for bolting to supported equipment and a bolt-down plate with holes provided for anchoring to the supporting structure. Isolator shall provide lateral load resistance for loads applied parallel to mounting surface. Neoprene vibration isolators shall have minimum operating static deflections as shown on the Vibration Isolation Schedule or as indicated on the project documents but not exceeding published load capabilities.

Neoprene vibration isolators shall be Model RQ, by Kinetics Noise Control, Inc.

## Model RQ General Description

PAGE 1 OF 1

RELEASE DATE: 05/13/04



DUBLIN, OHIO, USA • MISSISSAUGA, ONTARIO, CANADA

Toll Free (USA only): 800-959-1229  
International: 614-889-0480  
Fax: 614-889-0540  
World Wide Web: [www.kineticsnoise.com](http://www.kineticsnoise.com)  
Email: [sales@kineticsnoise.com](mailto:sales@kineticsnoise.com)

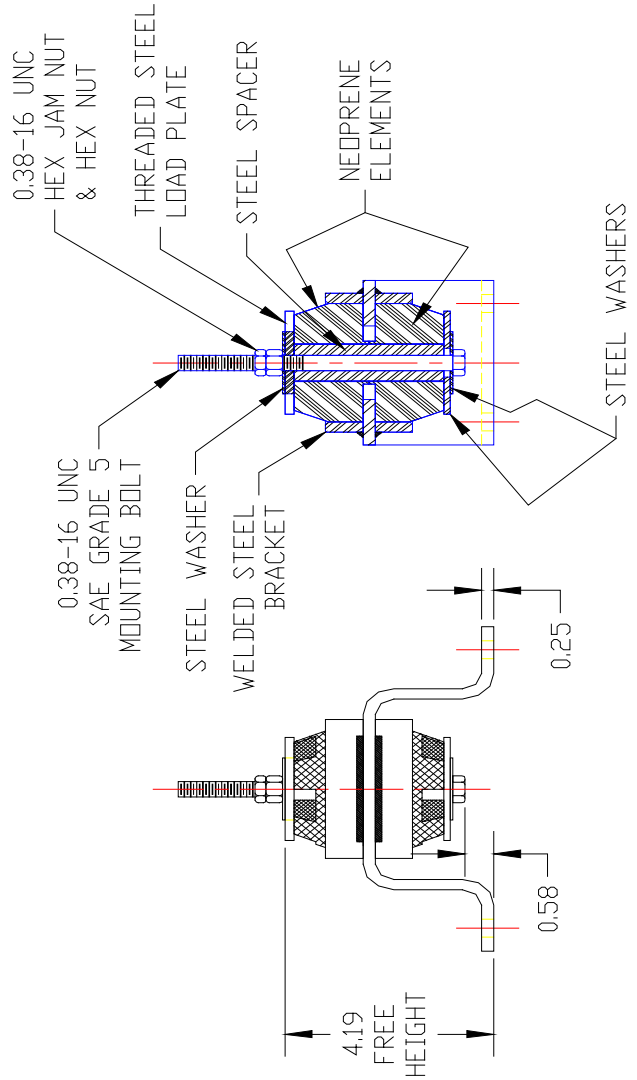
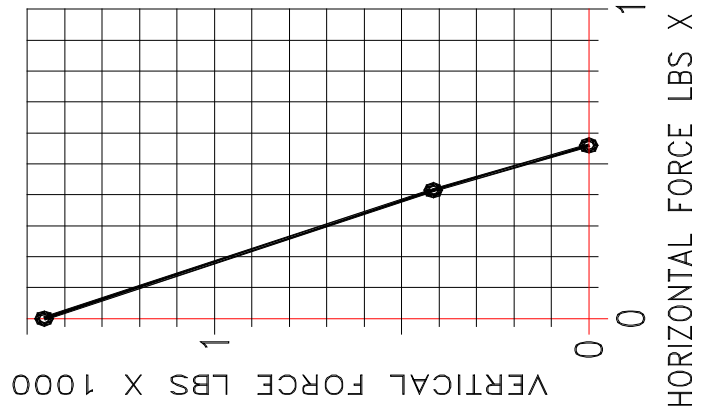
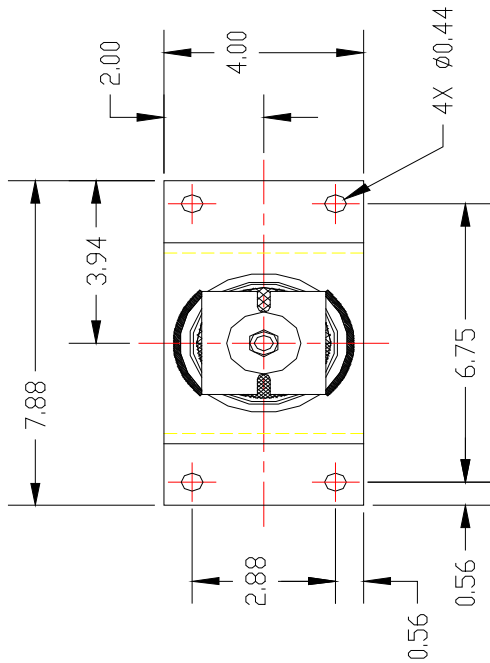
PAGE:

P4.1.2



MODEL	RATED LOAD (LBS)	RATED DEFLECTION (CONFINED) (IN)	DUROMETER (SHORE A)	COLOR CODE DOT
KRMS-A-125	125	0.25	30	BLACK
KRMS-A-175	175	0.25	40	RED
KRMS-A-300	300	0.25	55	GREEN
KRMS-A-450	450	0.25	65	WHITE
KRMS-A-700	700	0.25	75	PURPLE

REFERENCE DRAWING: M-20030150



**KRMS-A-125/700**

DRAWING # SS-20030150

RELEASE DATE: 12/19/03



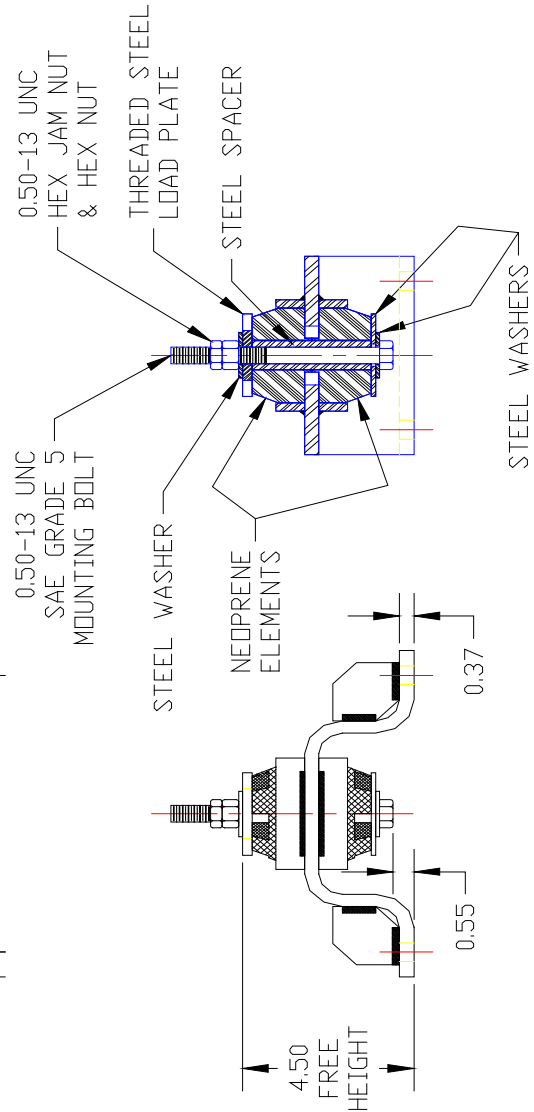
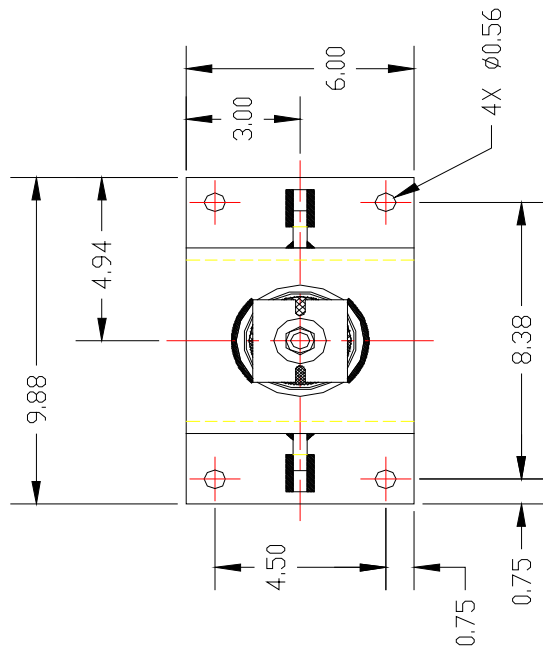
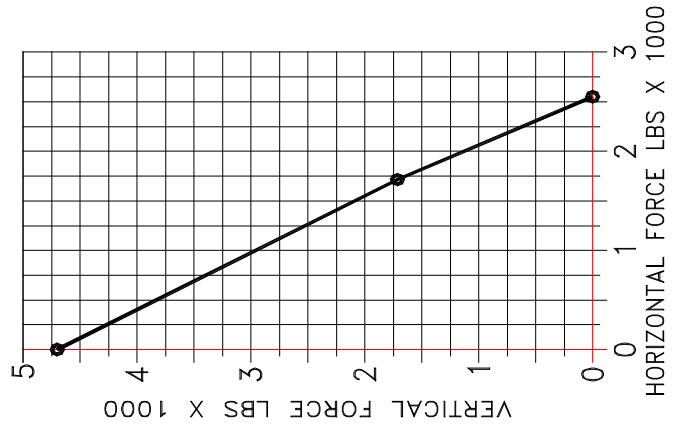
Toll Free (USA only): 800-959-1229  
 International: 614-889-0480  
 Fax: 614-889-0540  
 World Wide Web: www.kineticsnoise.com  
 Email: sales@kineticsnoise.com

DOCUMENT:  
**P4.2.1-1**

DUBLIN, OHIO, USA • MISSISSAUGA, ONTARIO, CANADA

MODEL	RATED LOAD (LBS)	RATED DEFLECTION (CONFINED) (IN)	DUROMETER (SHORE A)	COLOR CODE DOT
KRMS-B-125	125	0.25	30	BLACK
KRMS-B-175	175	0.25	40	RED
KRMS-B-300	300	0.25	55	GREEN
KRMS-B-450	450	0.25	65	WHITE
KRMS-B-700	700	0.25	75	PURPLE
KRMS-B-1100	1100	0.33	80	YELLOW
KRMS-B-2200	2200	0.33	90	PINK

REFERENCE DRAWING: M-20030160



## KRMS-B-125/2200

DRAWING # SS-20030160

RELEASE DATE: 12/19/03



DUBLIN, OHIO, USA • MISSISSAUGA, ONTARIO, CANADA

Toll Free (USA only): 800-959-1229  
 International: 614-889-0480  
 Fax: 614-889-0540  
 World Wide Web: [www.kineticsnoise.com](http://www.kineticsnoise.com)  
 Email: [sales@kineticsnoise.com](mailto:sales@kineticsnoise.com)

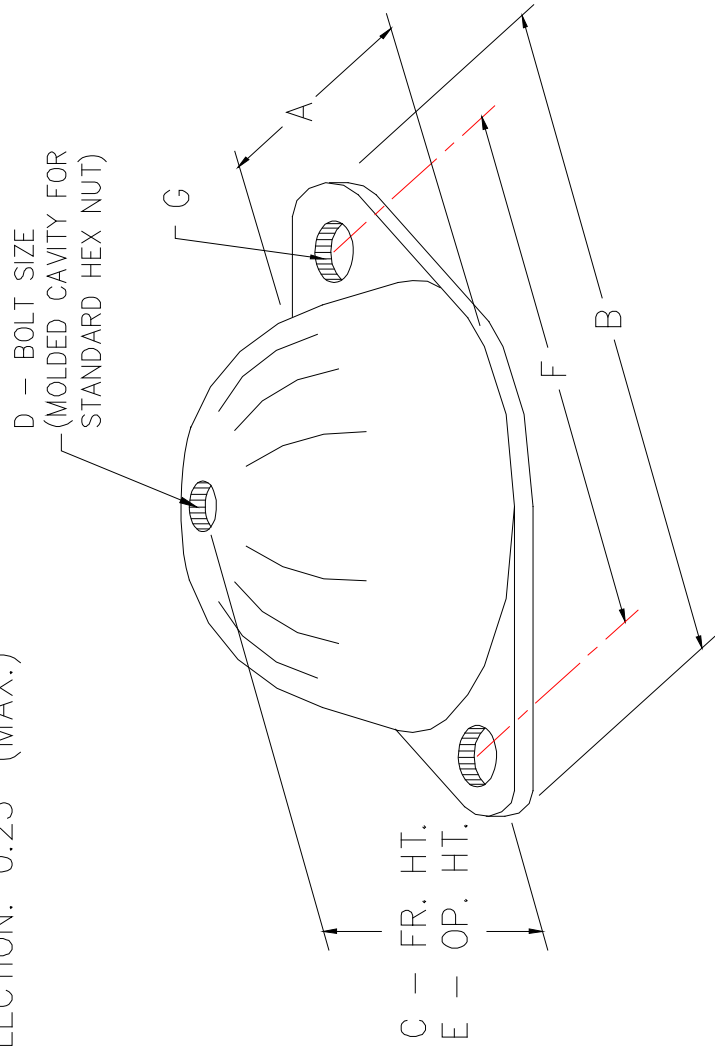
DOCUMENT:

P4.2.1-2



ISOLATOR TYPE	DURO.	RATED COMPRESSION CAPACITY	RATED DEFLECTION	A	B	C	D	E	F	G
RQ-500	40	500 LBS.	0.15	3.25	5.38	1.65	0.50	1.50	4.12	0.53
RQ-750	50	750 LBS.	0.15	3.25	5.38	1.65	0.50	1.50	4.12	0.53
RQ-1000	50	1000 LBS.	0.15	3.88	6.25	1.65	0.62	1.50	5.00	0.53
RQ-1300	60	1300 LBS.	0.15	3.88	6.25	1.65	0.62	1.50	5.00	0.53
RQ-1950	70	1950 LBS.	0.15	3.88	6.25	1.65	0.62	1.50	5.00	0.53

HORIZONTAL SHEAR CAPACITY: 1800 LBS.  
HORIZONTAL DEFLECTION: 0.25" (MAX.)



**MODEL RQ**

DRAWING # S-02.05-1C

RELEASE DATE: 12/19/03



DUBLIN, OHIO, USA • MISSISSAUGA, ONTARIO, CANADA

Toll Free (USA only): 800-959-1229  
International: 614-889-0480  
Fax: 614-889-0540  
World Wide Web: www.kineticsnoise.com  
Email: sales@kineticsnoise.com

DOCUMENT:

**P4.2.2**

