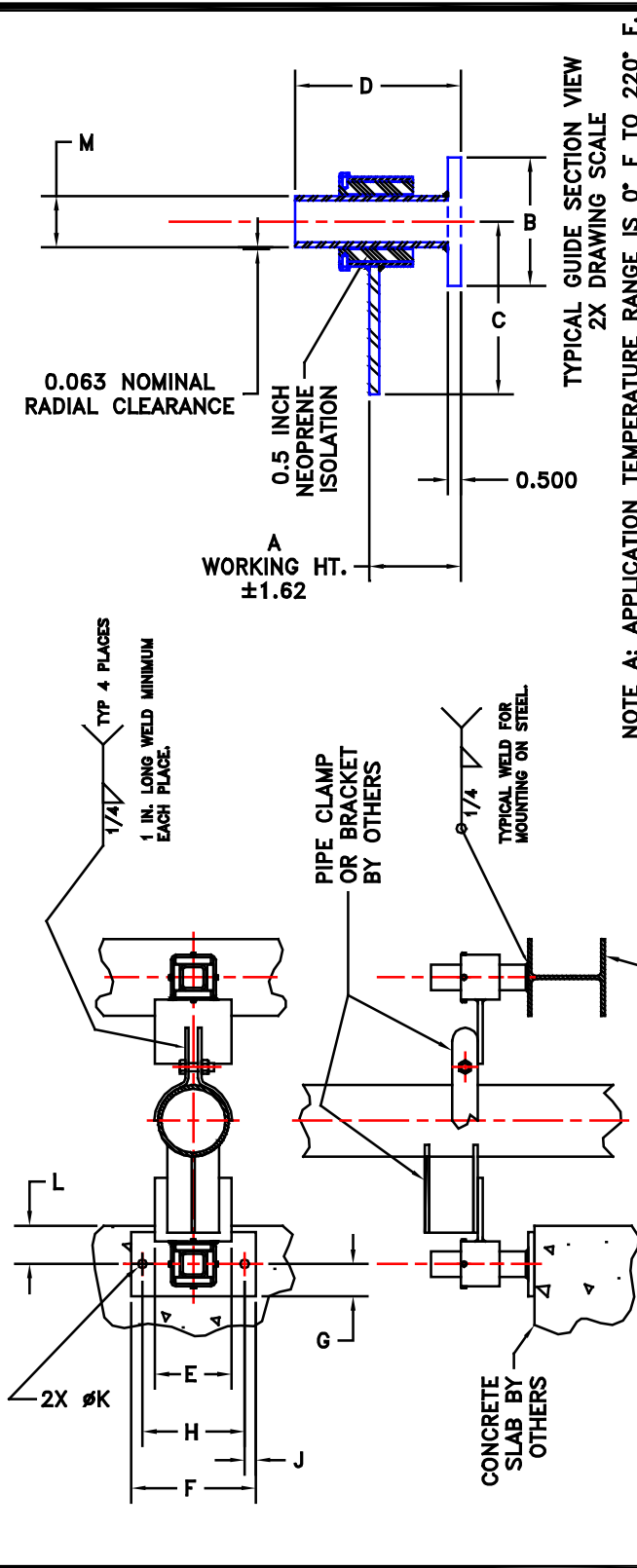


ITEM NO.	MODEL	CAPACITY (LBS)		A	B (OPT)	C	D	E	F (OPT)	G	H (OPT)	U (OPT)	K (OPT)	L MIN *	M	ANCHOR EMBEDMENT *
		SINGLE	PAIR													
01	KPG-650	650	1300	3.94	3.00	6.50	6.75	5.00	8.63	1.50	7.00	0.81	0.56	6.75	1.50	3.50
02	KPG-1300	1300	2600	4.06	5.00	6.75	7.00	6.00	9.75	2.50	8.00	0.88	0.69	8.25	2.00	4.00
03	KPG-2500	2500	5000	4.25	6.00	8.00	7.12	6.00	11.50	3.00	9.50	1.00	0.81	9.75	2.50	4.75
04	KPG-5000	5000	10000	4.50	9.00	9.25	7.38	8.00	14.50	4.50	12.00	1.25	1.06	13.50	3.00	6.00



NOTE A: APPLICATION TEMPERATURE RANGE IS 0° F TO 220° F.
 NOTE B: FOR CONCRETE ANCHORS, THE CONCRETE SHALL HAVE A MIN. COMPRESSIVE STRENGTH OF 4000 PSI.
 * NOTE C: THESE ARE THE VALUES USED BY THE SEISMIC PROGRAMS OF KINETICS NOISE CONTROL.

MODEL KPG	DRAWING NO.	SS-dwg
GUIDE INSTALLATION	REVISED BY	PWM
ENGLISH VERSION	LAST DATE REVISED	7-26-02
KINETICS Noise Control	SS-20010396 (E)	

MODEL KPG (RISER GUIDE) – 3" TOTAL SLIP

PAGE 1 OF 2



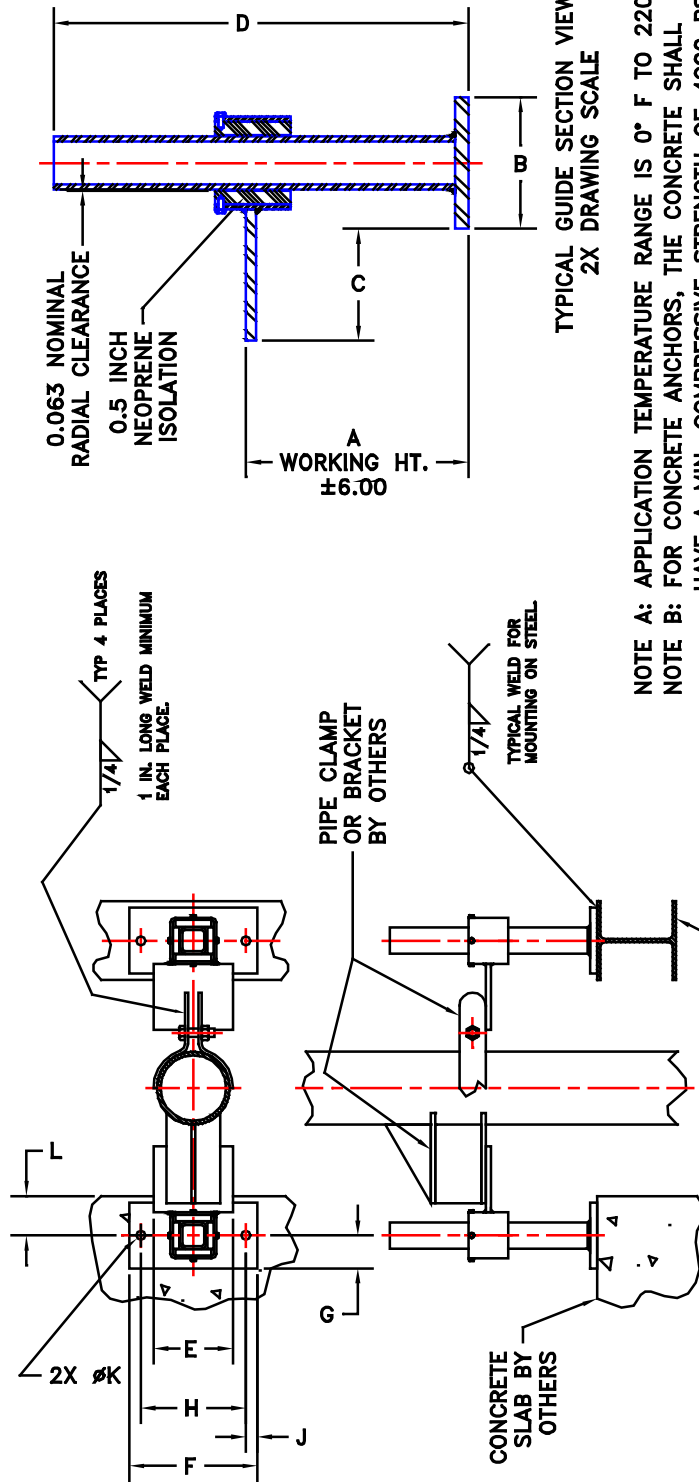
Toll Free (USA only): 800-959-1229
 International: 614-889-0480
 Fax: 614-889-0540
 World Wide Web: www.kineticsnoise.com
 Email: sales@kineticsnoise.com

DOCUMENT:

R3.2



ITEM NO.	MODEL	CAPACITY (LBS)		A	B	C	D	E	F	G	H	J	K	L MIN *	ANCHOR EMBEDMENT *
		SINGLE	PAIR												
01	KPG-250	250	500	8.31	3.00	5.00	15.50	5.00	8.63	1.50	7.00	0.81	0.56	6.75	3.50
02	KPG-500	500	1000	8.44	5.00	4.25	15.75	6.00	9.75	2.50	8.00	0.88	0.69	8.25	4.00
03	KPG-1000	1000	2000	8.63	6.00	5.00	15.88	6.00	11.50	3.00	9.50	1.00	0.81	9.75	4.75
04	KPG-2000	2000	4000	8.88	9.00	4.75	16.13	8.00	14.50	4.50	12.00	1.25	1.06	13.50	6.00



NOTE A: APPLICATION TEMPERATURE RANGE IS 0° F TO 220° F.
 NOTE B: FOR CONCRETE ANCHORS, THE CONCRETE SHALL HAVE A MIN. COMPRESSIVE STRENGTH OF 4000 PSI.
 * NOTE C: THESE ARE THE VALUES USED BY THE SEISMIC PROGRAMS OF KINETICS NOISE CONTROL.

	MODEL KPG	DRAWING NO.	SS-dwg
	GUIDE INSTALLATION ENGLISH VERSION	REVISED BY	RSS
	TITLE	LAST DATE REVISED	6-28-02
	SS-20010395 (E)		

MODEL KPG (RISER GUIDE) – 12" TOTAL SLIP

PAGE 2 OF 2



Toll Free (USA only): 800-959-1229
 International: 614-889-0480
 Fax: 614-889-0540
 World Wide Web: www.kineticsnoise.com
 Email: sales@kineticsnoise.com

DOCUMENT:

R3.2

