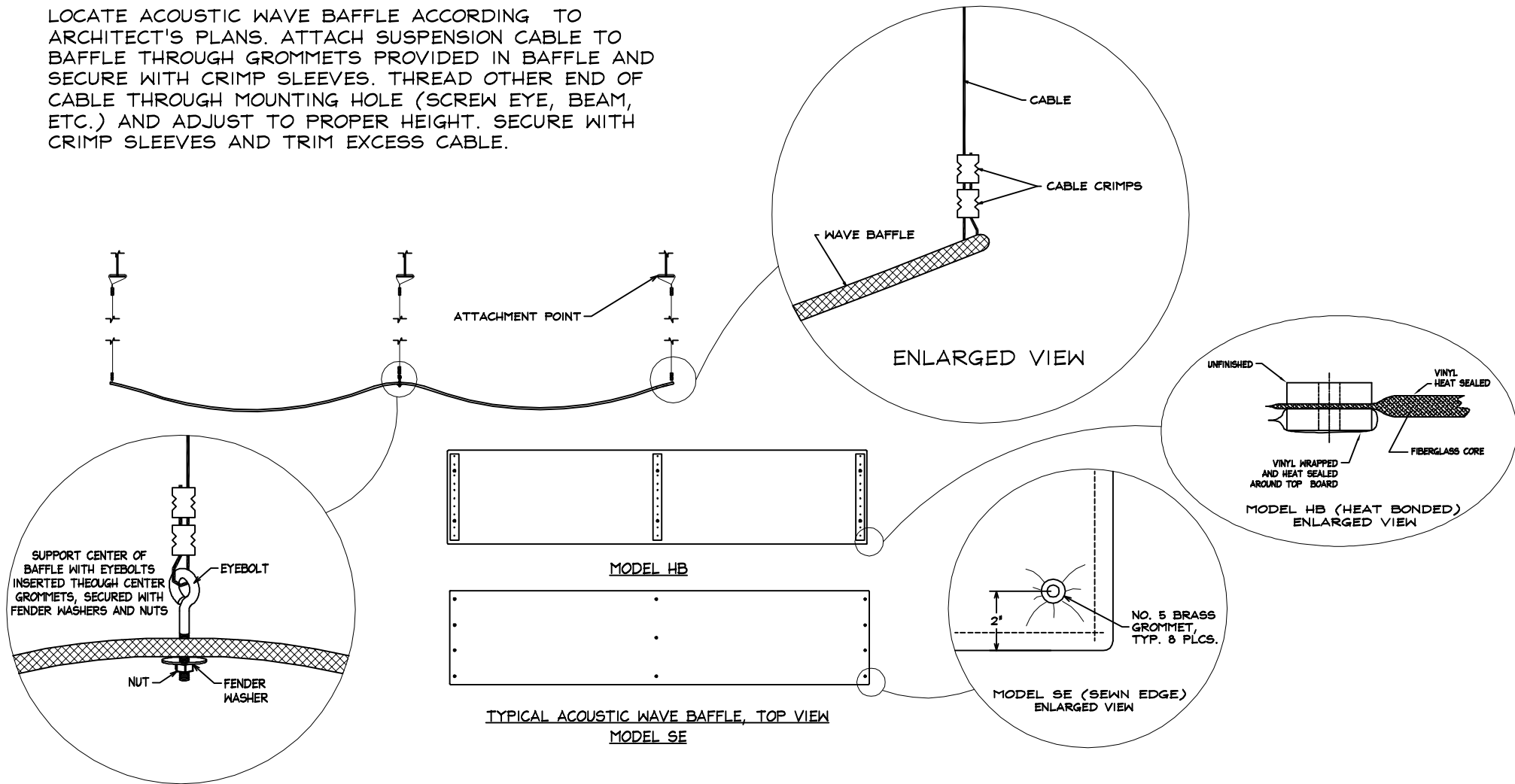


LOCATE ACOUSTIC WAVE BAFFLE ACCORDING TO ARCHITECT'S PLANS. ATTACH SUSPENSION CABLE TO BAFFLE THROUGH GROMMETS PROVIDED IN BAFFLE AND SECURE WITH CRIMP SLEEVES. THREAD OTHER END OF CABLE THROUGH MOUNTING HOLE (SCREW EYE, BEAM, ETC.) AND ADJUST TO PROPER HEIGHT. SECURE WITH CRIMP SLEEVES AND TRIM EXCESS CABLE.



TITLE INSTALLATION INSTRUCTIONS:
SUSPENDED
WAVE BAFFLE

LAST DATE
REVISED
4/27/09

DRAWN BY
JAA

DRAWING NO.
INSTAL39.DWG

T-DWG