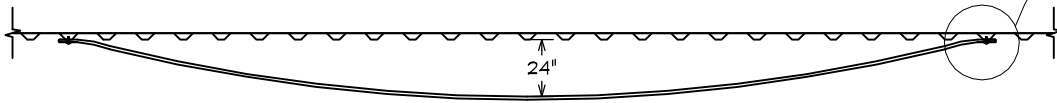
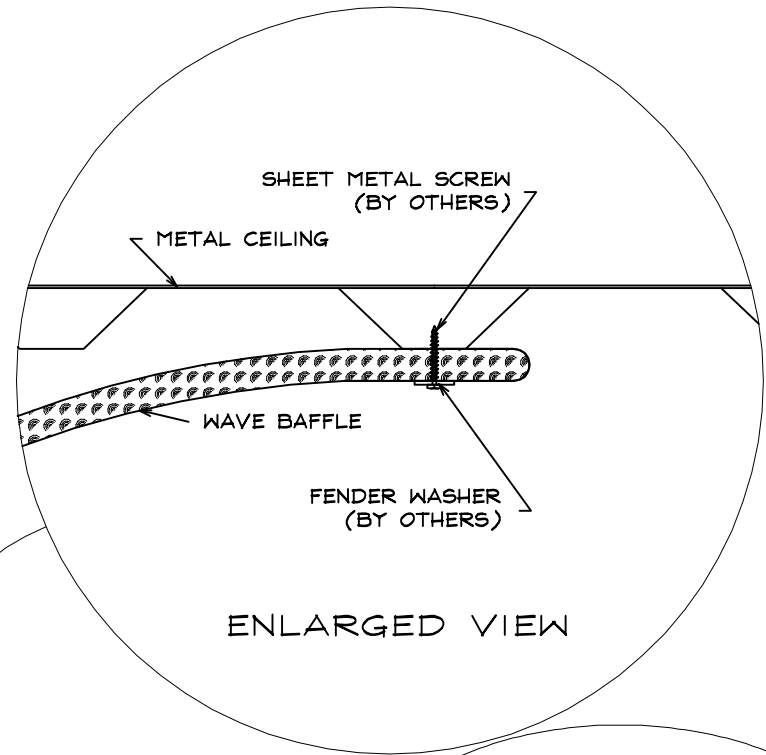
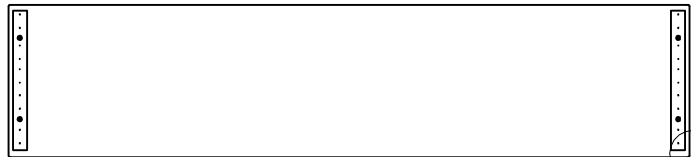


-LOCATE ACOUSTIC WAVE BAFFLE ACCORDING TO ARCHITECT'S PLANS. ATTACH BAFFLE TO METAL CEILING UTILIZING #10 SELF-TAPPING SHEET METAL SCREWS AND FENDER WASHERS (SUPPLIED BY OTHERS) THROUGH GROMMETS PROVIDED IN BAFFLE.

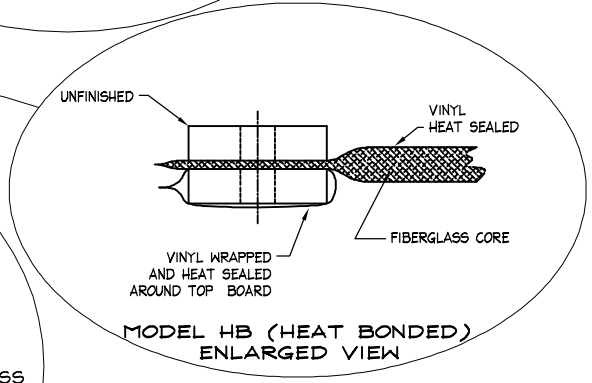
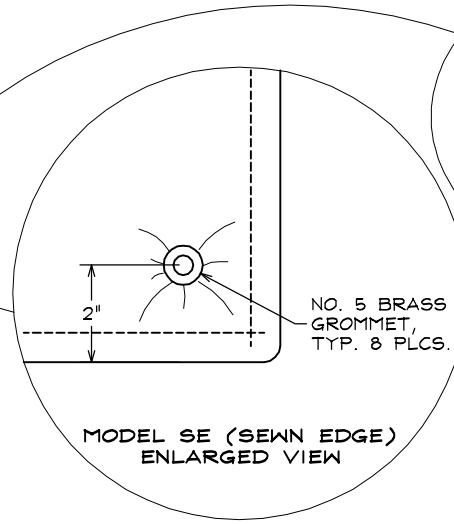
-ON A 30' LONG WAVE BAFFLE, ALLOW A MINIMUM OF 24" DROP AT CENTER OF BAFFLE. CONTACT FACTORY FOR OTHER MOUNTING RECOMMENDATIONS.



EXAMPLE OF 30' BAFFLE INSTALLATION



TYPICAL ACOUSTIC WAVE BAFFLE, TOP VIEW  
MODEL SE



TITLE INSTALLATION INSTRUCTIONS  
METAL CEILING  
WAVE BAFFLE

LAST DATE  
REVISED  
4/27/09

DRAWN BY  
JAA

DRAWING NO.  
INSTAL35.DWG

T-DWG