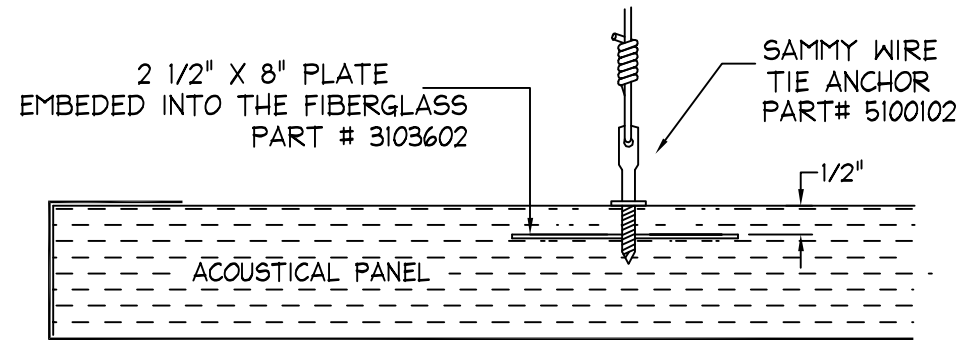
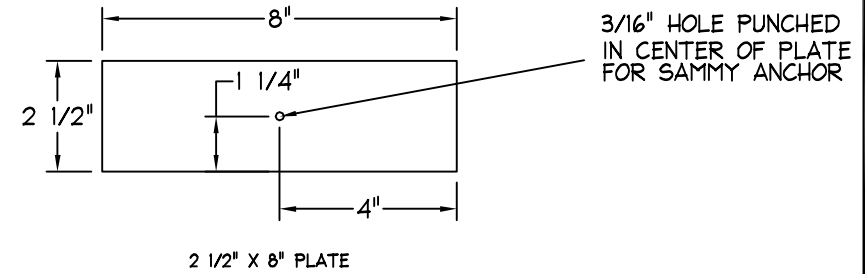
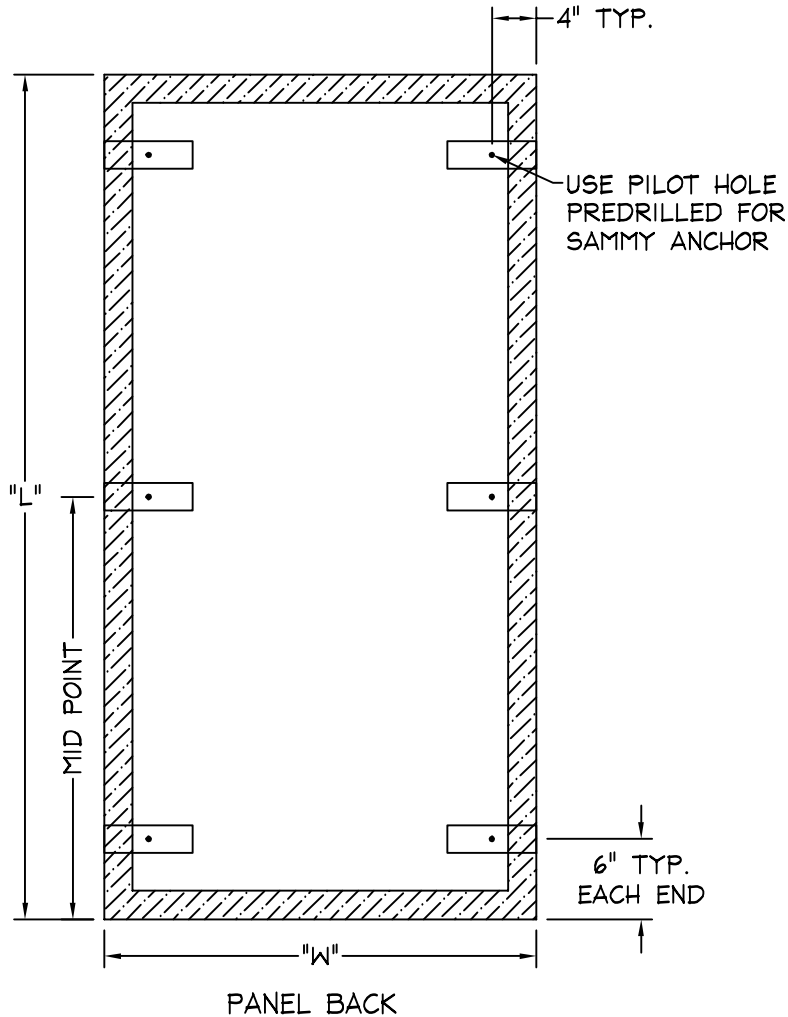


NOTES:

ALL SUPPORT LOCATIONS MUST BE USED TO HANG PANEL
 SAMMY ANCHORS AND DRIVER TOOL SUPPLIED BY KINETICS
 PANELS OVER 4' REQUIRE (6) PLATES
 PANELS 4' AND UNDER REQUIRE (4) PLATES



NUMBER OF PLATES
 DETERMINED BY PANEL SIZE



TITLE 2" HARDSIDE CLOUD
 PLATE LAYOUT

LAST DATE
 REVISED
 4/23/09

DRAWN BY
 JAA

DRAWING NO. T-DWG
 INSTAL28C