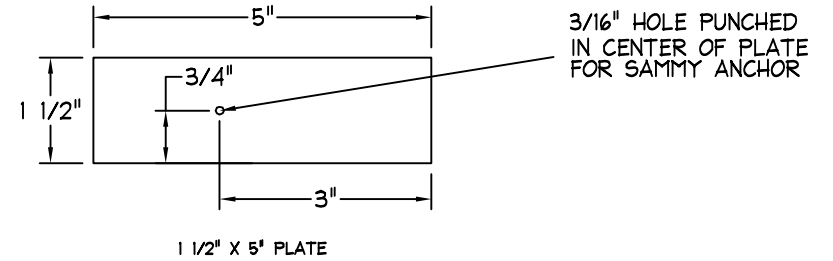
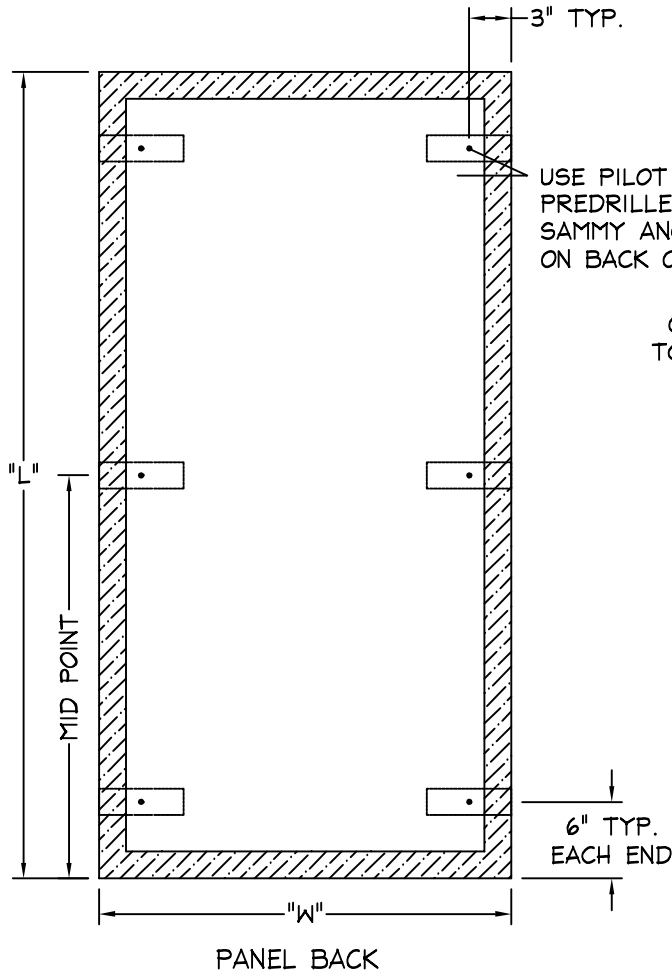


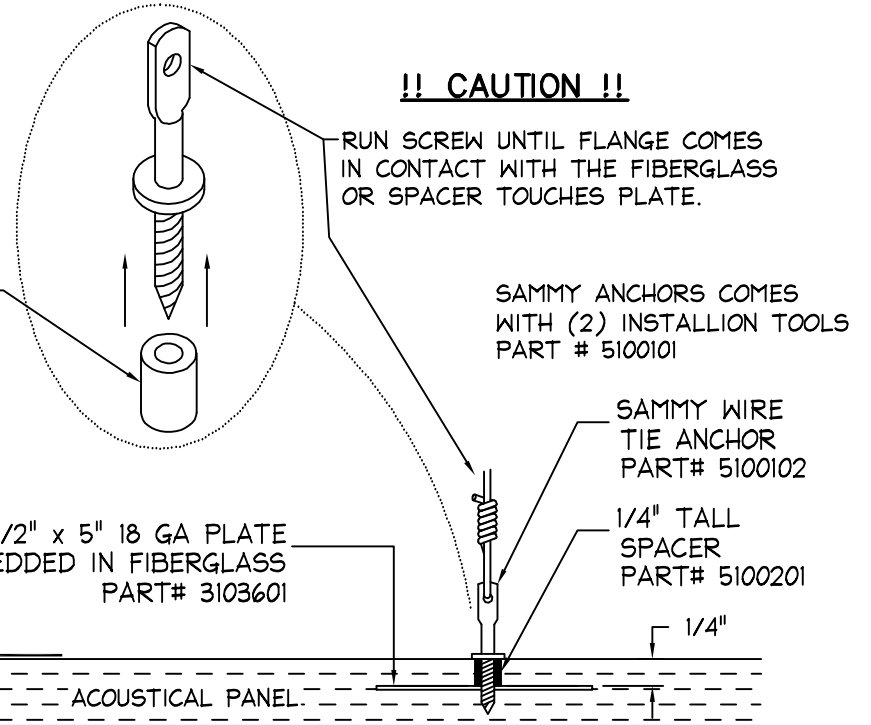
NOTES:

ALL SUPPORT LOCATIONS MUST BE USED TO HANG PANEL
 SAMMY ANCHORS AND DRIVER TOOL SUPPLIED BY KINETICS
 PANELS OVER 4' REQUIRE (6) PLATES
 PANELS 4' AND UNDER REQUIRE (4) PLATES



USE PILOT HOLE
 PREDRILLED FOR
 SAMMY ANCHOR MARKED
 ON BACK OF PANEL

PLACE 1/4" SPACER
 ON THE SAMMY ANCHOR
 TO PREVENT DAMAGE TO
 THE FACE OF PANEL



NUMBER OF PLATES
 DETERMINED BY PANEL SIZE



TITLE
 1" HARDSIDE CLOUD
 PLATE LAYOUT

LAST DATE
 REVISED
 4/23/09

DRAWN BY
 JAA

DRAWING NO.
 INSTAL28A

T-DWG