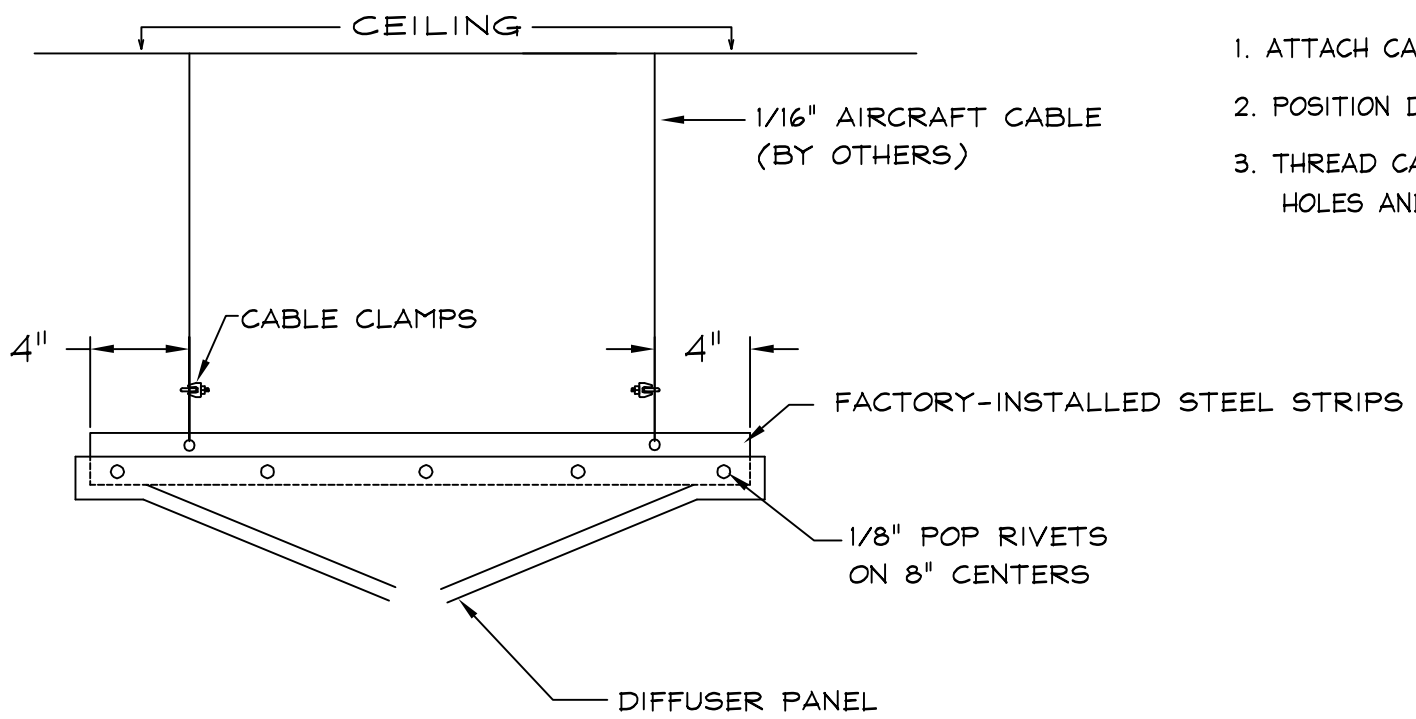


1 1/2" STEEL ANGLE FACTORY INSTALLED ALONG INSIDE OF DIFFUSER (4) TOTAL PER DIFFUSER.



1. ATTACH CABLE OR WIRE TO CEILING STRUCTURE
2. POSITION DIFFUSER IN DESIRED LOCATION
3. THREAD CABLE OR WIRE THROUGH SUSPENSION HOLES AND FASTEN TO ITSELF

CEILING SUSPENSION DETAIL FOR GEOMETRIC DIFFUSER



TITLE  
 CEILING-SUSPENDED GEOMETRIC DIFFUSER

LAST DATE REVISED  
 4/23/09

DRAWN BY  
 JAA

DRAWING NO.  
 INSTAL22.DWG

T-DWG