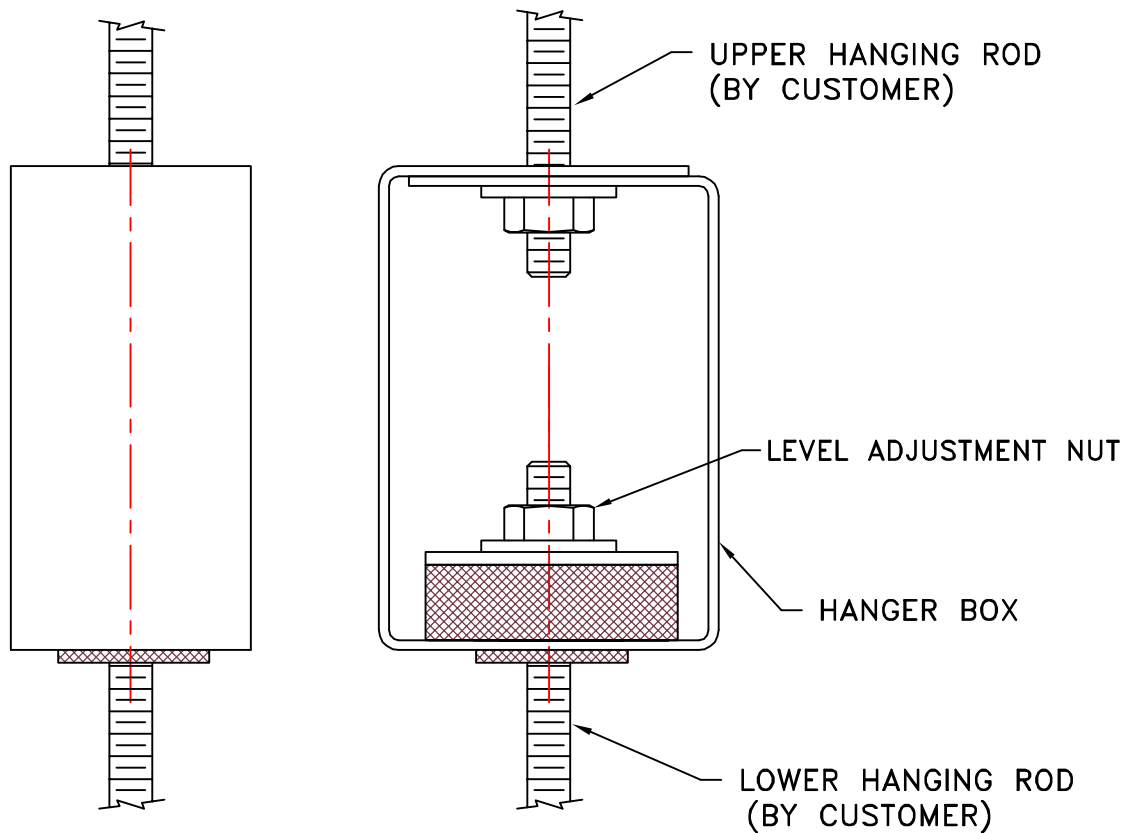


INSTALLATION INSTRUCTIONS FOR RH HANGER

1. LOCATE EACH HANGER INTO POSITION BASED ON SUBMITTAL DRAWING.
2. ATTACH HANGER BOX TO UPPER HANGING ROD AS SHOWN IN SKETCH.
3. ATTACH EQUIPMENT TO LOWER HANGING ROD AS SHOWN IN SKETCH.
4. IF NECESSARY, ADJUST EQUIPMENT LEVEL BY THE LEVEL ADJUSTMENT NUT ON THE TOP OF THE PAD AS SHOWN IN SKETCH.
5. CHECK TO ENSURE ADEQUATE ALIGNMENT BETWEEN THE LARGE HOLE IN THE HANGER BOX (AT THE BASE OF PAD) AND THE LOWER HANGING ROD.



NOTE:
APPEARANCE OF NEOPRENE PAD MAY VARY FROM
DRAWING AS SHOWN.