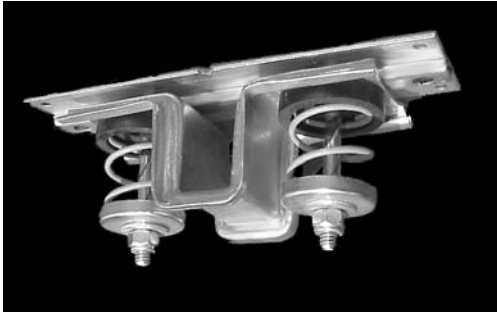


Super-Compact Ceiling Hanger

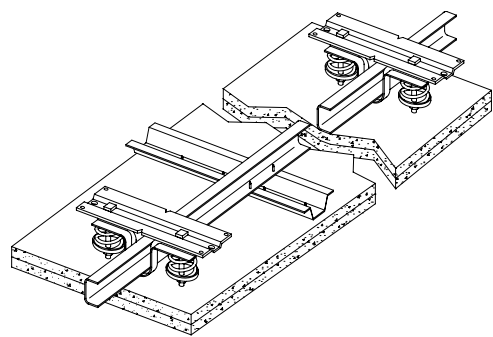
Model KSCH

Reg. U.S. Patent No. 7,028,432



Ceiling Isolation Theory:

Resiliently suspended ceiling systems are designed to minimize floor impact noise and airborne sound transmissions through the floor/ceiling structure. Creating airspace and resiliently decoupling the mass of the isolated ceiling from the non-isolated structure can effectively control noise transmission. Kinetics Noise Control ceiling isolation products use various types of resilient decouplers including springs, rubber or fiberglass pads, and combinations of pads and springs to improve Sound Transmission Class (STC) and Impact Insulation Class (IIC) values.



Application:

Low-profile isolated ceiling construction using a resilient hanger assembly to support one or more layers of gypsum board is desired by architects wanting to minimize ceiling drop in an occupied space. The Model KSCH Super-Compact Ceiling Hanger helps the designer achieve the goal of resiliently decoupling the ceiling using less than three and one half (3-1/2) inches of space. Model KSCH is designed to allow use of a single piece of 1-1/2" x 1/2" cold-rolled channel to support the drywall furring channel to which the gypsum board is attached. Renovation and new-build design ceiling height concerns are addressed easily with Model KSCH.

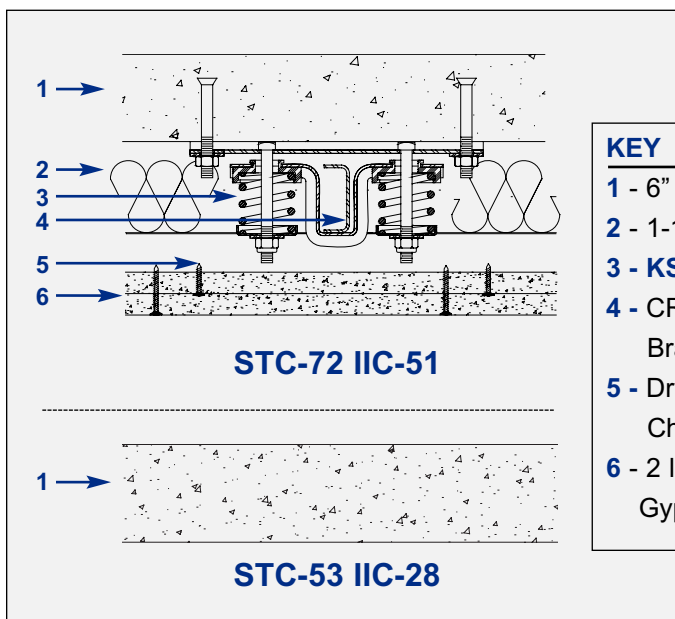
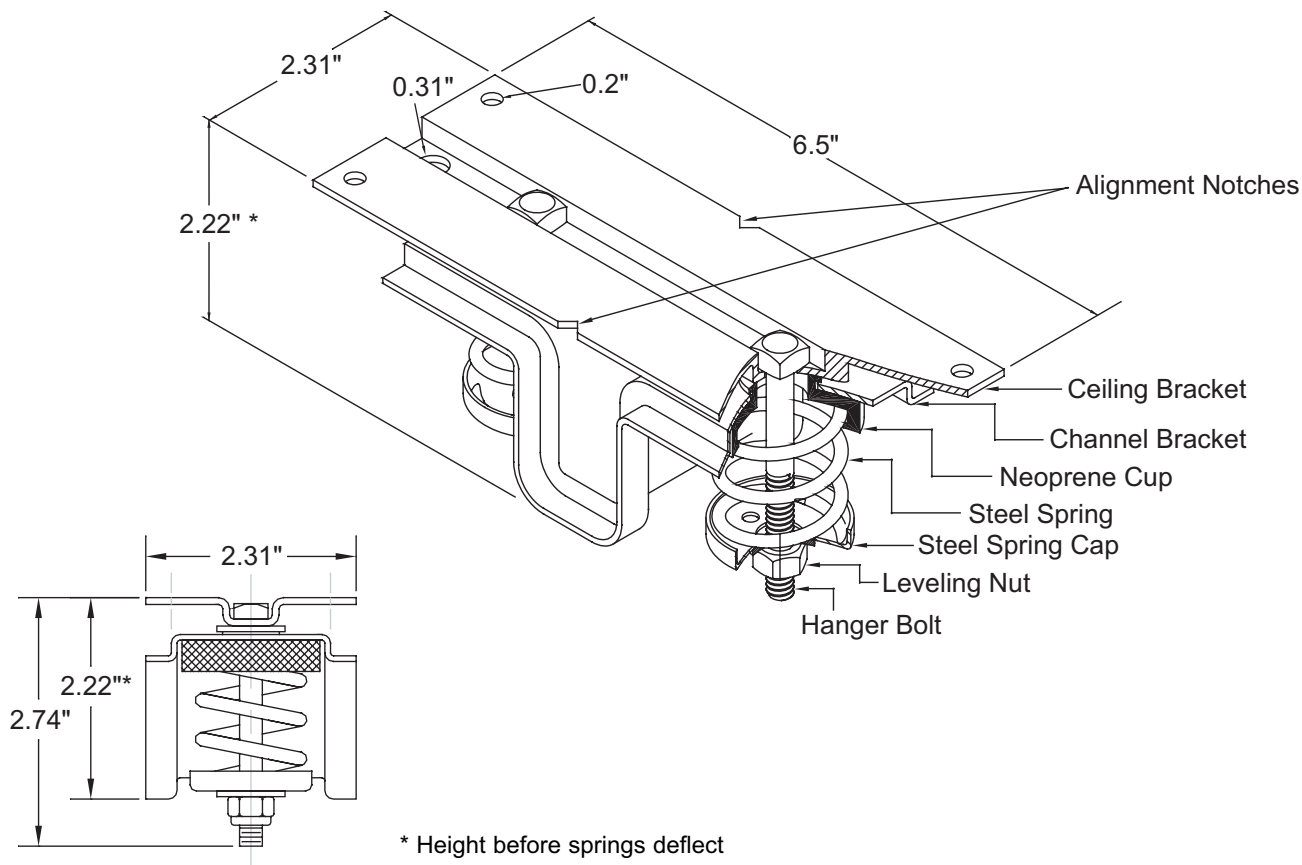
Benefits:

- Low 3-1/2" airspace using 7/8" drywall furring channel at 1/2" nominal spring deflection.
- Maximum natural frequency of 5.5 Hz under lightest typical load conditions.
- Requires only one (1) piece of 1-1/2" x 1/2" cold-rolled channel.
- Extended mounting bracket allows easy attachment to non-isolated deck.
- Centering notches for flawless alignment.
- Minimal vertical/lateral movement during a seismic event.
- STC 72, IIC 51 with two (2) layers gypsum board suspended under a 6" concrete slab (75 psf) with 1-1/2" fiberglass batt in airspace - 1/2" deflection springs.

Super-Compact Ceiling Hanger

Model KSCH

Patent No. 7,028,432 B2



KEY

- 1 - 6" Concrete Slab
- 2 - 1-1/2" Insulation
- 3 - KSCH Hanger
- 4 - CRC in Channel Bracket
- 5 - Drywall Furring Channel
- 6 - 2 layers 5/8" Gypsum Board



United States

6300 Irelan Place
P.O. Box 655
Dublin, Ohio 43017
Phone: 614-889-0480
Fax: 614-889-0540

Canada

1720 Meyerside Drive
Mississauga, Ontario
L5T 1A3
Phone: 905-670-4922
Fax: 905-670-1698

www.kineticsnoise.com
archsales@kineticsnoise.com

Kinetics Noise Control, Inc. is continually upgrading the quality of our products. We reserve the right to make changes to this and all products without notice.

Download Model KSCH information including three-part specification, installation guidelines, and typical installation drawings at www.kineticsnoise.com/arch/ksch. Call the factory at 800-959-1229 if needing additional information; ask for Architectural sales. Purchase Model KSCH and accessories through your local sales representative (www.kineticsnoise.com/replacement.asp).