

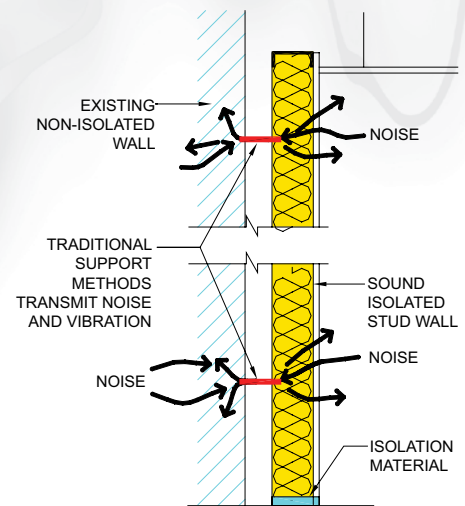
Isolated Wall Braces for Double Wall Assemblies

Unibrace-L and Model PSB

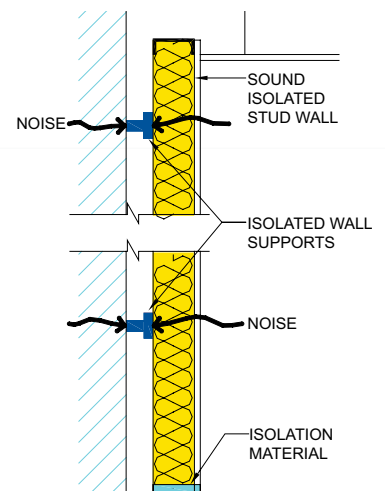
- Add structural integrity to isolated partition
- Ensure quiet space performs as designed
- Prevent wall buckling during seismic event

Sometimes overlooked in otherwise proper acoustic design, isolated wall braces play an important role in maintaining quiet spaces. Often used in conjunction with other noise control materials on the top and/or bottom of an isolated partition, these supports provide bracing for an isolated double-stud or masonry wall without creating a transmission path for noise and vibration.

Isolated wall braces should be employed whenever a secondary wall is used for improved sound control and rigid bracing will cause unwanted noise transfer. It is important to note that these devices do not add to the STC (Sound Transmission Class) rating of a partition, instead they provide structural stability without sacrificing acoustic performance.



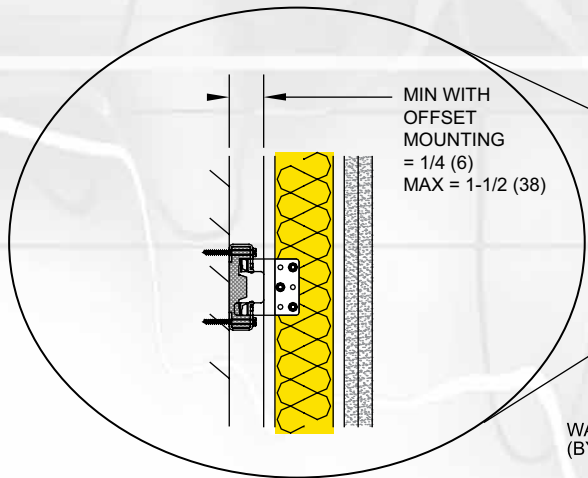
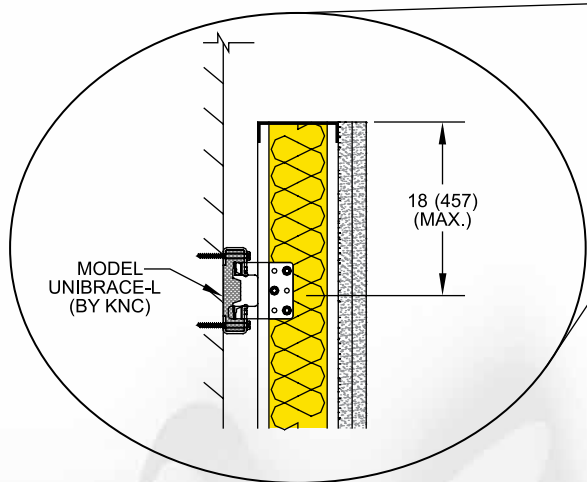
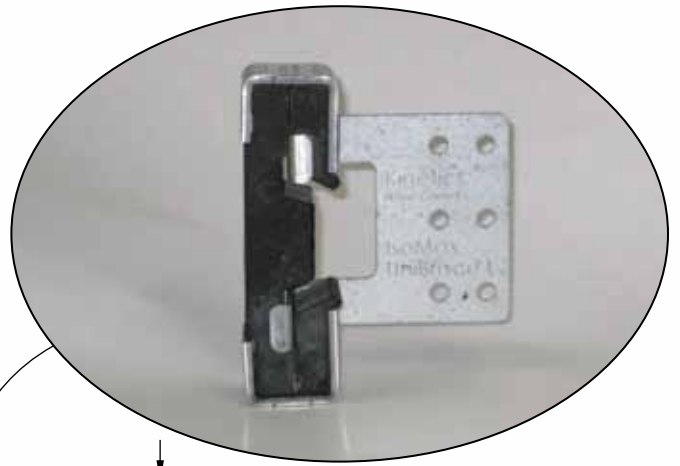
"THE PROBLEM"



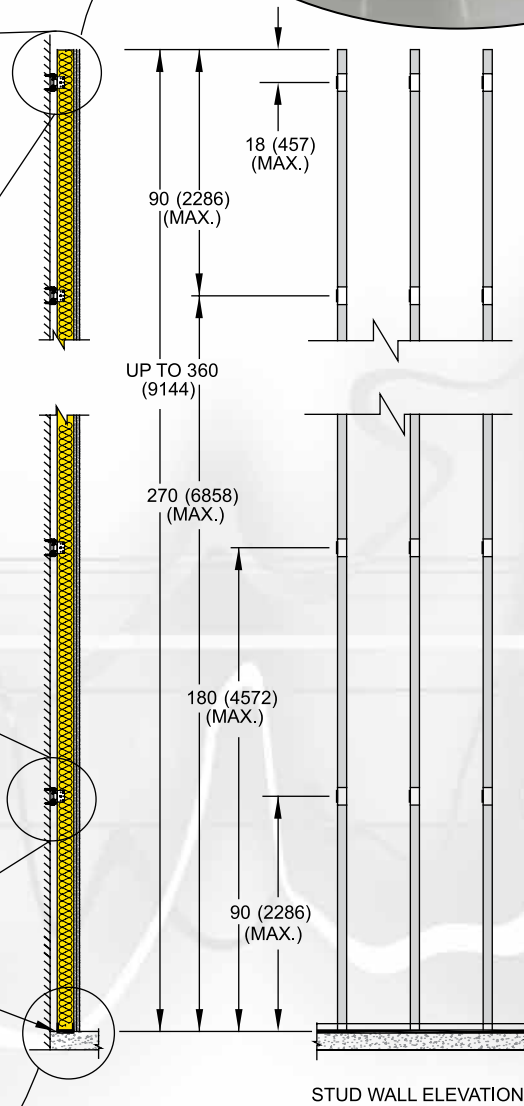
"THE SOLUTION"

IsoMax Mainstay Systems with Unibrace Bracket, Maximize Occupied Space

Below: Stud Layout with Unibrace-L



DIMENSION FORMAT: IN (mm)

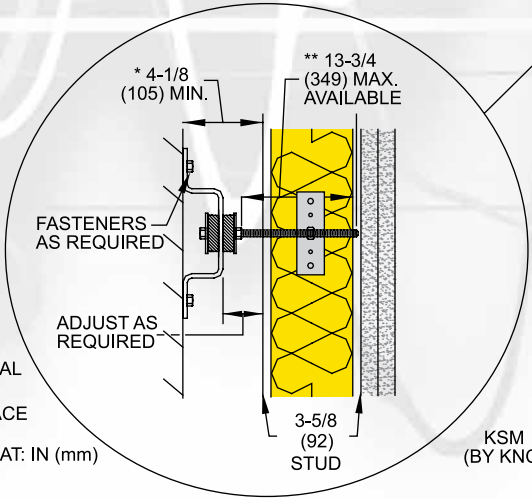
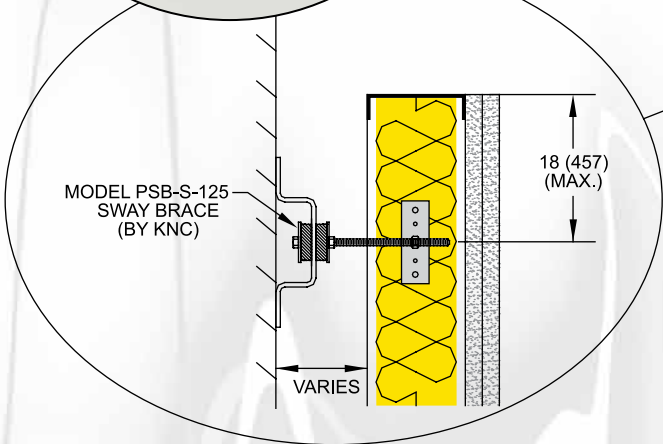
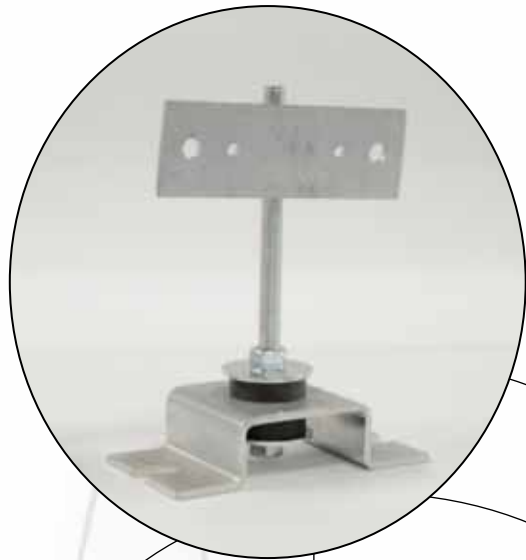


Wallmat Top and Bottom Wall Isolation

- Continuous resilient support of the partition
- Use Model KAI isolation bushing assemblies for 100% resilient separation
- Use for both top and bottom plate installation

Model PSB-S Large Airspace and Stud Wall Support

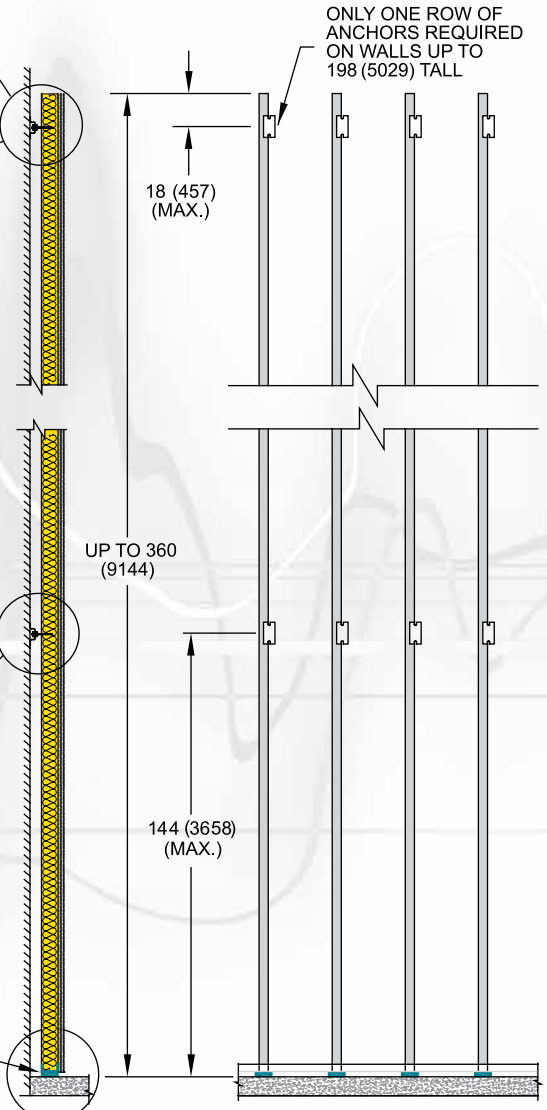
Below: Steel or Wood Stud Layout with PSB-S



* MINIMUM AIR SPACE WITH STANDARD BOLT (SHORTER BOLT AVAILABLE)

** ORDER OPTIONAL LONG BOLT FOR MAXIMUM AIR SPACE

DIMENSION FORMAT: IN (mm)



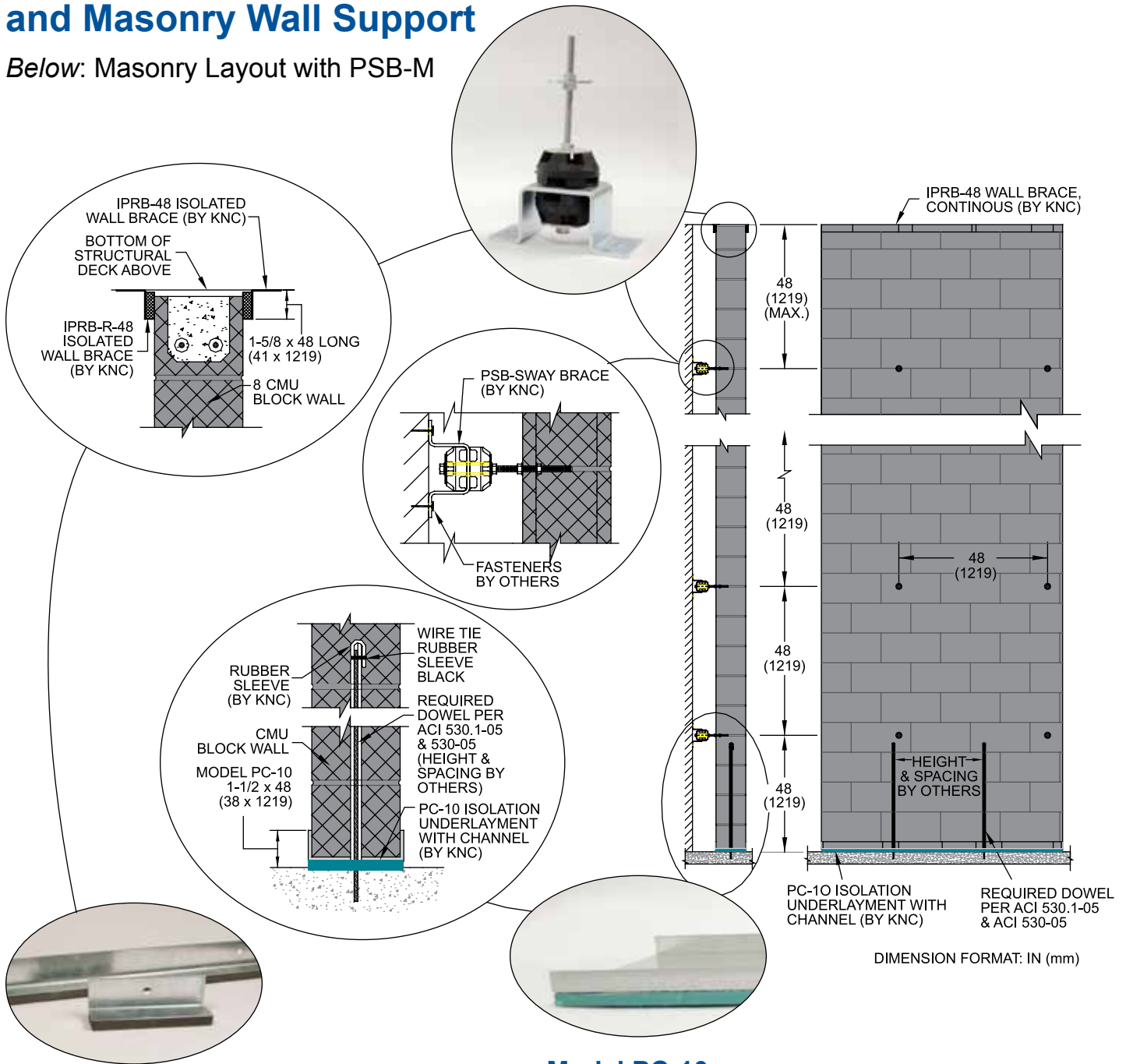
Model KSM Bottom Wall Isolation

- Includes Isolated Anchor
- Can be used in potentially wet areas
- 16" typical spacing



Model PSB-M Large Airspace and Masonry Wall Support

Below: Masonry Layout with PSB-M



Model IPRB

- Flexible Design- works for masonry or studwalls.
- Easy to Install
- Can be “reversed” for tight spaces

Model PC-10

- Easy to install pre-cut strips
- Continuous resilient support of the partition
- Engineered for a wide range of masonry loads
- Steel channel guides CMU installation

Kinetics Noise Control, Inc.

United States
6300 Irelan Place
Dublin, Ohio, 43017
Phone: 614-889-0480
Fax: 614-614-889-0540

Canada
3570 Nashua Drive
Mississauga, Ontario, L4V1L2
Phone: 905-670-4922
Fax: 905-670-1698

Kinetics Noise Control, Inc. is continually upgrading the quality of our products. We reserve the right to make changes to this and all products without notice.

Download isolated wall support products installation guidelines, three-part specification, and more at www.kineticsnoise.com/arch/walls. Call the factory at 800-959-1229 if needing additional information; ask for Architectural sales. Purchase through your local sales representative (www.kineticsnoise.com/replacement.asp).

www.kineticsnoise.com/arch/walls/
archsales@kineticsnoise.com