

# Wood-Framed Ceiling Hanger

Model ICW



## Application

---

Secured to wood-frame construction (e.g., joists, trusses), Model ICW incorporates a one-inch (1") rated deflection spring in series with a neoprene cup to resiliently support one or more layers of gypsum board. The unique design of the Model ICW bracket allows the isolator to be installed on the joists to optimize ceiling height. A channel clip leveling rod assembly is designed to carry a single piece of 1-1/2" x 1/2" 16-gage steel carrying channel. Drywall furring channel is attached to the carrying channel. The system provides the installer with a means for leveling the isolated ceiling framing. Conventional gypsum board attachment thanks to a preload spacer that holds the isolator rigid until the weight of the gypsum board compresses the spring. Incorporate Model ICW into any isolated ceiling design where one-inch (1") rated spring deflection and minimal reduction in ceiling height are needed for superior performance coupled with low-profile design.

## Benefits

---

- Maximum natural frequency of 4.4 Hz under lightest typical load conditions.
- STC 76, IIC 62 with Model ICW attached to 2" x 10" joists and suspending two (2) layers of gypsum board with 3-1/2" fiberglass batt in airspace.
- Multiple features incorporated into the design ensure inexpensive installation.
- Spring/neoprene cup combination improves performance against low-frequency noise.
- Actual installed load can vary between 75% and 150% of rated load without significant impact to ceiling performance.

## UL Fire Rated Assemblies

---

### Design No. L521

Floor/Ceiling Assembly using parallel chord wood trusses. See Item 6C in listing.

### Design No. L581

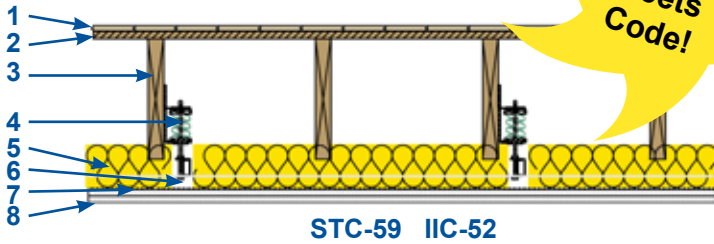
Floor/Ceiling Assembly using various structural wood and wood/steel members. See Item 6 in listing. Design L581 allows for substitutions of many joist types. See the complete certification of details.

### Design No. P522

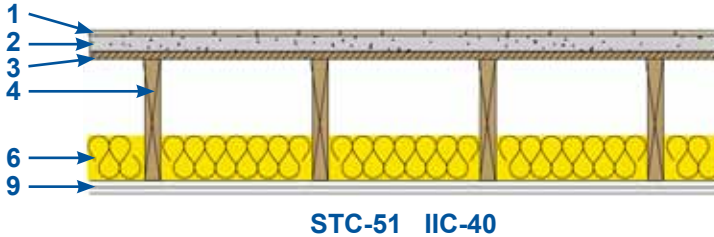
Roof/Ceiling Assembly using either pitched or parallel chord wood trusses. See Item 6B in listing.

# STC/IIC Sound Test Data

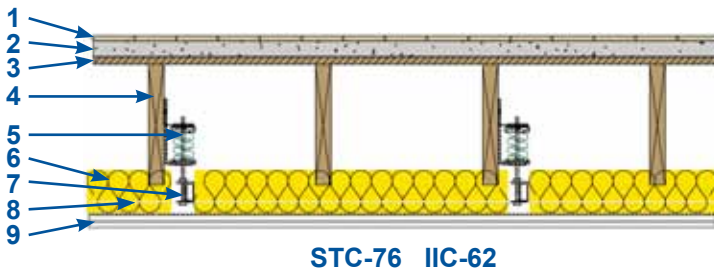
Meets Code!



- 1 - Wood Floor
- 2 - 3/8" Plywood
- 3 - 2"x10" Joists
- 4 - ICW Isolation Hanger
- 5 - 3-1/2" Fiberglass Insulation
- 6 - CRC in Channel Clip
- 7 - Drywall Furring Channel
- 8 - 2 Layers 5/8" Gypsum Board

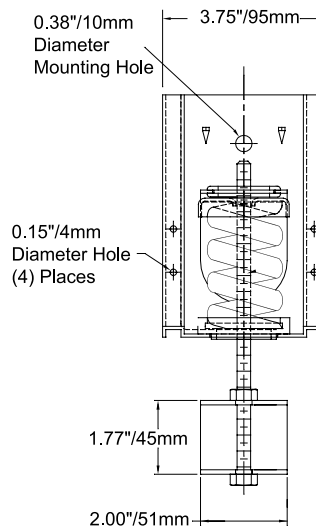
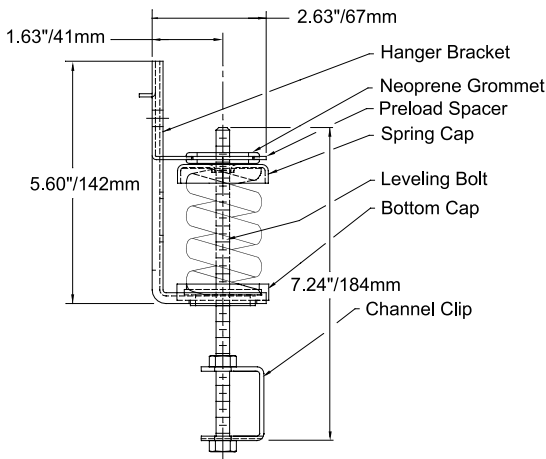


- 1 - Parquet Floor
- 2 - 1-1/2" Concrete
- 3 - 5/8" Plywood
- 4 - 2"x10" Joists
- 5 - ICW Isolation Hanger
- 6 - 3-1/2" Fiberglass Insulation
- 7 - CRC in Channel Clip
- 8 - Drywall Furring Channel
- 9 - 2 Layers 5/8" Gypsum Board



Visit [www.kineticsnoise.com/arch/tests/icw.aspx](http://www.kineticsnoise.com/arch/tests/icw.aspx) for complete Model ICW STC/IIC Sound test data

## Product Details



### Kinetics Noise Control, Inc.

**United States**  
6300 Irelan Place  
Dublin, Ohio, 43017  
Phone: 614-889-0480  
Fax: 614-614-889-0540

**Canada**  
3570 Nashua Drive  
Mississauga, Ontario, L4V1L2  
Phone: 905-670-4922  
Fax: 905-670-1698

Kinetics Noise Control, Inc. is continually upgrading the quality of our products. We reserve the right to make changes to this and all products without notice.

Download Model ICW installation guidelines, three-part specification, and more at [www.kineticsnoise.com/arch/icw.aspx](http://www.kineticsnoise.com/arch/icw.aspx). Call the factory at 800-959-1229 if needing additional information; ask for Architectural sales. Purchase Model ICW and accessories through your local sales representative ([www.kineticsnoise.com/relocation.asp](http://www.kineticsnoise.com/relocation.asp)).

[www.kineticsnoise.com/arch/icw.aspx](http://www.kineticsnoise.com/arch/icw.aspx)  
archsales@kineticsnoise.com