

## Deck-Suspended Ceiling Hanger

Model ICC



### Benefits:

- Maximum natural frequency of 4.4 Hz under lightest typical load conditions.
- STC 84, IIC 70 with two (2) layers of gypsum board suspended under a 6-inch concrete slab (75 psf) with 3-1/2" fiberglass batt in airspace.
- Multiple features incorporated into the design ensure inexpensive installation.
- Spring/neoprene cup combination improves performance against low-frequency noise.
- Actual installed load can vary between 75% and 150% of rated load without significant impact to ceiling performance.

### Application:

Secured to concrete, metal deck, or structural framing, Model ICC incorporates a one-inch (1") rated deflection spring in series with a neoprene cup to resiliently support one or more layers of gypsum board. Attachment can be direct to concrete or metal deck, or it can be suspended from threaded rod that is properly anchored. A channel clip/leveling rod assembly is designed to carry a single piece of 1-1/2" x 1/2" 16-gage steel carrying channel. Drywall furring channel is attached to the carrying channel. The system provides the installer with a means for leveling the isolated ceiling framing. Gypsum board attaches quickly and easily thanks to a preload spacer that holds the isolator rigid until the weight of the gypsum board compresses the spring. Incorporate Model ICC into any isolated ceiling design where one-inch (1") rated spring deflection and a ten-inch (10") airspace are needed for superior performance.

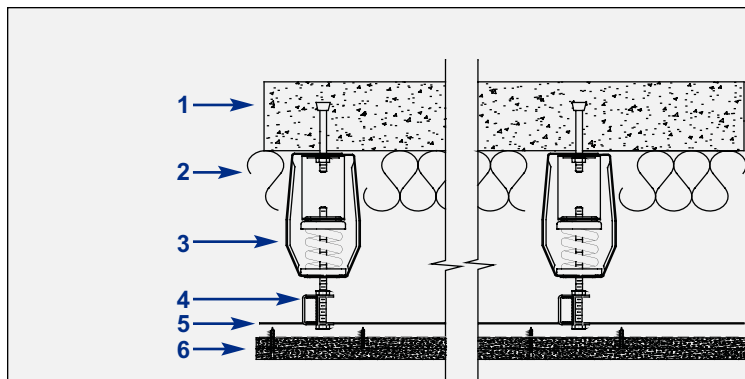
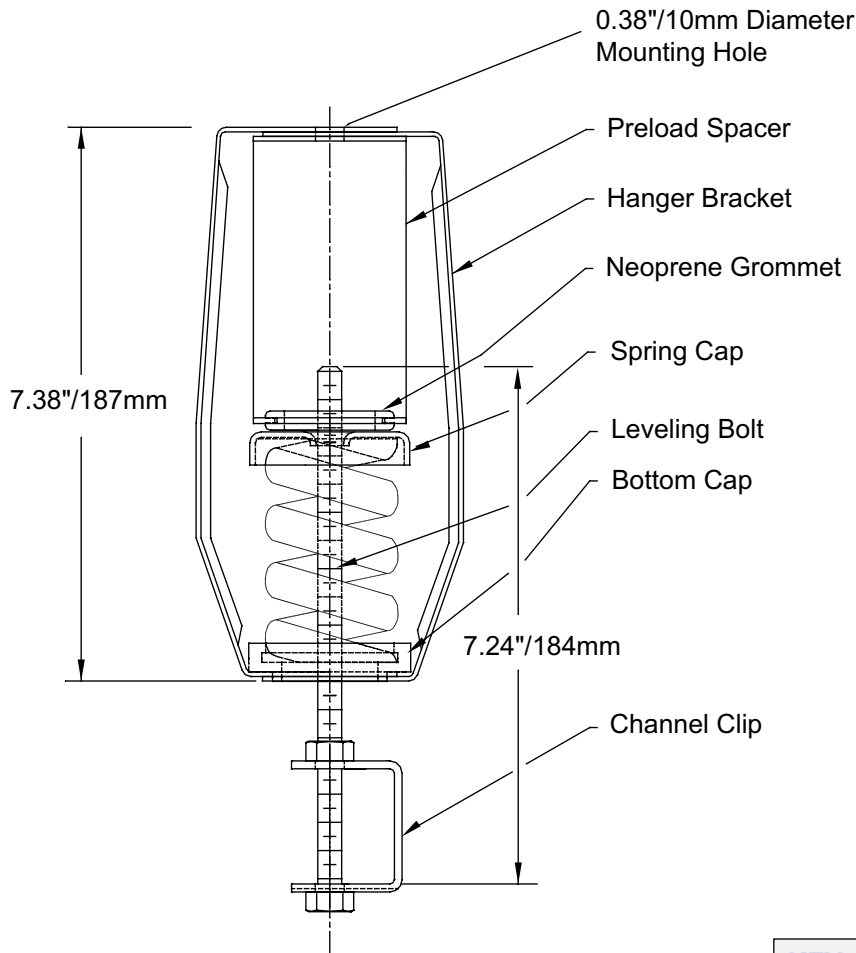
### Ceiling Isolation Theory:

Resiliently suspended ceiling systems are designed to minimize floor impact noise and airborne sound transmissions through the floor/ceiling structure. Creating airspace and resiliently decoupling the mass of the isolated ceiling from the non-isolated structure can effectively control noise transmission. Kinetics Noise Control ceiling isolation products use various types of resilient decouplers including springs, rubber or fiberglass pads, and combinations of pads and springs to improve Sound Transmission Class (STC) and Impact Insulation Class (IIC) values.

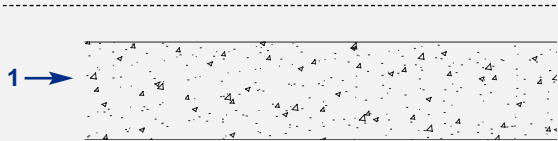


# Deck-Suspended Ceiling Hanger

Model ICC



**STC-84 IIC-70**



**STC-53 IIC-28**

## KEY

- 1 - 6" Concrete Slab
- 2 - 3-1/2" Insulation
- 3 - ICC Hanger
- 4 - CRC in Channel Clip
- 5 - Drywall Furring Channel
- 6 - 2 layers 5/8" Gypsum Board



### United States

6300 Irelan Place  
P.O. Box 655  
Dublin, Ohio 43017  
Phone: 614-889-0480  
Fax: 614-889-0540

### Canada

3570 Nashua Dr.  
Mississauga, Ontario  
L4V 1L2  
Phone: 905-670-4922  
Fax: 905-670-1698

[www.kineticsnoise.com](http://www.kineticsnoise.com)  
[archsales@kineticsnoise.com](mailto:archsales@kineticsnoise.com)

Kinetics Noise Control, Inc. is continually upgrading the quality of our products. We reserve the right to make changes to this and all products without notice.

Download Model ICC information including three-part specification, installation guidelines, and typical installation drawings at [www.kineticsnoise.com/icc.aspx](http://www.kineticsnoise.com/icc.aspx). Call the factory at 800-959-1229 if needing additional information; ask for Architectural sales. Purchase Model ICC and accessories through your local sales representative ([www.kineticsnoise.com/replacement.asp](http://www.kineticsnoise.com/replacement.asp)).