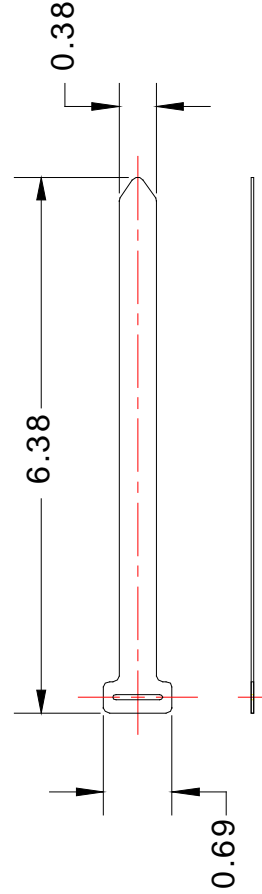


KCHB BRACE ANGLE
 EACH KIT CONTAINS (1)
 PER MODEL DESCRIPTION
 IN TABLE AT THE RIGHT.

MODEL	PIPE SIZE	A (in.)	L (in.)	ØD min. (in.)	ØD max. (in.)
KCHB-01	1-1/2"	0.50	1.88	0.25	0.38
KCHB-02	2"	0.50	2.38	0.25	0.38
KCHB-03	2-1/2"	0.50	2.88	0.25	0.38
KCHB-04	3"	0.50	3.50	0.25	0.38
KCHB-05	3-1/2"	0.50	4.00	0.25	0.38
KCHB-06	4"	0.75	4.50	0.50	0.75
KCHB-07	5"	0.75	5.56	0.50	0.75
KCHB-08	6"	0.75	6.63	0.50	0.75
KCHB-09	8"	0.75	8.63	0.50	0.75
KCHB-10	10"	0.75	10.75	0.50	0.75
KCHB-11	12"	0.75	12.75	0.50	0.75
KCHB-12	14"	1.00	14.00	0.88	1.25
KCHB-13	16"	1.00	16.00	0.88	1.25
KCHB-14	18"	1.00	18.00	0.88	1.25
KCHB-15	20"	1.00	20.00	0.88	1.25
KCHB-16	24"	1.00	24.00	0.88	1.25
KCHB-17	30"	1.00	30.00	0.88	1.25



KCHB BRACE ANGLE STRAP

EACH KIT CONTAINS (2).

KINETICS™ Seismic Design Manual

KCHB CLEVIS HANGER BRACE

DRAWING # S-90.600-1A

RELEASE DATE: 12/19/03

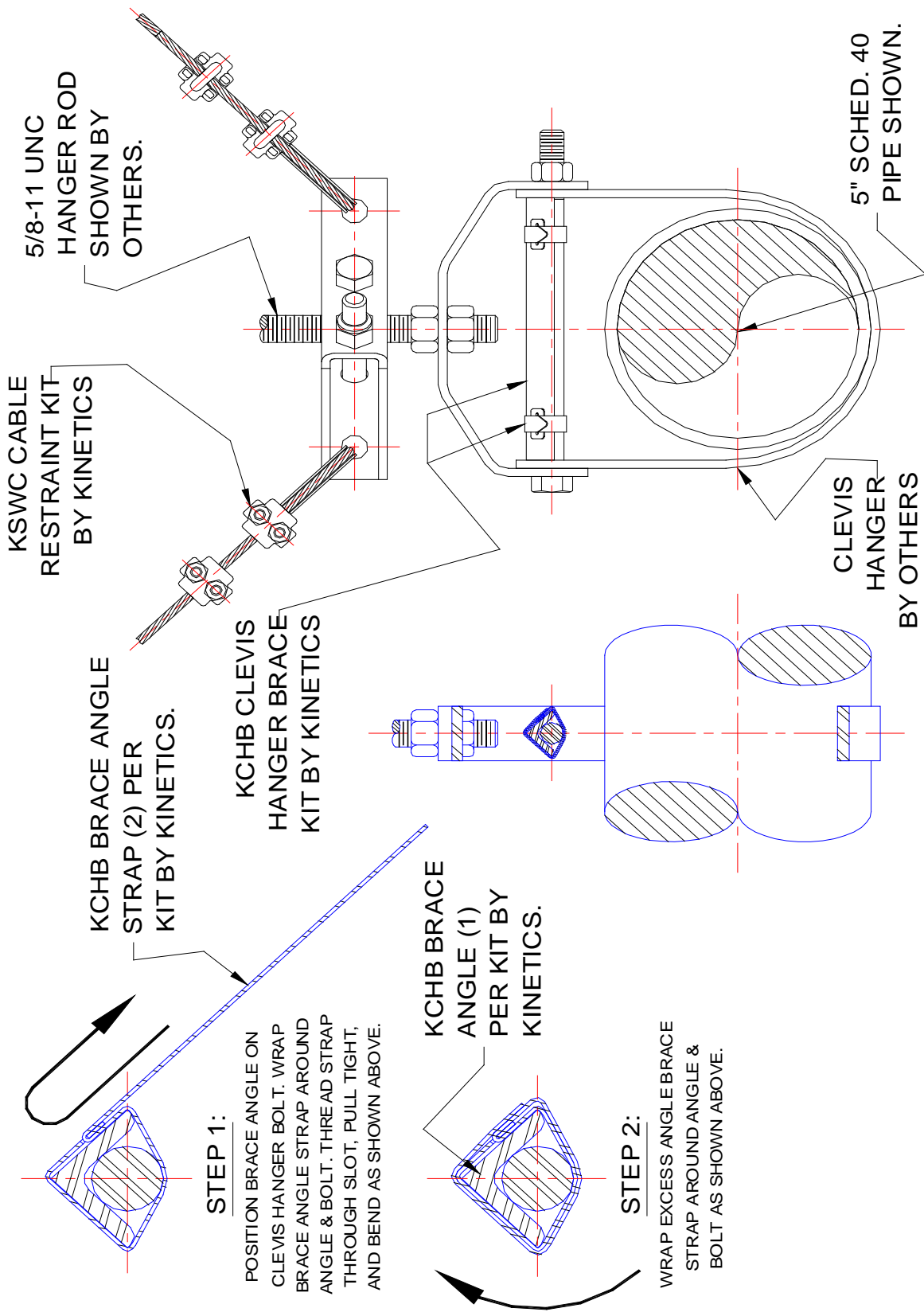
KINETICS
 Noise Control

DUBLIN, OHIO, USA • MISSISSAUGA, ONTARIO, CANADA

Toll Free (USA only): 800-959-1229
 International: 614-889-0480
 Fax: 614-889-0540
 World Wide Web: www.kineticsnoise.com
 Email: sales@kineticsnoise.com

DOCUMENT:
P8.2.3-1

VISCMA
 MEMBER



KCHB CLEVIS HANGER BRACE

DRAWING # S-90.600-1B

RELEASE DATE: 12/19/03



DUBLIN, OHIO, USA • MISSISSAUGA, ONTARIO, CANADA

Toll Free (USA only): 800-959-1229
 International: 614-889-0480
 Fax: 614-889-0540
 World Wide Web: www.kineticsnoise.com
 Email: sales@kineticsnoise.com

DOCUMENT:
P8.2.3-2
 VISCMA MEMBER