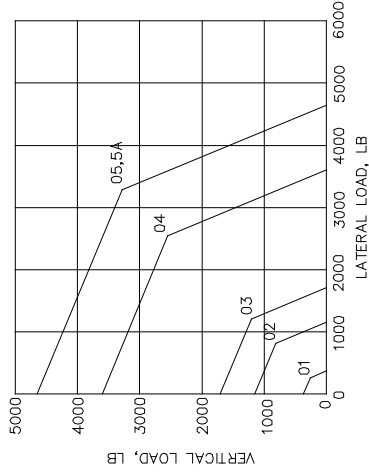
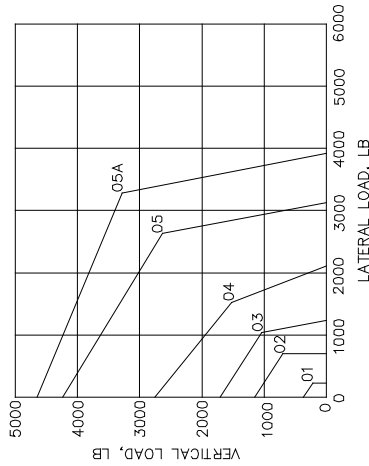


ITEM	LISTED CAPACITY	NO. OF ANC'S	A	B	C	D	E	F	G	H	J	K	L	M	N	EMBED.
01	250	2	6.00	6.00	1.50	4.00	1.00	2.00	0.50	0.50	0.38	3.00	0.38	6.00	3.00	2.5
02	650	2	7.00	6.00	1.50	5.00	1.00	2.50	0.75	0.50	0.50	3.00	0.38	6.00	3.00	3.5
03	1125	2	9.00	6.00	1.75	7.00	1.00	3.50	0.88	0.50	0.63	3.50	0.50	6.00	3.00	4.0
04	2075	2	11.50	6.00	2.00	9.50	1.00	4.75	1.25	0.50	0.88	4.00	0.50	6.00	3.00	4.75
05	3275	2	15.00	8.00	2.00	12.00	1.50	6.00	1.25	0.50	1.00	4.25	0.50	6.00	3.00	6.0
05A	3275	2	15.00	8.00	2.00	12.00	1.50	6.00	1.25	0.50	1.00	4.25	0.50	6.00	3.00	9.0

HS-5 LOAD CAPACITY IN POUNDS



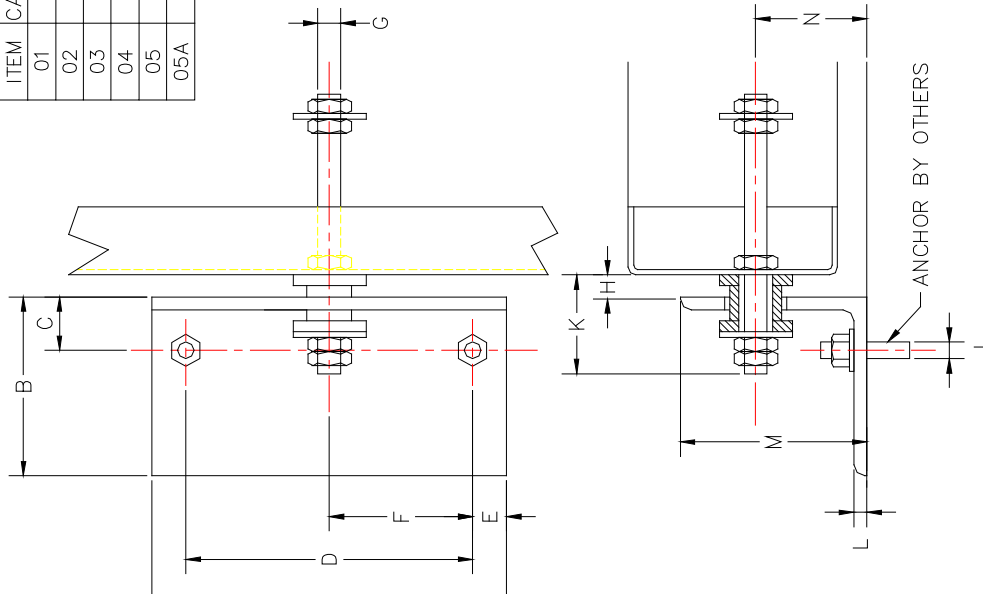
ANCHORED TO CONCRETE BOLTED OR WELDED TO STEEL

OPERATING CLEARANCE FOR THE HS-5 SNUBBER IS APPROX. 0.25 IN ALL DIRECTIONS.

KINETICS HS-5 SNUBBER LISTED CAPACITIES ARE BASED ON EQUAL SIMULTANEOUSLY APPLIED VERTICAL AND HORIZONTAL LOADS. HORIZONTAL LOADS CAN BE APPLIED ON EITHER AXIS.

CAPACITIES FOR INDIVIDUALLY APPLIED LOADS ARE HIGHER, CONSULT KINETICS FOR DETAILS.

CAPACITIES ASSUME THE USE OF THE INDICATED ANCHORS EMBEDDED THEIR APPROVED EMBEDMENT DEPTH IN 3000 PSI CONCRETE. (NO SPECIAL INSPECTION IS REQUIRED.)



**HS-5 SEISMIC SNUBBER**

DRAWING # S-04.80-1A

RELEASE DATE: 12/19/03

**KINETICS**  
Noise Control

DUBLIN, OHIO, USA • MISSISSAUGA, ONTARIO, CANADA

Toll Free (USA only): 800-959-1229  
 International: 614-889-0480  
 Fax: 614-889-0540  
 World Wide Web: www.kineticsnoise.com  
 Email: sales@kineticsnoise.com

DOCUMENT:  
**P5.2.2**

VISCMA  
MEMBER